

# Metro Studio Theatre

## Visual Story



This venue guide is to help you prepare for your visit to the Metro Studio Theatre. It provides information about the theatre's location, a visual guide to the space, COVID-19 procedures and what you can expect to see at a Fringe 2021 show.

### **Victoria Fringe Festival**

August 11, 2021 – September 24, 2021

1411 Quadra St, Victoria, BC V8W 2L2

## About the Metro Studio Theatre

The Metro Studio Theatre is located in downtown Victoria, BC on the traditional and unceded territory of the Lekwungen people. Intrepid Theatre runs the Metro Studio, and throughout the year, we use it for our three festivals: OUTstages, UNO Fest, and the Victoria Fringe Festival.

## About the Victoria Fringe Festival

This visual story is intended for the 2021 Victoria Fringe Festival, a festival of independent theatre where shows are chosen by lottery. Learn more about the festival at [victoriafringe.com](https://victoriafringe.com).

This is the logo for the Victoria Fringe:

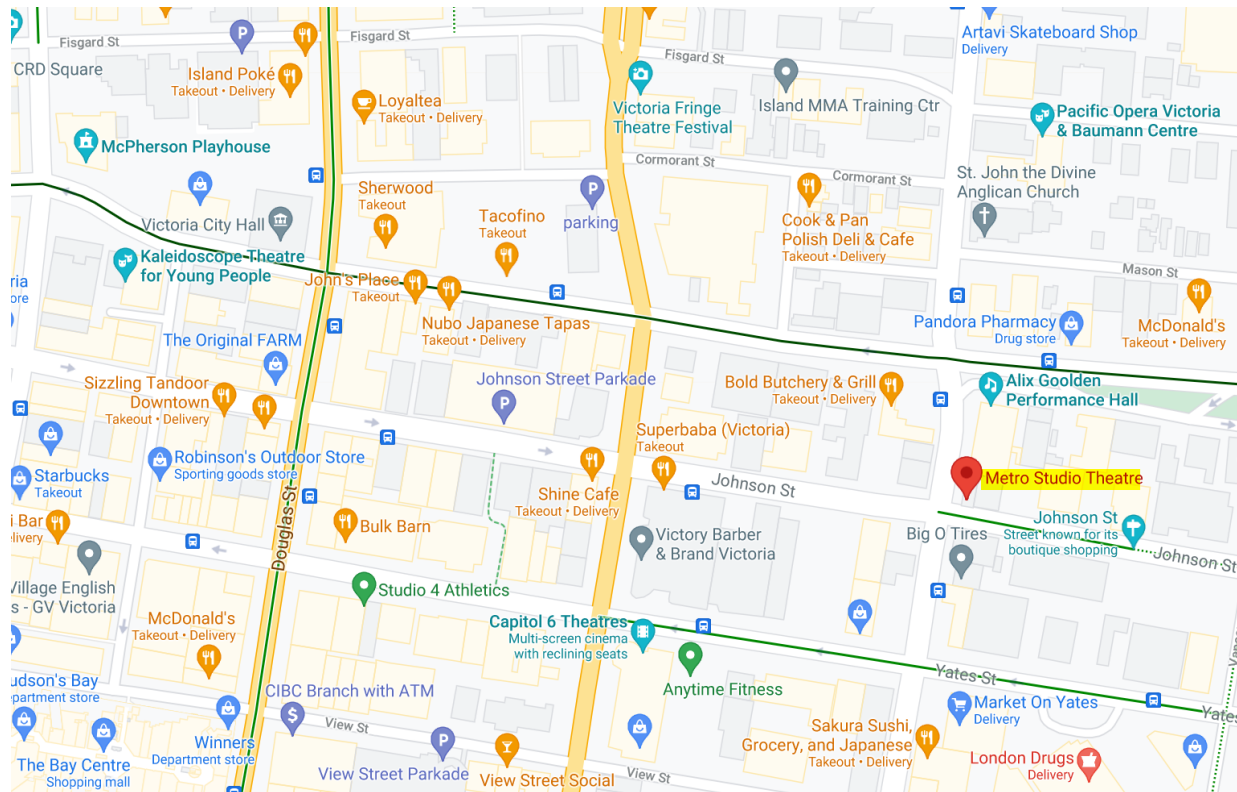


And this is what the festival poster looks like:



## Location

The Metro Studio is at 1411 Quadra Street, Victoria, BC (V8W 2L2). It is at the corner of Quadra and Johnson Street. The Metro Studio is attached to the Victoria Conservatory of Music (VCM).



[View on Google Maps](#)

## Parking

There is no designated parking for the Metro. (The gated parking lot behind the Metro is reserved for the Victoria Conservatory of Music.) There is street parking along Johnson Street, which is free after 6pm. The nearest parkade is the Johnson St. Parkade (entrance at 750 Johnson St.). The picture below is taken from across the street, at the corner of Quadra and Johnson.







## Transit

There are several bus routes which stop nearby to the Metro Studio:

- The #6 along Quadra street.
- The #2, 24, 25, 27, 28 along Johnson St. (Johnson is a one-way street going away from downtown. In the opposite direction, these routes run on Yates or Pandora.)

Many other routes also stop within walking distance of the Metro along Pandora, Yates, Fort and Douglas Streets.



## Cycling

There are protected bike lanes along Pandora Avenue, one block away from the Metro. It can be busy to bike along Quadra Street, and there is no bike lane, but you can always walk your bike on the sidewalk. There is a bike rack to the left of the Metro Theatre entrance. Please do not use the bike racks behind the Metro (beside the VCM entrance). These are behind a gate, which is locked by the Conservatory in the evenings.



## When you Arrive

You will enter from Quadra Street through the red doors in the picture below. There is a red awning above the doors.

When you are coming from outside, the doors open toward you (pull to open). They are quite heavy. There is no automatic push button. The entrance is level to the ground, but there is a metal lip in the doorframe.



If you are attending a show at the 2021 Victoria Fringe Festival, a Front-of-House Manager will be available outside **30 minutes prior to showtime**. If you arrive more than 30 minutes before the show, there may be a line or group of other attendees outside the studio. The theatre itself opens 15 minutes before each show.

The Fringe Front of House Managers, staff members who supervise the audience areas during shows, are named Annie and Aidan. They look like this:



*Left: Annie (they/them/theirs pronouns) Right: Aidan (he/him/his pronouns)*

There will always be two Front-of-House managers at the Metro. Their job is to help the audience, and usually will be at the front door, or escorting patrons to their seats. If you need help or have any questions, you can ask a Front-of-House manager. One or two volunteer ushers will also be working, and you are welcome to ask them as well. Festival staff, volunteers and artists will have purple lanyards that identify their role. They look like this:



The Front-of-House manager also has information about any effects or content during the show that might be surprising, or that audience members may be sensitive to, such as bright lights, loud sounds, or haze.

There will also be volunteers helping out. All staff and volunteers will be wearing purple Fringe Festival lanyards that look like this. Their name and if they are staff or a volunteer will be handwritten on them.

## Pre-Show Lineup

The Front-of-House Manager will process groups one at a time, and ask basic COVID-19 screening questions. Then they will ask for the name under which you or your group is booked. They will then refer you to an usher to show you to your seats. All seats are assigned and there is no rush seating. Wearing a face mask as you are escorted to your seat is encouraged.

## The Lobby

Once you enter, the usher will bring you through the lobby. It's quite small, and is just for passing through. The lights are LED and incandescent bulbs.



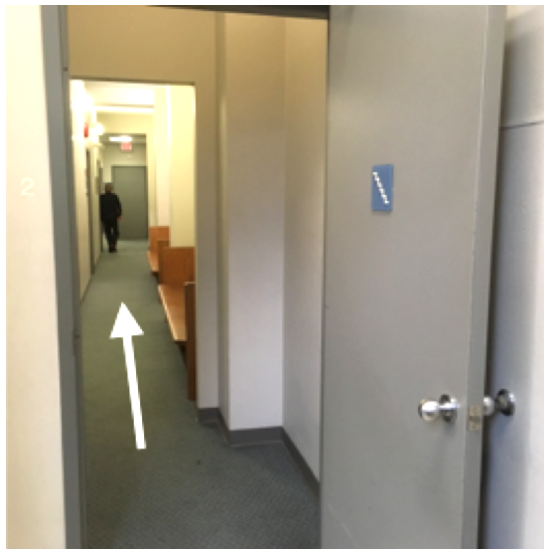
The lobby floor is slightly sloped. There is a handrail on the left side (the right side when leaving the theatre and heading toward the exit).





## Washrooms

The main washrooms are upstairs, accessed by stairs in the corner of the lobby, beside the main entrance. The staircase has railings on both sides.



Above is a picture of what it looks like at the top of the stairs. Follow this hall to get to the washrooms. The lights in this hall and in the washrooms are fluorescent.



You'll then arrive at the two washrooms. Above are the doors. There is a water fountain and hand sanitizer on the wall between the two washrooms.

During Fringe shows, both washrooms are all gender. Intrepid Theatre is committed to gender inclusion and supports people of all genders in choosing the washroom that feels most comfortable. You will see signs on the doors that specify what each washroom includes. The washroom on the left has two sinks and two stalls. The washroom on the right has two sinks, two urinals, and one stall.

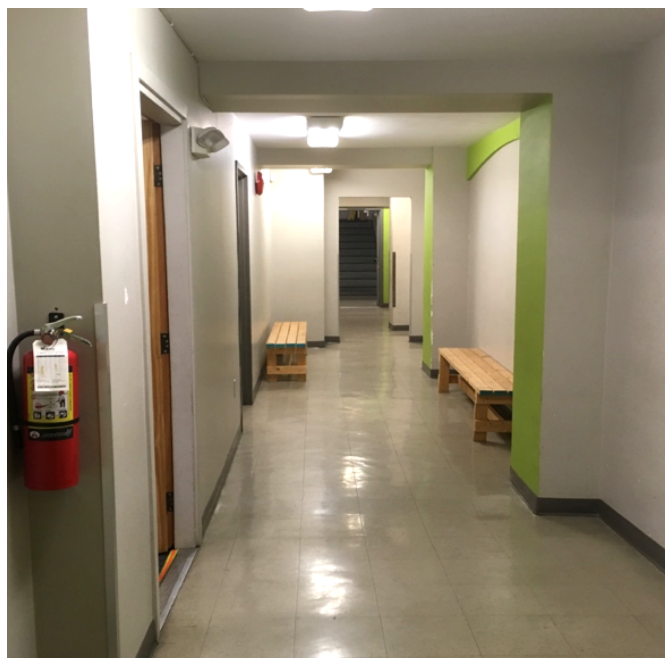
We also encourage audience members to limit washroom capacity to two people.

The wheelchair accessible washroom is on the main floor. It is through a door in the lobby to the left of the theatre doors. It is through a door in the lobby to the left of the theatre doors. This door is usually closed because it also leads to backstage. Please let a volunteer usher or a Front-of-House

manager know you need to access the main floor washroom, and they will show you through.



Once you go through the door, you will be in a long hallway. It takes you past the dressing room (where the performers get ready) and the entrance to the stage. The lights in this hall are also fluorescent.





At the end of the hall is a grey door to the left. The washroom is through there. It has one sink, one toilet, and a grab bar. The lights in this washroom are fluorescent.



## Entering the Theatre

The theatre is through the doors at the end of the lobby. During the Fringe Festival, they will open 15 minutes before the show, and you will be led directly through the doors by an usher or Front-of-House manager.



When you enter the theatre, you'll be in a corridor. To the left leads to the theatre. The corridor looks like this:



## Concession/Bar

To the right of the theatre entrance is the concession/bar. Fringe merchandise (tote bags and pins), alcoholic drinks (beer and wine), and non-alcoholic drinks (sparkling water) will be sold before the show. You must take your drinks to your seat.





## Inside the Theatre

When you reach the end of the hall, the theatre is on the right. It looks like this:



The stage is on the left, and the audience seating is on the right. Chairs are organized tables in groups of two or four, and there are a few individual seats available for solo patrons. You will have an assigned seat. These seats have been sanitized prior to the event.

The cabaret-style tables in the audience look like this:





The first row of tables is ground level and wheelchair accessible. The rest of the tables and seats are up stairs, which have uneven depths. The left and right aisles have one railing; the middle aisle does not have a railing. When you book your tickets, you can let us know about any accessibility needs so that we can assign you seats that work for you.

The stage faces the audience. It may have a set, props, or technical equipment on it. While it may hold a set or technical equipment during a show, this is what a bare stage looks like from the audience:



Before the show, the lights in the audience area will be on. They are incandescent theatre lights and visibility may be dim.

There is an emergency exit located on the opposite side of the theatre from where you entered, at the top of the stairs (the back corner of the theatre).

The emergency exit leads to a gated area. If the gate is locked, a Front-of-House manager will unlock it for you. Below is a photo of the gate and exit door.



If you need to leave the theatre during the performance, please exit through the same doors you entered through. They look like this from the inside:



## Air circulation

The air conditioning will be on at all times during shows, to keep air circulating. This is part of the festival's communicable disease prevention plan. It can get a little bit cold, and the system makes a humming noise. Those who are hard of hearing may want to request a seat near the front (when you book tickets, in the accessibility and seating needs line) to ensure they can hear the performers.

## During the Show

At the beginning of a Fringe Festival performance, a Front-of-House manager will give a short speech, which will include a territorial acknowledgement, ask people to turn their phones off, let people know that if you have to leave the theatre, you can't be readmitted, and information about how to support the festival by donating or buying merch. Patrons who arrive late may be seated between scenes or acts, and may miss part of the show.

**During the show**, all performers at the 2021 Fringe Festival will remain on the stage and will not enter the audience area. There could be effects such as haze, bright lights, or loud music or sounds. The lights in the audience seating area will be lowered, and the theatre may get very dark at times.

All 2021 Victoria Fringe shows run for **approximately 40 min to 1 hour and have no intermission**.

**At the end of the show**, people will clap, and might cheer, to show appreciation for the performers. If it is too loud, it's okay to cover your ears. If you want to show appreciation without clapping, you can wave your hands in the air.



## After the Show

When the show is over, you will exit the theatre to the lobby through the same doors you came in. The aisles might be busy while everyone is leaving their seats. From the lobby, exit through the main front doors (push to open), and you'll be back on the corner of Quadra and Johnson Streets. Please do not gather in the lobby or theatre after the performance.

Each show at the 2021 Fringe will be different, so we cannot give you all the information for every show in this guide, but if you have any questions when you arrive, you can always ask one of the Front-of-House managers. For descriptions of all the shows, visit [victoriafringe.com](http://victoriafringe.com).

## ASL interpretation, Visual Stories, and other resources

Some shows have an ASL interpreted performance, and some have a script available if you would like to read it in advance, or a visual story or show introduction that tells you more about what to expect. Visit the [Fringe Website > Accessibility at the Fringe](#) for more information and to access these resources.

## We hope you enjoy your time at the Fringe!

If you have any questions, or feedback about your experience at the Metro Studio Theatre or about this guide, please contact **Aidan or Annie** by emailing [foh@intrepidtheatre.com](mailto:foh@intrepidtheatre.com) or calling **Intrepid Theatre** at 250-383-2663.

