



## Victoria Fringe Festival 2022

# Accessibility Guide

**What's in this guide:** [\(click to go directly to that section\)](#)

Introduction & ASL Vlogs	2
Venue & Box Office Physical Accessibility	3
Venue Information & Wheelchair Access	4
Visual Venue Guides	13
Free Accessible Tickets Program	13
Front of House and Arriving at the Theatre	14
Accommodations	16
ASL Vlogs & ASL interpreted performances	
Free Accessible Tickets - ASL priority seating	
Script Library	17
Visual Stories	18
Theatre Buddies	19
At-a-Glance Show Guide	20

## Introduction

The Victoria Fringe is committed to creating an inclusive environment and creative home for patrons, artists, staff, and volunteers. We are continually working to identify and break down barriers so that the Fringe can be enjoyed by all.



This is a guide to accessibility at the Fringe. It's intended to be your one-stop-shop to decide if shows are right for you.

If there's information that's missing, or you have any questions, please contact Fringe associate producer **Katrina Darychuk** at (email) [access@intrepidtheatre.com](mailto:access@intrepidtheatre.com), (voice/VRS) 250-383-2663, or in person at Fringe Headquarters, 2-1609 Blanshard Street (at Fisgard).

Fringe staff and volunteers wear lanyards and name tags during the festival, and can assist you at any of our venues.

# Venue & Box Office Physical Accessibility

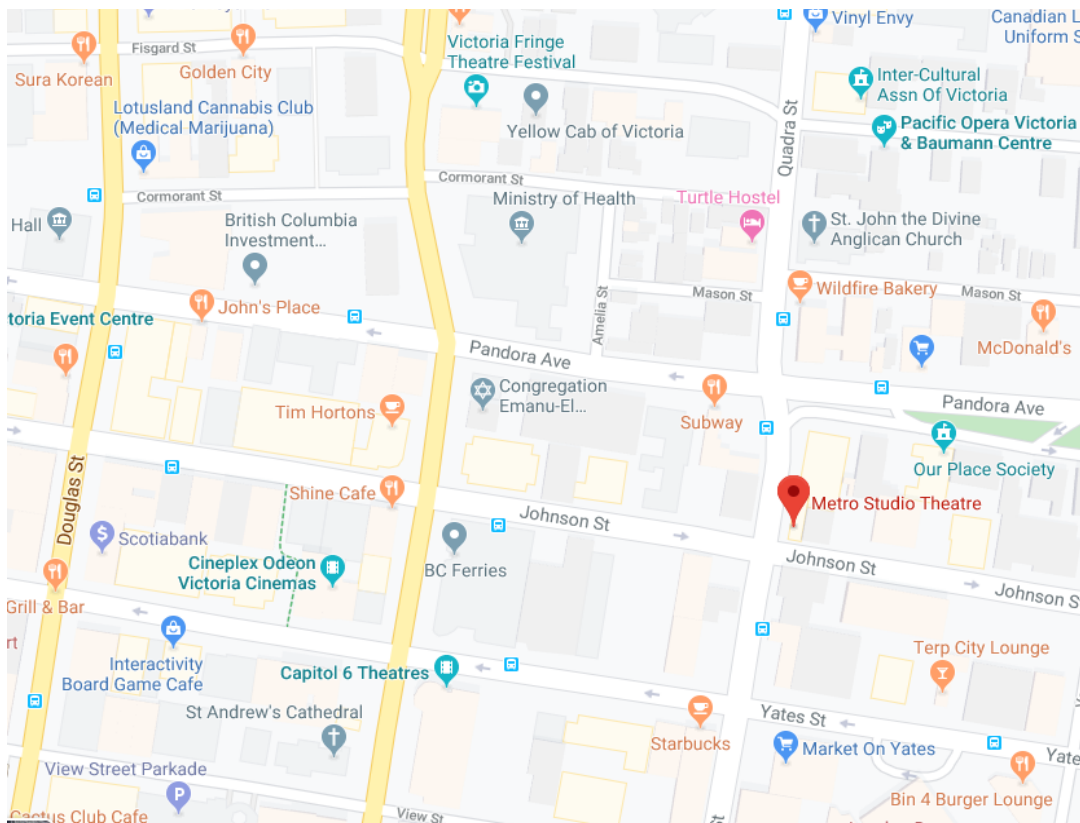
## Venue Information

The Fringe has 6 venues this year:

1. Metro Studio, 1411 Quadra Street (at Johnson)
2. The Roxy, 2657 Quadra Street
3. Baumann Hall, Pacific Opera, 925 Balmoral Road
4. VCM Wood Hall, 900 Johnson Street
5. SKAM Satellite Studio, 942 Fort Street
6. Congregation Emanu-el, 1461 Blanshard Street

## Wheelchair Accessibility

The Metro Theatre: 1411 Quadra St.



The Metro Theatre is wheelchair accessible, with seats on the ground floor for audience members using mobility devices. There is one wheelchair accessible washroom on the main level, through the door that also leads to backstage. Please let a Front-of-house manager or volunteer know if you need to use the accessible washroom (they will be wearing Fringe lanyards and nametags), and they will be happy to show you through. The main patron washrooms are up a set of stairs and are not wheelchair accessible.

**Wheelchair accessible seating:** Please indicate that you need wheelchair accessible seating in the provided field when you book your tickets online, or let our box office coordinator know when you book tickets in person.

**Other seating needs:** When you book tickets, there is a field that asks if you have any accessibility needs. You can type any needs or requests there.

## Lighting

The lights in the entrance area and lobby are LED and incandescent. The lights in the theatre are incandescent.

The lights in the hallways to the washrooms, and the washrooms themselves, are fluorescent, both the upstairs washrooms and the wheelchair accessible washroom on the main floor.

## Air Circulation

The air conditioning will be on at all times during shows, to keep air circulating. This is part of the festival's communicable disease prevention plan. The system makes a low humming noise.

## The Roxy Theatre: 2657 Quadra Street





**Wheelchair accessible seating:** Please indicate that you need wheelchair accessible seating in the provided field when you book your tickets online.

**Other seating needs:** When you book tickets, there is a field that asks if you have any accessibility needs. You can type any needs or requests there.

## **Baumann Hall: 925 Balmoral Road**



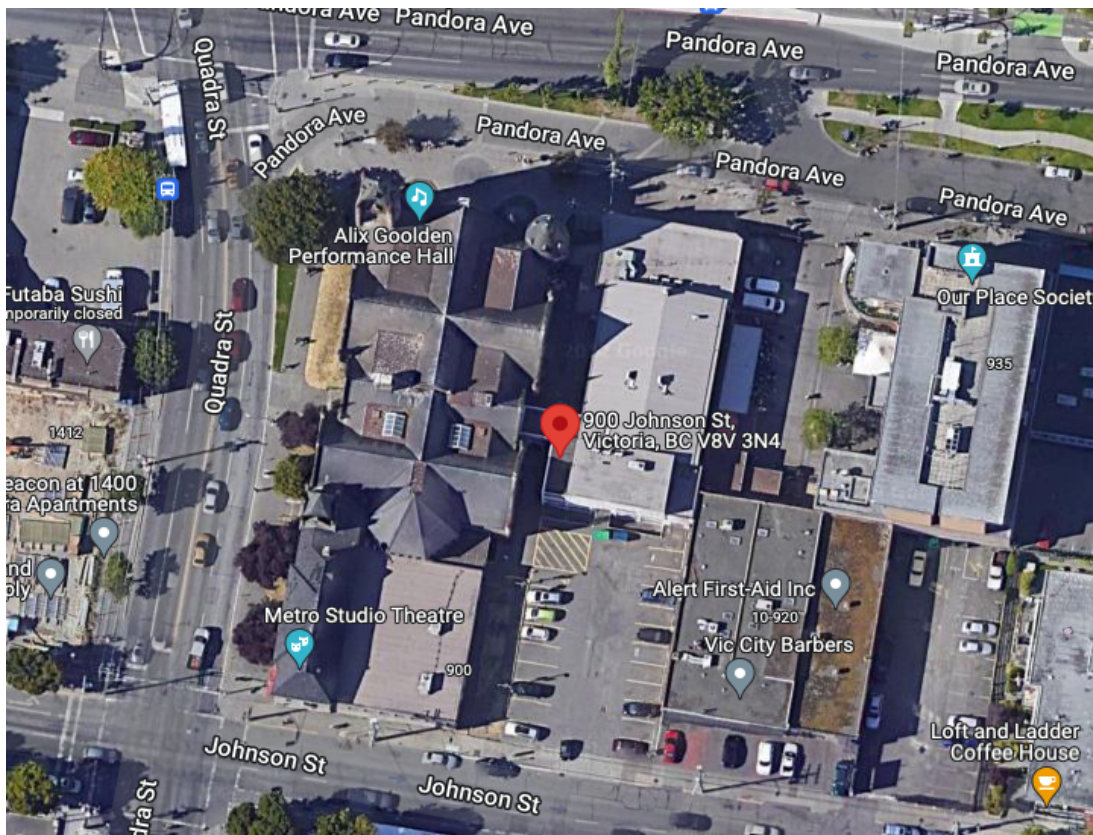
**Wheelchair accessible seating:** Please indicate that you need wheelchair accessible seating in the provided field when you book your tickets online, or let our box office coordinator know when you book tickets in person.

**Other seating needs:** When you book tickets, there is a field that asks if you have any accessibility needs. You can type any needs or requests there.





## VCM Wood Hall: 900 Johnson Street



**Wheelchair accessible seating:** Please indicate that you need wheelchair accessible seating in the provided field when you book your tickets online, or let our box office coordinator know when you book tickets in person.

**Other seating needs:** When you book tickets, there is a field that asks if you have any accessibility needs. You can type any needs or requests there.

### SKAM Satellite Studio: 942 Fort Street







**Wheelchair accessible seating:** Please indicate that you need wheelchair accessible seating in the provided field when you book your tickets online, or let our box office coordinator know when you book tickets in person.

**Other seating needs:** When you book tickets, there is a field that asks if you have any accessibility needs. You can type any needs or requests there.

## Fringe Box Office Headquarters



**The in-person box office** is located at Fringe Headquarters (Intrepid Theatre), at 2 - 1609 Blanshard Street (at Fisgard). The box office area is wheelchair accessible. There is no public washroom at the box office.

**Hours:** 12:30-8pm everyday from August 22 through September 4.

## Lighting

The lights in the entrance area and lobby are LED and incandescent. The lights in the theatre are incandescent. The lights in the hallways to the washrooms, and

the washrooms themselves, are fluorescent, both the upstairs washrooms and the wheelchair accessible washroom on the main floor.

## Air Circulation

The air conditioning will be on at all times during shows, to keep air circulating. This is part of the festival's communicable disease prevention plan. It can get a little bit cold, and the system makes a humming noise.

## Visual Venue Guide

A visual venue guide (visual story) is available for each venue. Visual stories were created with folks on the autism spectrum in mind, but may be useful for everyone. The visual guide gives written information and pictures about what to expect at each venue when you come to see a show, including transit & parking, arriving at the venue, bar/concessions, what to expect during a show, and Covid safety information.



[Click here to open the Metro Visual Story](#) (screen-reader accessible PDF)

[Click here to open the Roxy Theatre Visual Story](#) (screen-reader accessible PDF)

[Click here to open the Wood Hall Visual Story](#) (screen-reader accessible PDF)

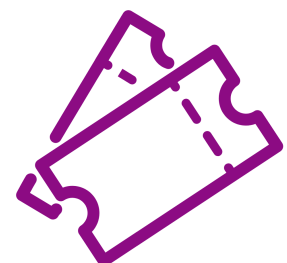
[Click here to open the Baumann Hall Visual Story](#) (screen-reader accessible PDF)

[Click here to open the SKAM Satellite Studio Visual Story](#) (screen-reader accessible PDF)

[Click here to open the Congregation Emanu-el Visual Story](#) (screen-reader accessible PDF)

## Free Accessible Tickets Program

Free tickets are available to this year's festival to anyone who self-identifies as part of the d/Deaf or d/Disability



community. We recognize that theatre has been and is often inaccessible to those communities; tickets are available for any in-person performance, as an effort to reduce barriers.

All tickets need to be booked in advance.

To guarantee an accessible ticket, tickets must be booked before 3pm for weekday shows, and 12pm for weekend shows.

**There are three ways to book tickets:**

**1. Online:**

- a. From the [Fringe Accessibility page](#), sign up with your name and email.
- b. You will receive an email from [access@intrepidtheatre.com](mailto:access@intrepidtheatre.com) with the Accessible booking code.
- c. Go to <https://tickets.intrepidtheatre.com/>, choose your tickets, and type the code in the promo box at checkout. There is a space on the form for you to share any accessibility needs or questions you may have, such as ASL priority seating.

2. **In person.** The in person box office is located at 1609 Blanshard Street. Box Office is open 12:30-8pm everyday from Monday, August 22nd to Sunday, September 4. Katrina and other festival staff members will be there to offer support.

3. **By phone.** If you prefer, you can call the box office at 250 383 2663.

## Front of House and Arriving at the Theatre

Seating begins 15 mins before showtime for all venues, except Venue 1 - The Metro Studio, where seating begins 30 mins beforehand. We recommend you arrive early if you are wanting to get a drink from the Metro bar before the show.



Bring your confirmation email (on a phone or printed) to the show for entry.

**If you have booked an accessible ticket, it will be accompanied by a free Fringe Button.**



If you feel unwell at all, please email [tickets@intrepidtheatre.com](mailto:tickets@intrepidtheatre.com) before the performance begins to exchange your ticket.

Masks are recommended in indoor venues. For more info on COVID-19 policies, [click here](#).

See the venue visual guides and accessibility info [here](#) for more details on venues and specific shows.

**If you require priority seating, please arrive 25 minutes in advance and the Front of House team can assist you.**

All shows start on time. Depending on the show, latecomers may not be seated.

## Accommodations

### ASL Vlogs

Two **ASL Vlogs** created by Deaf artist and consultant Connor Yuzwenko-Martin, will be available mid August

1. [Victoria Fringe - General Information](#)
2. [ASL Interpreted Shows](#) - find out more about each show



### ASL interpreted performances

3 shows have a performance with **ASL interpretation**. Most have one interpreter with their own spotlight on one side of the stage.

[Domesticated Disputes](#): Tuesday, August 30 7:30pm

[Tree](#): Saturday, September 3 8pm

[Ouroboros](#): Friday, September 2, 7:30pm

FringeKids will also have select ASL Interpreted performances. Full FringeKids details available [here](#).

### Free Tickets - Book ASL priority seating

Free tickets are available to d/Deaf and Hard of Hearing audience members.

Check out the [Fringe Accessibility page](#), sign up with your name and email.

You will receive an email from [access@intrepidtheatre.com](mailto:access@intrepidtheatre.com) with the Accessible booking code.



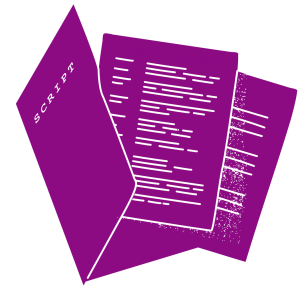
Go to <https://tickets.intrepidtheatre.com/>, choose your Accessible tickets, and type the code in the promo box at checkout.

There is a space on the form for you to share any accessibility needs or questions you may have, such as ASL priority seating.

You can also email [access@intrepidtheatre.com](mailto:access@intrepidtheatre.com) or phone/VRS 250-383-2663.

## Script Library

Some shows have provided scripts, in case it is useful for audience members to read in advance of attending the show. While building the script library, we have in mind people whose first language isn't English, people who process information better textually, d/Deaf and h/Hard of hearing people, people who would like to review the script for content that may be sensitive or triggering, and anyone who would like to know more about a show's content in advance.



*Scripts are all provided in PDF format. If you require a different format, please contact Katrina at [access@intrepidtheatre.com](mailto:access@intrepidtheatre.com) or 250-383-2663.*

**[Visit the Script Library here](#)**. The password is **readfringe22**

**The following shows have a script in the script library:**

[Domesticated Disputes](#)

[Blueberries Are Assholes](#)

[Lesbihonest](#)

[Confessions of an Aging Twink](#)

[The Sci Fi Sampler](#)

[mr.coffeehead](#)

## Accessibility Resources: Visual Stories & Show Introductions

*These resources are all provided in PDF format. If you require a different format, please contact Katrina at [access@intrepidtheatre.com](mailto:access@intrepidtheatre.com) or 250-383-2663.*



### Visual Stories

A visual story is a guide for people to look at prior to going to the theatre so that they know what to expect during the performance. Visual stories were developed for people on the autism spectrum, and go hand in hand with relaxed performances (though there are no dedicated relaxed performances at the 2022 Fringe), but they may be useful for anyone who wants to get a sense of what a show is like before experiencing it.

**The following shows have a visual story** (*click to view or download*):

[TREE](#)

[Ouroboros](#)

[SHIFT](#)

[Domesticated Disputes](#)

[Drag Me to the Opera](#)

[Confessions of An Aging Twink](#)

### Relaxed Elements

Shows with relaxed elements may include reduced lighting and sound effects, keeping house lights on so audiences can see themselves throughout the show, and allowing patrons to exit and re-enter the performance as they feel comfortable.

**The following shows have relaxed elements (*click to view or download*):**

[Tree](#)

[A Side of Rice](#)

[Lesbihonest](#)- 1 show Tuesday, August 30 6:45pm

[Unmatched](#)- 1 show Tuesday, August 30 8pm

[mr.coffeehead](#)

[Domesticated Disputes](#)- 1 show Wednesday, August 31 6pm

## **Show Introductions**

A show introduction outlines audio or visual elements that are essential to understanding a show, often a show that has minimal audio or visual elements, in an effort to make the show accessible to Deaf and Hard of Hearing patrons, or Blind and low vision patrons, without ASL interpretation or audio description.

**The following shows have pre-show introductions included in their show:**

[mr. coffeehead](#)

[Unmatched](#)

## **Low-vision Guides**

[Eleanor's Story](#) - (*click to listen, read, or download*): [Audio Description](#) / [Written Intro](#)

## **Theatre Buddies**

The theatre buddies program pairs a volunteer with patrons who would like assistance during a show. The theatre buddy volunteer meets the patron(s) at the venue or at another requested location, accompanies them into the theatre and sits with them during the show, and can provide information such as giving a description of the set and stage to a patron who is Blind or has low vision. Please email [access@intrepidtheatre.com](mailto:access@intrepidtheatre.com) or call 250 383 2663 to request a theatre buddy. Requests need to be made in advance.

## At-a-Glance Show Guide

This is a quick guide that outlines key information about each show to help you decide if it will work for you, including:

- Show dates
- Genre
- Suitability
- Venue
- Content and trigger warnings
- Audio and visual elements
- Accommodations such as ASL interpretation
- Whether there is a script or accessibility resources



[View or download the Show Guide here.](#)

## See you at the Fringe!

If you have any questions or would like further info, please reach out to Katrina at [access@intrepidtheatre.com](mailto:access@intrepidtheatre.com) or 250-383-2663.