

# Visual Venue Guide for The Roxy



This venue guide is to help you prepare for your visit to The Roxy.

It includes information about the theatre's location, a visual guide to the space, and what you can expect when you come to see a show.



## Territory Acknowledgement

The Roxy Theatre is located in Quadra Village, Victoria, BC, on the unceded and traditional territories of the Lekwungen People, now known as the Songhees and Esquimalt Nations.

For further information, please visit

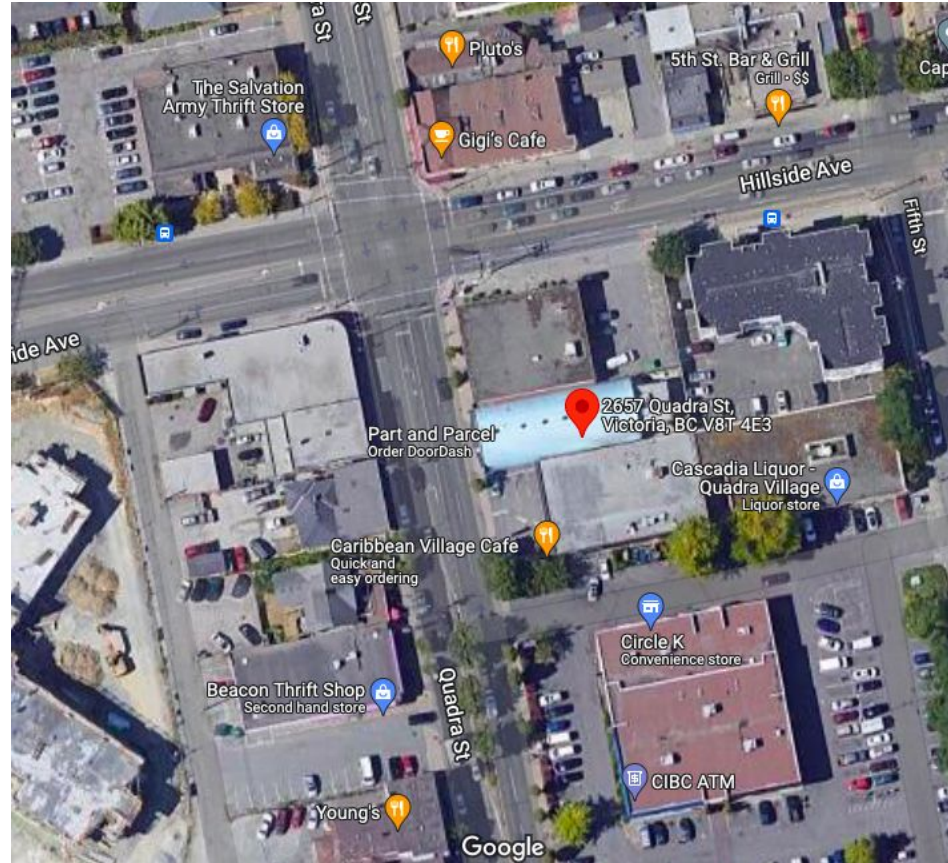
<https://intrepidtheatre.com/land-acknowledgement-resources/>

## Location

The Roxy is located at 2657 Quadra St., Victoria BC, ləkʷəŋən territory.

# Map: 2657 Quadra St.

[Google Maps Link](#)



# About The Roxy

## Performances at The Roxy

- In Search of Cruise Control
- Badges and Bullets
- Blueberries are Assholes
- Idealistic
- Domesticated Disputes
  - 1 performance with relaxed elements: Aug 30, 6pm
  - 1 ASL Interpreted show: Aug 30 7:30pm

## What to expect

- The lights above you will be dark/may be a bit dark sometimes during the show
- It is ok to move
- It is ok to make noise
- It is ok to react
- It is not ok to take pictures or make phone calls
- A front of house manager will make an announcement when the show is about to start



## Parking



There is no designated parking for The Roxy Theatre. There are a limited number of spots in a small parking lot next to the venue on Quadra St.

## Transit



Some of the BC transit bus routes that run near:

- #4, 6, 9

## Cycling

There are 2 bike racks outside the building, one to the left and one to the right of the entrance on Quadra.



# Accessible Tickets Program

Free tickets are available to this year's festival to anyone who self-identifies as part of the d/Deaf or d/Disability community. We recognize that theatre has been and is often inaccessible to those communities; tickets are available for any in-person performance, as an effort to reduce barriers.

All tickets need to be booked in advance. To guarantee an accessible ticket, tickets must be booked before 3pm for weekday shows, and 12pm for weekend shows.

## There are three ways to book tickets:

### 1. Online:

- a. From the [Fringe Accessibility page](#), sign up with your name and email.
- b. You will receive an email from [access@intrepidtheatre.com](mailto:access@intrepidtheatre.com) with the Accessible booking code.
- c. Go to <https://tickets.intrepidtheatre.com/>, choose your tickets, and type the code in the promo box at checkout. **There is a space on the form for you to share any accessibility needs or questions you may have, such as ASL priority seating.**

### 2. In person. The in person box office is located at 1609 Blanshard Street.

Box Office is open 12:30-8pm everyday from Monday, August 22nd to Sunday, September 4. Katrina and other festival staff members will be there to offer support.

### 3. By phone. If you prefer, you can call the box office at 250 383 2663.

## When You Arrive



Line-ups for shows at the Roxy will run alongside the left of the building.

This is where you will wait to enter the theatre.

Once you've lined up, a Fringe volunteer will come by to check your ticket confirmation and Fringe button.



Once they've verified these, they will issue you a small ticket which you will show to the Box Office when you enter the theatre.



## When You Arrive



Once the venue opens, you will enter through the doors and the Box Office will be inside on the right.

It won't look exactly like this, but there will be Fringe staff and volunteers there to greet you.





## Doorway Floor



There is a small wooden lip at the entrance doors, a low profile rubber mat outdoors and the inside lobby flooring is carpet.



# Box Office



Laurel Green  
Front of House Manager



At the Box Office, you will meet Laurel, the front of house manager, and Fringe volunteers.

This is where you will show your ticket confirmation and button.

Fringe volunteers can help show you to the theatre or answer any questions.

## Chill-Out Zone

- If you want to leave the Theatre at any time, there is a Chill-Out zone in the lobby you can visit.
- An usher can help you go there
- For some shows, you may be able to re-enter anytime. Other shows you will have to check in with an usher to see if you can re-enter.

# Theatre space & Priority seating

- The theatre space seats 200 people.
- **Priority seating:** We recommend arriving 25 minutes early if you need an accessible seat so our Front of House staff can support you.

# Entering the Theatre

There are 2 entrances to the theatre, one on the left and one on the right. They both have double doors that will be propped open.







There are 2 aisles in the audience with 3 seating areas: left, centre, and right.



The flooring changes as you enter the performance space.

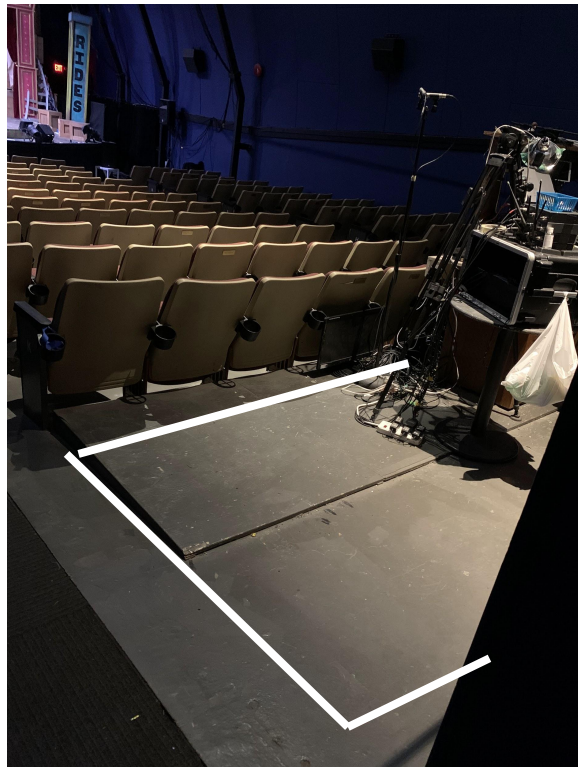
The lobby carpet ends and a low profile black carpet runs the length of the theatre aisles.



# Accessible Seating

There is priority seating for patrons using wheelchairs or mobility aids near the left entrance to the theatre.

A Fringe volunteer can help you find this.



# Accessible Washrooms



There are 2 washrooms in the lobby, one on the left and one on the right.

Each of them are all gender for the Festival.

The washroom on the left side will be propped open, and has multiple stalls, including an accessible stall with a grab bar.





The washroom on the right side has urinals and an individual stall with a grab bar.





## During the show

At the show start time, the Front-of-House manager, an Intrepid staff member, or someone from the show, will sometimes talk for a few minutes to welcome the audience and give some information about the show. They will mention effects that could be surprising or that audience members could be sensitive to, like haze or strobe lighting, and any content warnings about material in the show that could be triggering or upsetting.



Fringe festival performances will start promptly on time. Some shows may allow latecomers, some may allow audiences to come and go throughout the show, and some may not admit latecomers at all—it varies from show to show. See individual show details at [intrepidtheatre.com/fringe](https://intrepidtheatre.com/fringe)



During the show, the performers will usually be on the stage, but may be in the audience area too. There could be effects such as haze, bright lights, or loud music or sounds. The theatre may get very dark at times.



At the end of the show, people will clap, and might cheer, to show appreciation for the performers. If it is too loud, it's okay to cover your ears. If you want to show appreciation without clapping, you can wave your hands in the air.



# Covid Safety

Masks are strongly recommended for audiences and volunteers and are required to be worn by Fringe staff and artists.

Artists are not required to wear masks during their performance.

Here is the [COVID Safety and Communicable Disease Prevention Plan](#). Should you have any questions regarding this COVID-19 Safety & Communicable Disease Prevention Plan, please contact: Sammie Gough, Producer, Intrepid Theatre ([sammie@intrepidtheatre.com](mailto:sammie@intrepidtheatre.com))



## Here are some people who work behind the scenes

NOTE: These people work behind the scenes, so you might not see them.



Zoey Collins  
Assistant Production Manager

Maybe you will like the play, and maybe not, that is ok.  
It's alright to feel happy or sad or scared or angry after  
seeing a show.

At the end of the play, people will clap. That is a way  
to say thank you to the people who made the show. It  
is also a way to say you like the show.  
It's ok to cover your ears if that is too loud.  
You can also wave your hands instead of clapping.

## After the show

If there is an event after the show, like a reception or a discussion with the artist, it will be in the theatre, and there will usually be an announcement to tell you about it.

At Fringe people sometimes thank the artist or ask them questions and this is totally fine. The artist will let audiences know if they want to chat outside the theatre or inside depending on how much they have to pack up. They might share further info about their show or how to get in touch with them in the future.

Artists sometimes have merchandise for sale on the stage or in the lobby.

When the show is over, you will exit the theatre to the lobby through the same doors you came in. The aisles might be busy while everyone is leaving their seats. From the lobby, exit through the main front doors and you will be back on Blanshard St.

# Feedback

If you have attended a show at this venue and have further suggestions to include or correct in this guide, please take a moment to fill out our brief [feedback form](#).

You can also share your thoughts with us through email at [access@intrepidtheatre.com](mailto:access@intrepidtheatre.com) or by phone at 250-383-2633.

We are committed to continuously improving our accessibility resources and appreciate your help.