

The Baumann Centre Visual Guide



VICTORIA
FR!NGE
FESTIVAL

This venue guide is to help you prepare for your visit to the Baumann Centre. It includes information about the theatre's location, a visual guide to the space, and what you can expect when you come to see a show.

TERRITORY ACKNOWLEDGEMENT

The Baumann Centre is located in Downtown Victoria, BC, on the territories of the ləkʷəŋən people, now known as the Songhees and Esquimalt Nations.

For further information, please visit

<https://intrepidtheatre.com/land-acknowledgement-resources/>



ABOUT

The Baumann Centre is a community, music and administrative facility and a catalyst for regional arts collaboration, music creation, and performances.

The Wingate Studio is home for chamber performances, opera rehearsals, artist training programs, and an array of initiatives to nurture artists, engage the community, and educate and delight families and youth.

LOCATION

The Baumann Centre is located at **925 Balmoral Road, Victoria, BC, ləkʷəŋən territory.**

Information on bus routes on page 8.

PERFORMANCES AT THE BAUMANN 2023

★ ALL ACCESSIBILITY MATERIAL AVAILABLE FROM FRONT-OF-HOUSE AT THE VENUE AND
VICTORIAFRINGE.COM

- ***Hot Dogs at the Eiffel Tower*** - The British Woman

Shows: Thursday August 24th 6:00pm, Tuesday August 29th 6:15pm, Friday September 1st 5:00pm, Saturday September 2nd 7:00pm, Sunday September 3rd 12:15pm.

- ***Love, Sharks & Frenching: A Hot Date with Lou Laurence*** - Lou Laurence

Shows: Friday August 25th 8:30pm, Saturday August 26th 6:00pm, Sunday August 27th 4:15pm, Saturday September 2nd 4:45pm, Sunday September 3rd 5:00pm.

- ***June Bug*** - Ragamuffin Productions

Shows: Saturday August 26th 4:00pm, Thursday August 31st 6:30pm, Friday September 1st 7:00pm, Saturday September 2nd 2:45pm, Sunday September 3rd 2:15pm.

- ***Innocence Astray*** - Third Draft Theatre

Shows: Thursday August 24th 8:00pm, Friday August 25th 6:30pm, Saturday August 26th 1:15pm, Sunday August 27th 12:15pm, Wednesday August 30th 9:15pm.

- ***POEMS FOR GOD*** - ZeekTech Productions

Shows: Sunday August 27th 2:15pm, Tuesday August 29th 8:15pm, Wednesday August 30th 6:30pm, Thursday August 31st 6:30pm, Friday September 1st 9:15pm.



THE 'FRINGE ON THE HOUSE' PROGRAM

Free tickets are available to all companions to patrons who identify as a part of the d/Disability community. Just call our box office at 250-383-2663 and ask for a companion ticket when booking.

We are also offering a new 'Fringe on the House' program this year. If for any reason the cost of a ticket is beyond your means, we have a select number of tickets per show available for free, no questions asked. Just call our box office at 250-383-2663 to book.

Fringe on the House tickets are limited to one ticket per person, per show, up to a maximum of 5 shows.

All tickets need to be booked in advance. To guarantee a Fringe on the House or companion ticket, tickets must be booked before 3pm for weekday shows, and 12pm for weekend shows.

There are two ways to book these tickets:

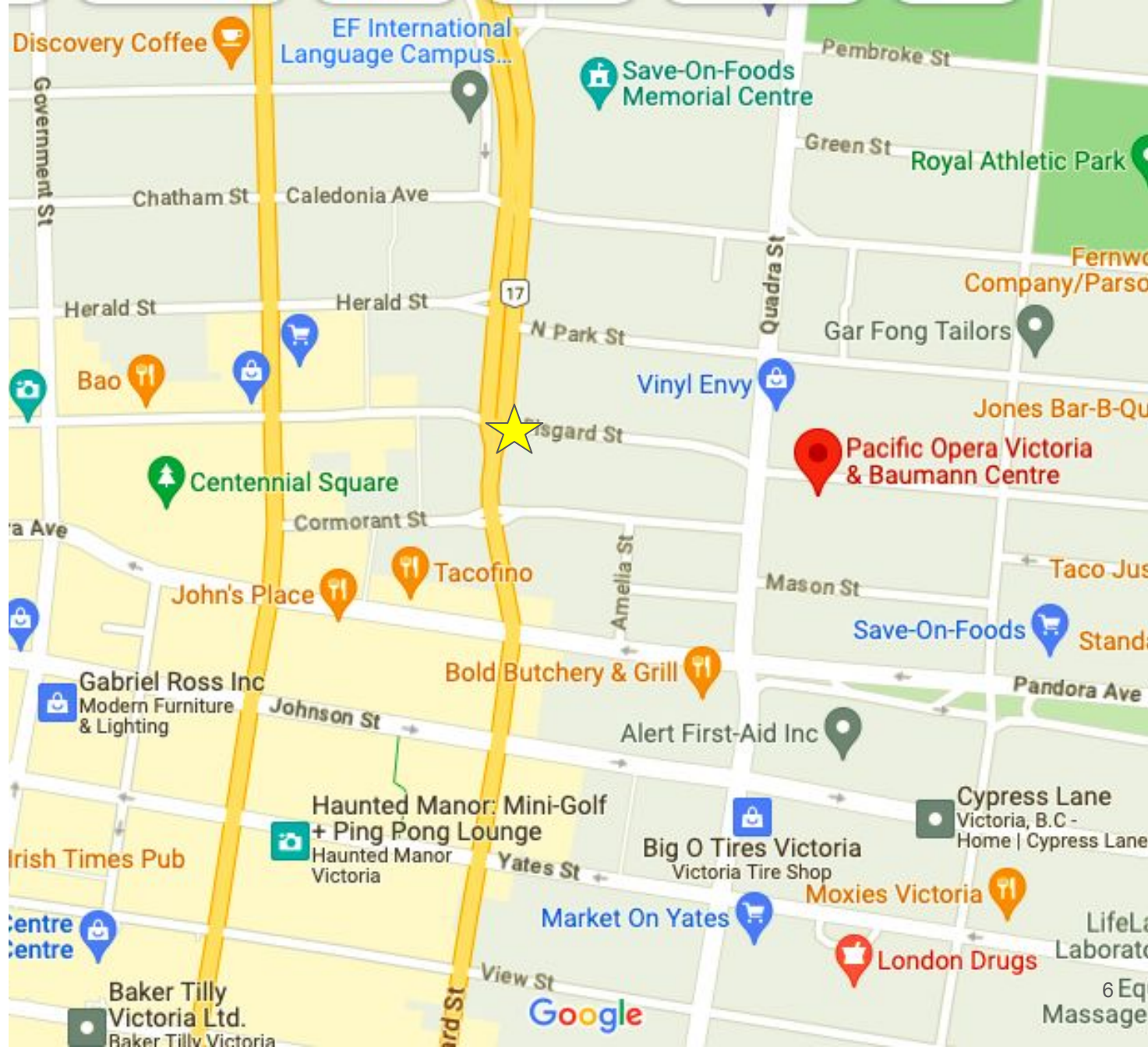
1. **In person.** The in person box office is located at 2-1609 Blanshard Street.
 - a. Box Office is open 12:30pm-5pm starting August 1st, and then everyday from Monday, August 21st to Sunday, September 3 from 12:30-6:30pm. Wren and other festival staff members will be there to offer support.
2. **By phone.** If you prefer, you can call the box office at 250 383 2663 during the above Box Office hours.

SITE MAP

[Click on this link to view on Google Maps.](#)



=
INTREPID THEATRE
BOX OFFICE
(2-1609 Blanshard St)



PARKING



There is **no** designated parking for the Baumann Centre.

There is **street parking** along Balmoral Street running both sides, **East** of Quadra St. (see pictured cars).

There are also a few parking spots along Quadra St.



TRANSIT



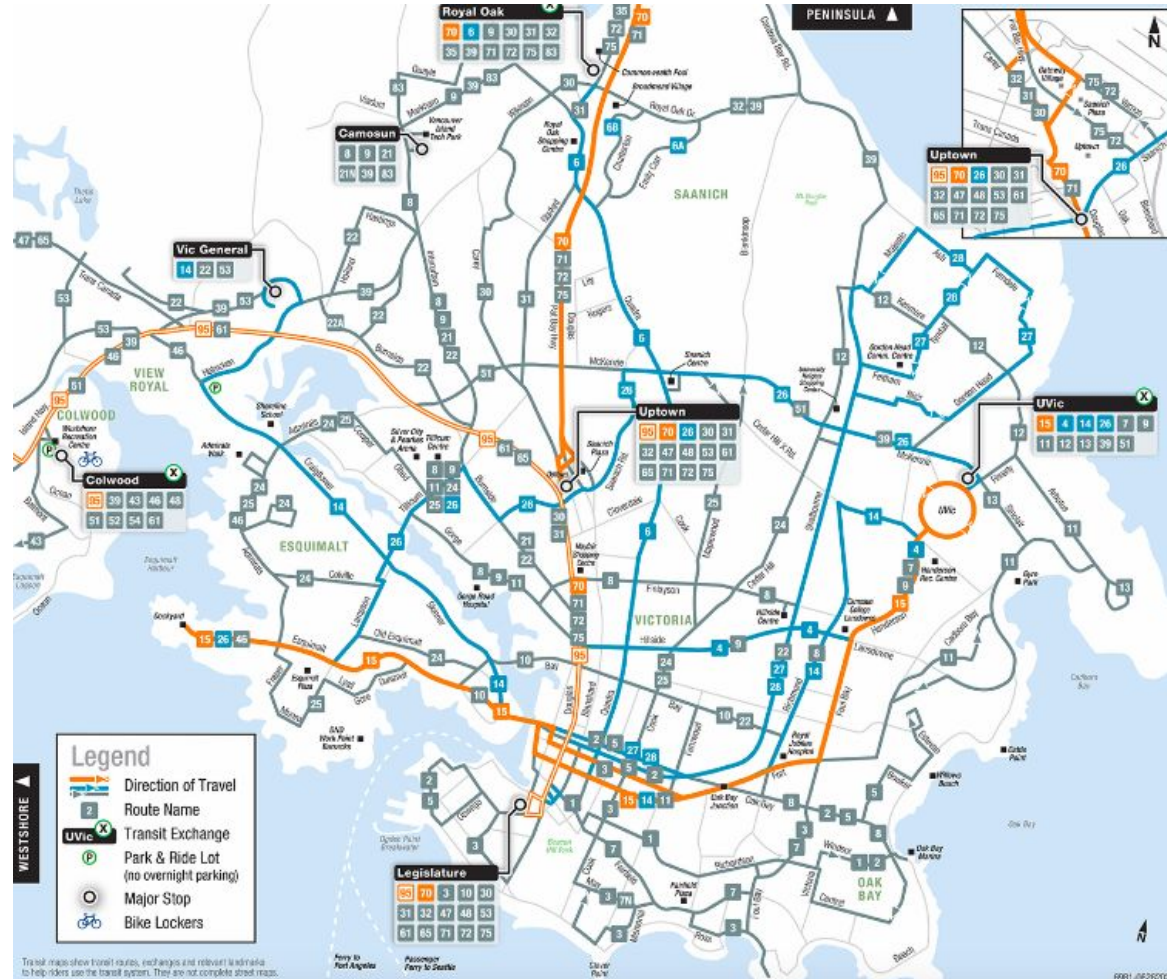
The BC transit bus routes that run near the Baumann Centre are:

#6 along Quadra St.

#2, 5, 27, 28 along Pandora Street, two blocks away.

[Click this link](#) to see nearby bus stops and their accompanying routes.

[Click this link](#) for the BC Transit website, complete with schedules, routes, and image descriptions including the one to the right.



CYCLING



There are protected bike lanes along Pandora Ave., two blocks South from the Baumann Centre.

It can be busy to bike along Balmoral and Quadra St., and there is no bike lane, but sidewalks are always available, though not recommended for high-speed.

There are four large metal-ring bike racks outside the venue.

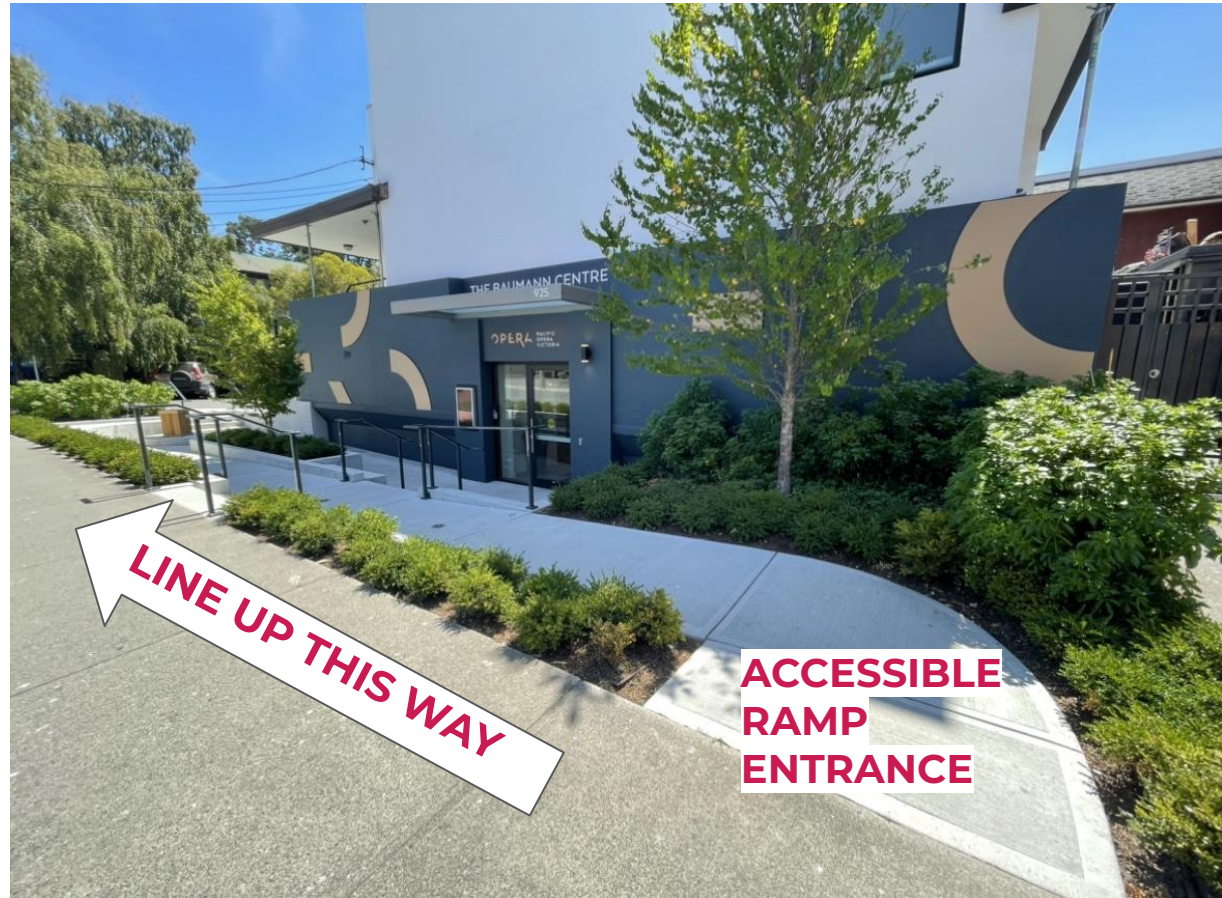
[Click this link](#) to find your safest cycling route to the Baumann Centre from your location.



WHEN YOU ARRIVE

When you arrive, you will line up on the sidewalk to the left of the entrance. There will be a fringe poster and signage to guide you.

A Fringe volunteer will also be present to instruct you where to go if you need help.



TICKETS AND FRINGE BUTTONS

All tickets are online and in advance at www.VictoriaFringe.com. You will receive an email with a QR code that has ALL your purchased tickets for the Fringe (this QR code will update if you purchase more tickets later).

Once you've lined up, a Fringe line concierge will come and check you are in line for the correct show and that you have your Fringe button.

If you purchased your Fringe button online, you can show proof of purchase and the volunteer will give you a button. If you have not purchased a button, you will be able to do so at the venue without losing your spot in line.

Your ticket will be scanned by a volunteer when the doors to the venue open.



FRINGE BUTTON

THE LOBBY

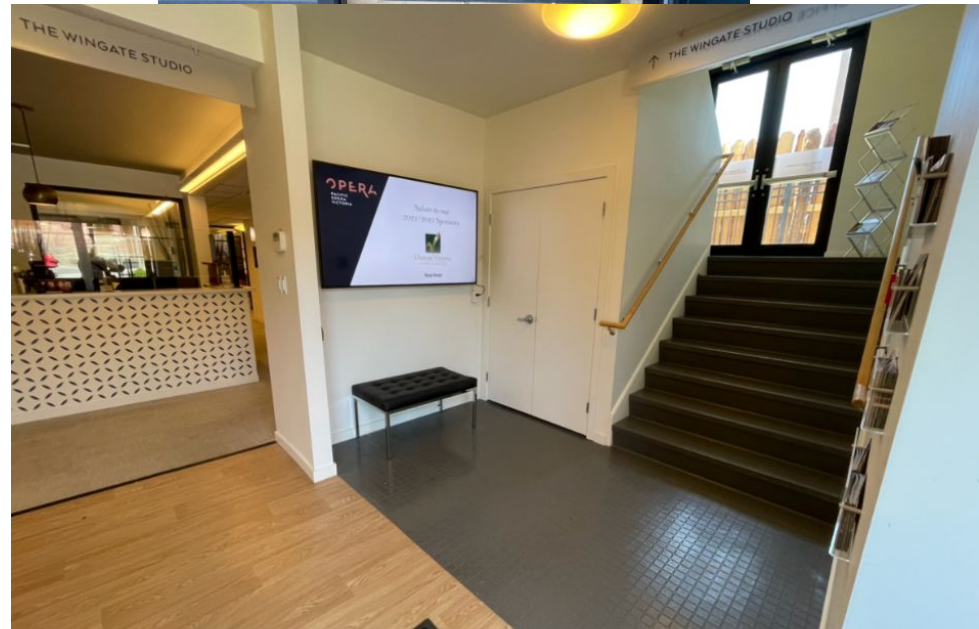
Once you enter, you will be in the lobby.

This is where you may purchase a button from a Fringe Volunteer if you have not already.

To your immediate right is the box office table (pictured currently as a bench), where you will meet the Front-of-House manager.

They are an Intrepid Theatre staff member who supervises the audience areas. Their job is to help the audience.

If you need to use the washrooms before the doors open, you will be escorted by a volunteer or FOH Manager



FRONT OF HOUSE STAFF & VOLUNTEERS



Front of House Manager
Jamie Anderson

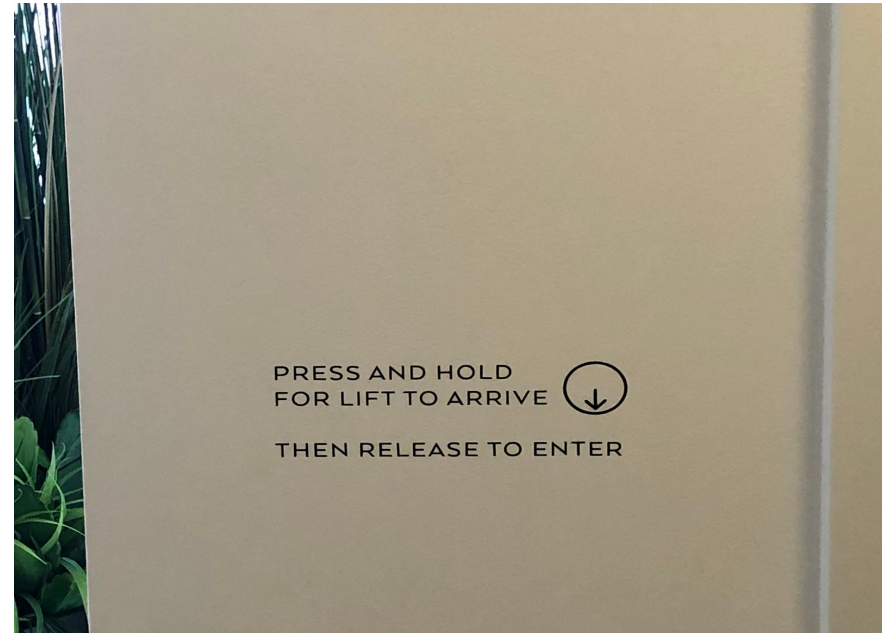
In the Box Office, you will meet Jamie (any/all pronouns) the front of house manager, and Fringe volunteers, who are responsible for showing you to the theatre and answering any questions you have.

ELEVATOR

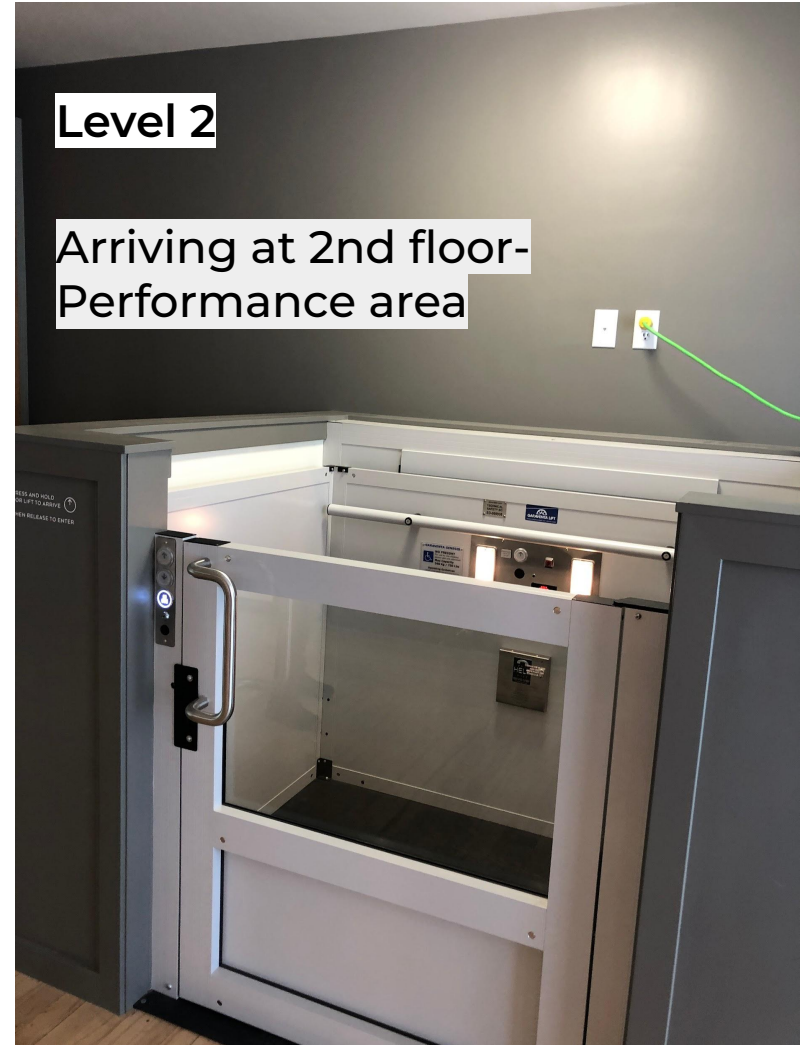


The elevator has a pull door that opens outwards. To call the elevator you need to press and hold the “down” button for the lift to arrive, then release the button to open the door and enter.

A Fringe volunteer will be available to support patrons in using the lift.



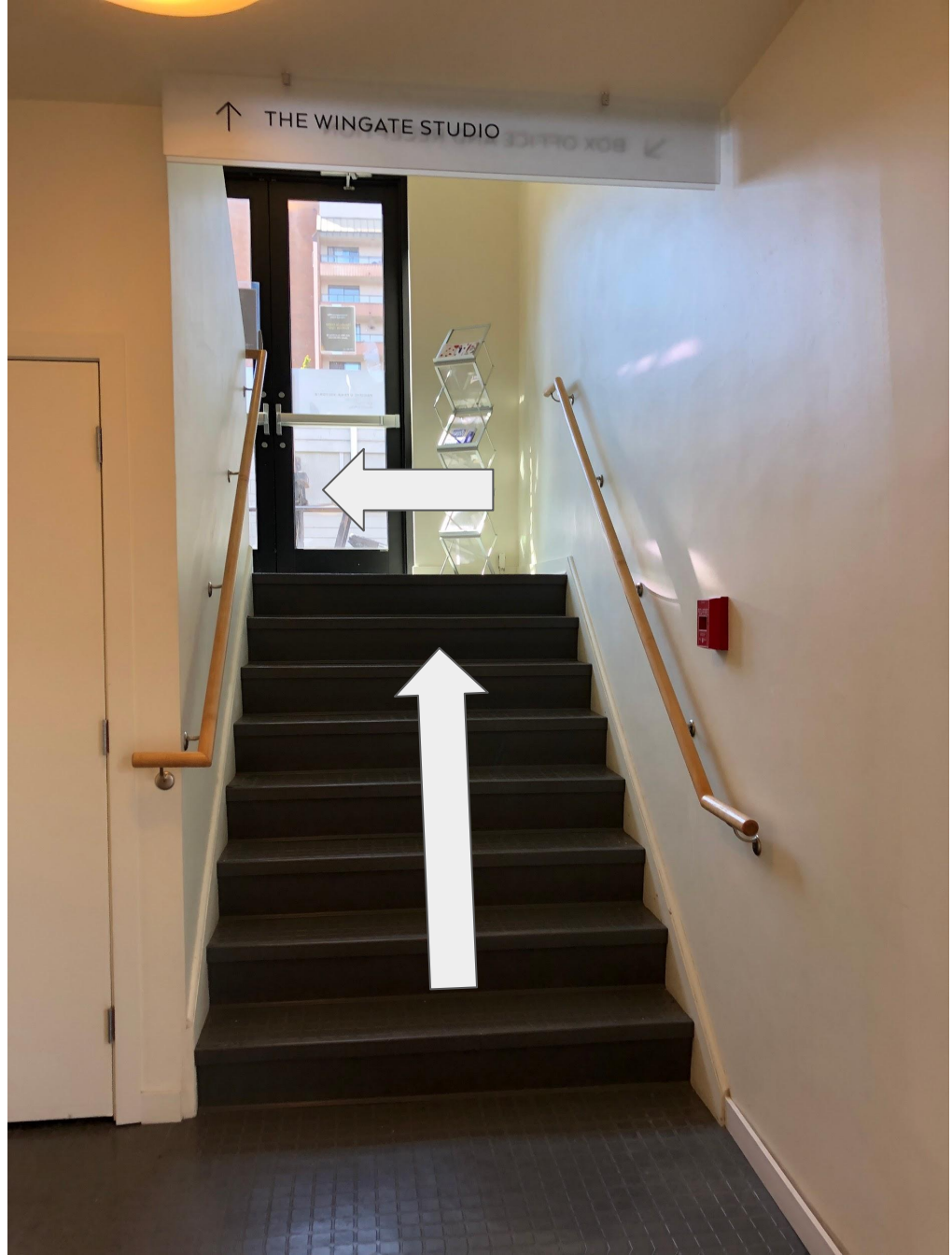
ENTERING & EXITING THE ELEVATOR



STAIRS

If you are using the stairs, you will go directly up 2 flights of stairs which are 8 steps each with railings on both sides.

The entrance to the theatre is at the top.



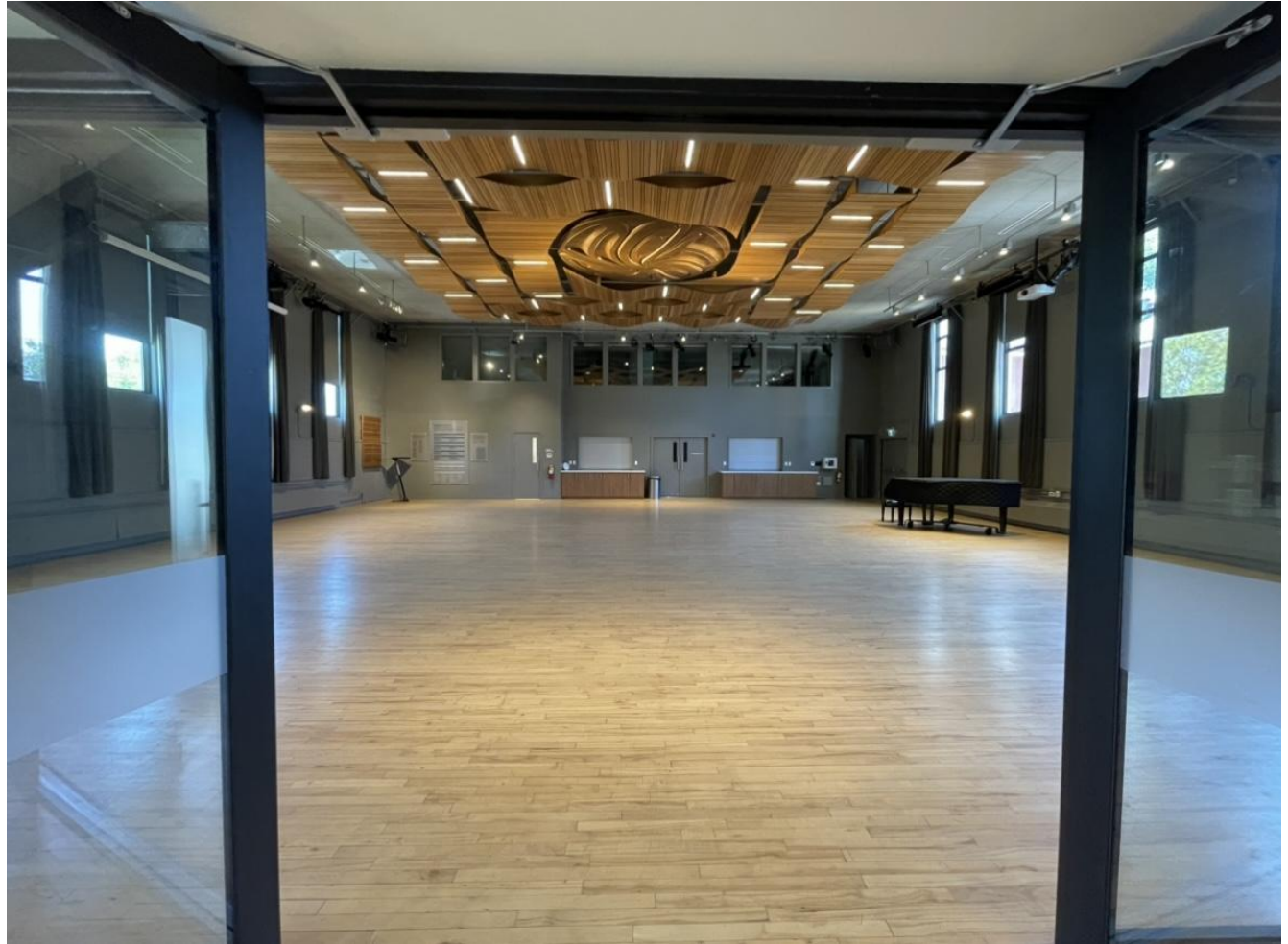
ENTERING THE THEATRE



ENTERING THE THEATRE

The theatre will be fully set up when you arrive.

The stage is subject to change per show, however audience seating will be clearly visible.



EXITING THE THEATRE

When you exit the space, you will turn left to go down the stairs.

If you are using the elevator, a Fringe volunteer or staff member will assist you.

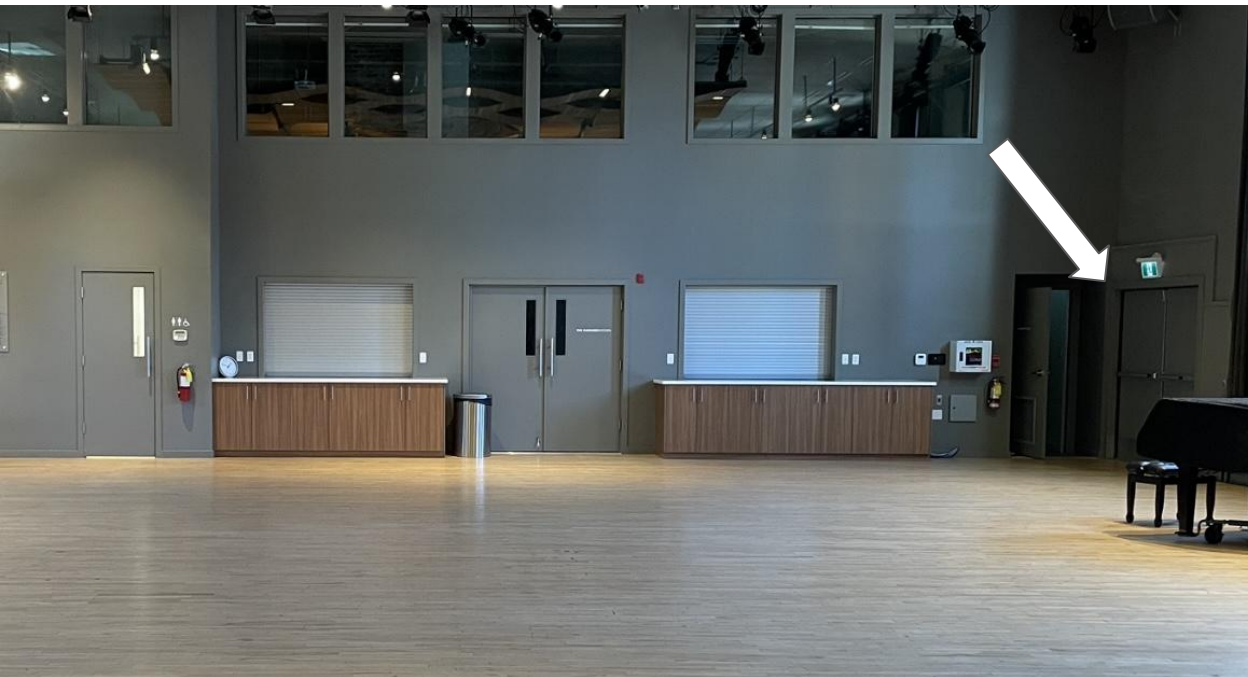


EMERGENCY EXITS

There are **TWO** emergency exits. Along the same wall as the washroom entrance is the first emergency exit.

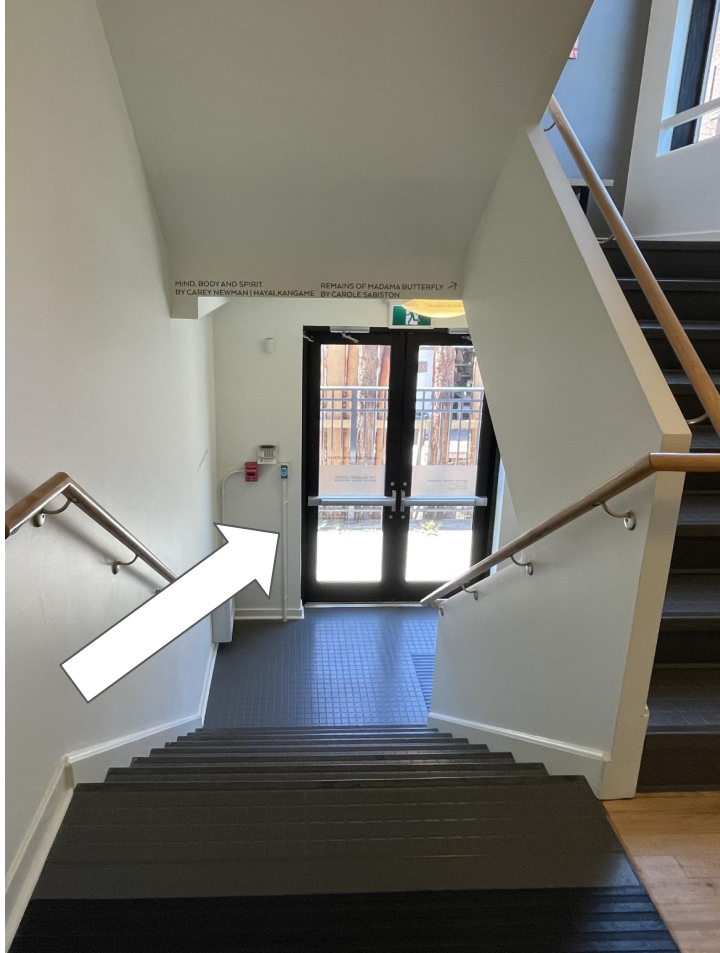
Descend two flights of stairs and follow the path out the front gate.

Both exits involve stairs, and the only accessible exit is to return down the elevator.



EMERGENCY EXITS

The **SECOND** emergency exit is on the first landing of the main staircase (you would have passed it if you took the stairs). This exit also leads directly to the exit gate at the front of the building.



WASHROOMS



At the back of the space is the door to the washrooms, which will be propped open. There are 2 accessible, all-gender washrooms on site.

WASHROOMS

The doors to each washroom are heavy and you may require a Fringe volunteer to help when entering/exiting the general area. Each washroom has an accessible stall with a grab bar.



MISTING STATIONS

In case of extreme heat, Victoria has 13 misting stations for public use. The nearest station is at the corner of Green St and Vancouver St., across the street from Royal Athletic Park.

All misting stations can be found [here on this list.](#)



THEATRE SPACE AND PRIORITY SEATING

- The Baumann Centre theatre space can seat 100 people.
- We recommend arriving 25 minutes early if you need an accessible seat so our Front of House staff can support you.

DURING THE SHOW

At the show start time, the Front-of-House manager, an Intrepid staff member, or someone from the show will talk for a few minutes to welcome the audience and give some information about the show. They will mention any and all elements of the show that audience members could be sensitive to, like haze, strobe lighting, loud noises, etc. and any content warnings about material in the show that could be triggering or upsetting.

Fringe festival performances will start promptly on time. Some shows may allow latecomers, some may allow audiences to come and go throughout the show, and some may not admit latecomers at all—it varies from show to show. See individual show details at victoriafringe.com.

During the show, the performers will usually be on the stage, but may be in the audience area too. Any interaction with audience members will be prefaced in the front of house speech, and performers will seek consent before any interaction takes place.

At the end of the show, the performers will bow while the audience claps. Some patrons choose to wave their hands in the air should they not want to clap due to noise, and some choose to cover their ears if needed.



COVID SAFETY

Masks are strongly recommended for audiences, volunteers, Fringe staff and artists.

Artists are not required to wear masks during their performance.

Should you have any questions regarding this COVID-19 Safety & Communicable Disease Prevention Plan, please contact: Emmett MacMillen, Producer, Intrepid Theatre
(emmett@intrepidtheatre.com / 250-383-2663)

AFTER THE SHOW

If there is an event after the show, like a reception or a discussion with the artists, it will be in the theatre, and there will usually be an announcement to inform the audience either in the front of house speech or directly after the show.

At Fringe, people sometimes thank the artist or ask them questions afterward. The artist will let audiences know if they want to chat outside the theatre or inside depending on how much they have to pack up. They might share further info about their show or how to get in touch with them in the future.

Artists also sometimes have merchandise for sale on the stage or in the lobby.

When the show is over, you will exit the theatre into the lobby through the same doors you came through. The aisles may be busy while everyone is leaving their seats. From the lobby, exit through the main front doors (push to open), and you'll be back on Balmoral Street.

FRINGE ACCESSIBILITY PAGE

For information about accessibility measures at Victoria Fringe, such as relaxed performances, American Sign Language interpretation, and visual stories, visit our website <https://bit.ly/fringeaccess>.

WE HOPE YOU ENJOY YOUR VISIT!

If you have attended a show at this venue and have further suggestions to include or correct in this guide, please take a moment to fill out our brief [feedback form](#).

You can also share your thoughts with us through email at pa@intrepidtheatre.com or by phone at 250-383-2633.

We are committed to continuously improving our accessibility resources and appreciate your help.