

Intrepid Studio Visual Guide



This venue guide is to help you prepare for your visit to the Intrepid Studio. It includes information about the theatre's location, a visual guide to the space, and what you can expect when you come for a visit.

TERRITORY ACKNOWLEDGEMENT

The Intrepid Studio is located in Downtown Victoria, BC, on the territories of the ləkʷəŋən people, now known as the Songhees and Esquimalt Nations.

For further information, please visit

<https://intrepidtheatre.com/land-acknowledgement-resources/>



ABOUT

The Intrepid Studio is Intrepid theatre's main operational building, and the box office & artist's hub during the Fringe festival. This year, the Intrepid Hub is also the home of Fringe Cabaret, our nightly event featuring local artists, drinks, music, and good times.

LOCATION

The Intrepid Studio is located at **2-1609 Blanshard St, Victoria, BC, ləkʷəŋən territory.**

Information on bus routes on page 7.

FRINGE CABARET

The Fringe Cabaret is a free event that runs every night from August 24th - September 2nd 2023, EXCEPT Monday, August 28th.

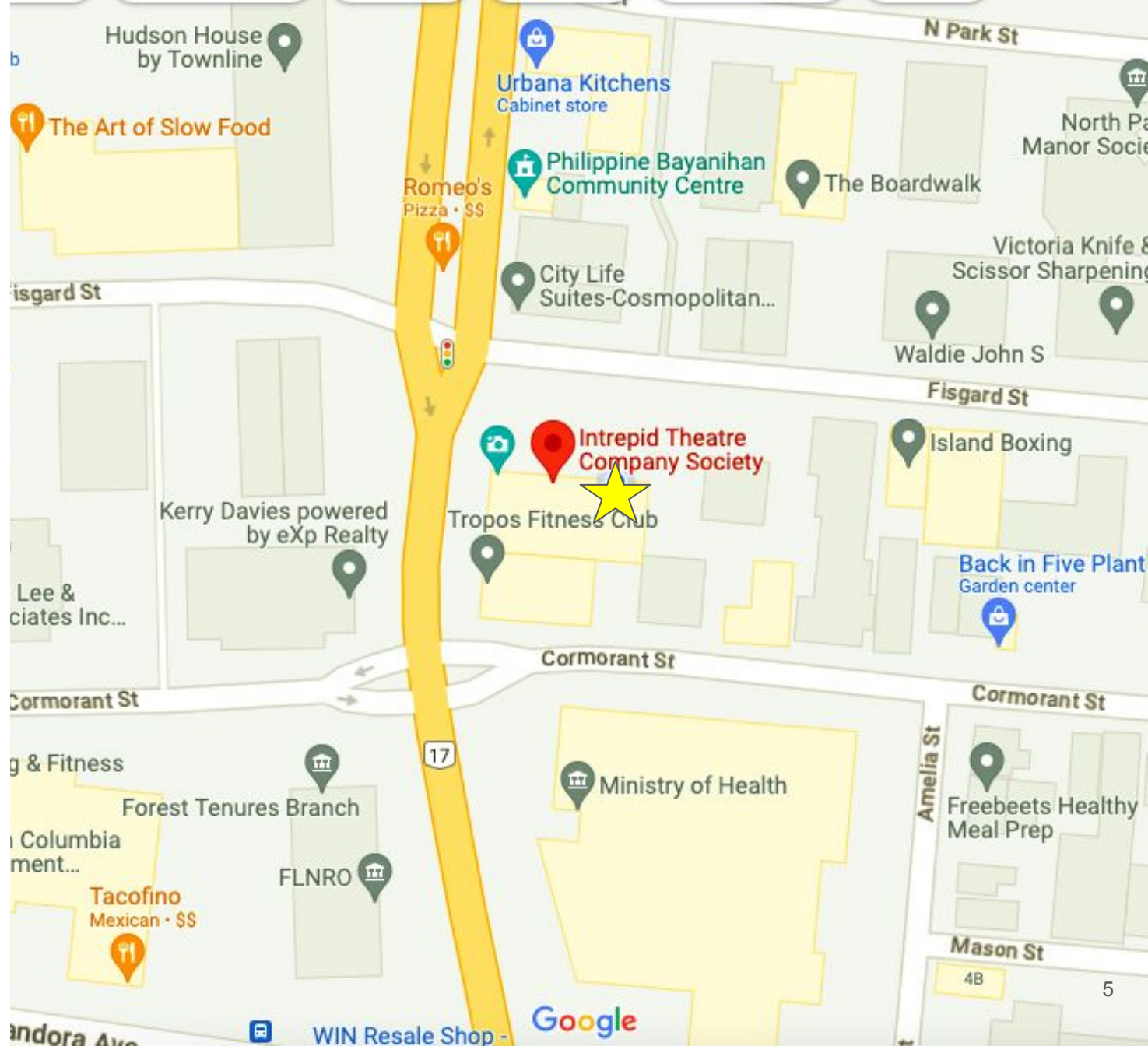
Doors/DJ : 8:00pm

Programming: 9:30-10:15pm

You are free to come and go as you wish, and stay after the programming has finished to continue enjoying our DJ set. This event is an opportunity to see some other local performances throughout the run of Fringe, and to finish off a day of shows with some music, beverages, and community! **Your fringe button is required for admission.** You may purchase a button at the box office.

SITE MAP

[Click on this link to view on Google Maps.](#)



PARKING

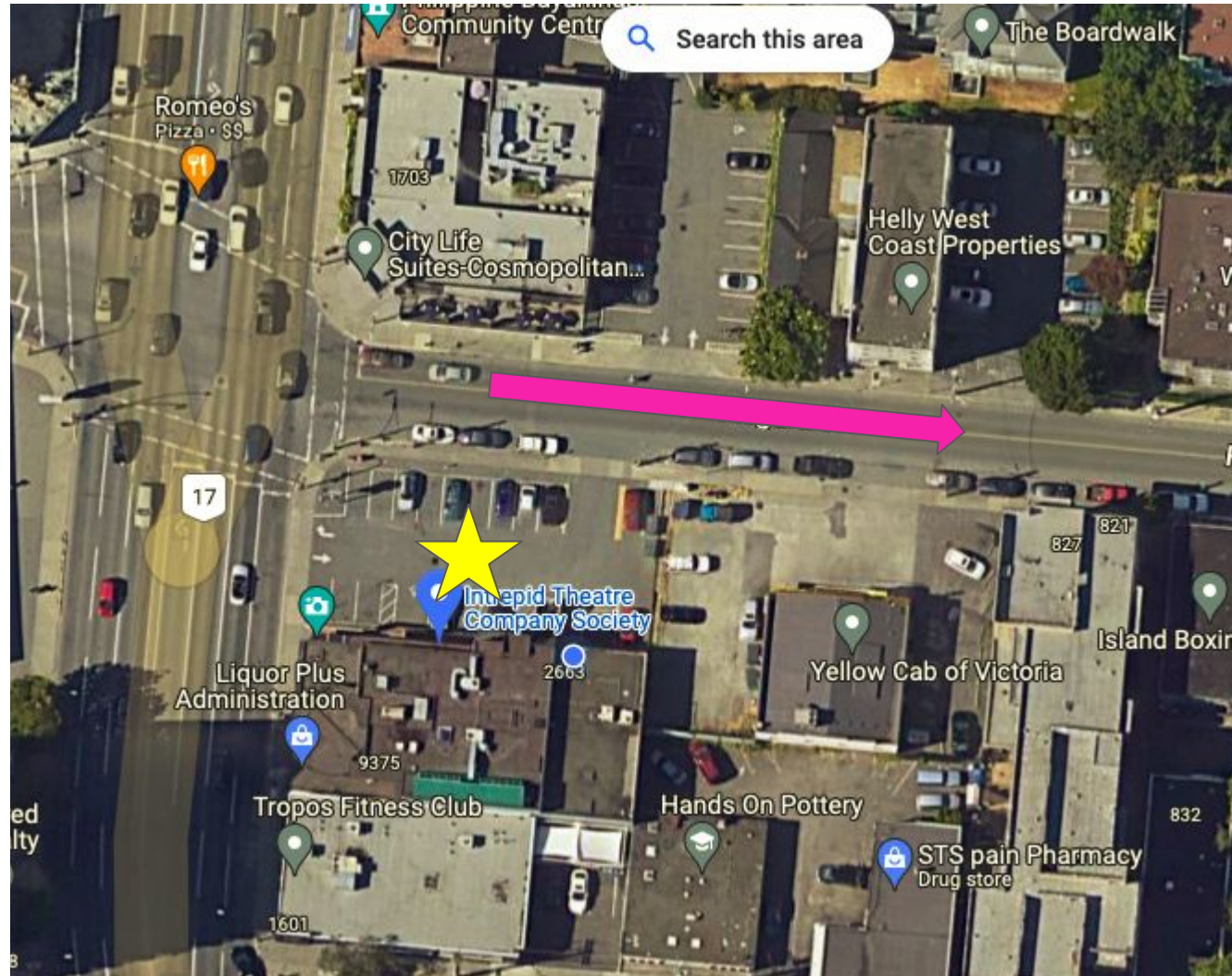


There is **no** designated parking for Intrepid Hub.

There is a parking lot outside the hub usually with spaces available however other businesses in the building will also be using them.

There is also **street parking** along Fisgard Street.

The nearest parkade is the Johnson St parkade.



TRANSIT



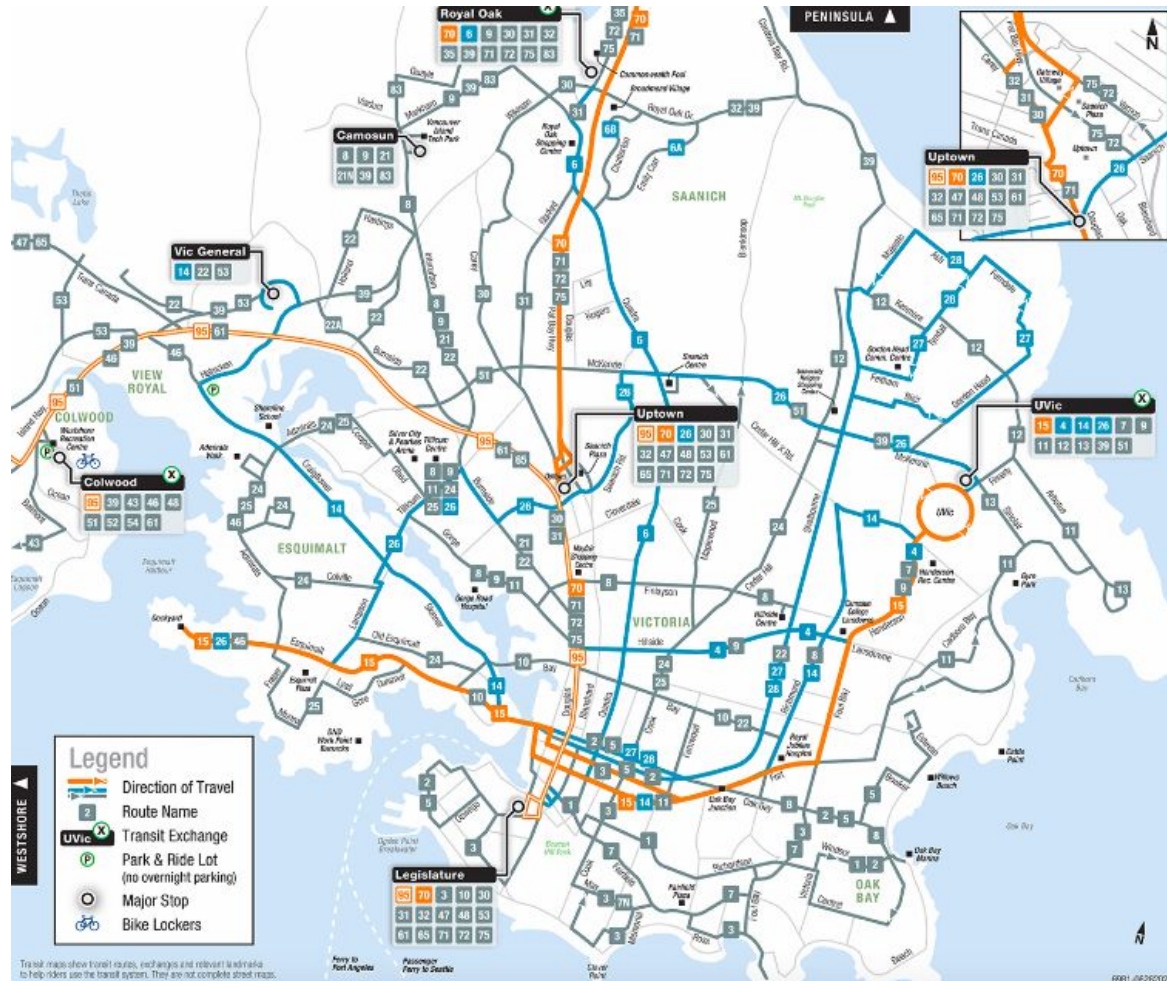
The BC transit bus routes that run near the Intrepid Hub are:

#6 along Quadra St.

#2, 5, 27, 28 along Pandora Street, one block away.

[Click this link](#) to see nearby bus stops and their accompanying routes.

[Click this link](#) for the BC Transit website, complete with schedules, routes, and image descriptions including the one to the right.



CYCLING



There are protected bike lanes along Pandora Ave., one block South from the Intrepid hub.

It can be busy to bike along Balmoral/Fisgard and Quadra St., and there is no bike lane, but sidewalks are available, though not recommended for high-speed.

There are **NO** bike locks near the building, although some choose to lock their bikes to nearby infrastructure.

There is **VERY** limited indoor bike storage, please see an Intrepid staff member for assistance.

WHEN YOU ARRIVE

When you arrive, you'll enter the building through the two front doors (pull doors) and you'll be in the lobby/ the box office.

For Fringe Cabaret, this is where you'll check in and have your button and ID checked, since this event does serve alcohol.



FRONT OF HOUSE STAFF & VOLUNTEERS

At the Box Office, you will meet Wren, the box office assistant, and in some cases Fringe Volunteers.

For Fringe Cabaret, you will see at least one Fringe Volunteer at the door.



THE LOBBY

For Fringe Cabaret, the lobby is one of two zones in which the event is taking place. The lobby specifically is where the bar will be, and a general mingle zone. (It will be more spacious than this, and a poster wall will be along the box office area.)



ADMISSION

Fringe buttons are your only required admission for Fringe Cabaret. Otherwise, the event is free to enter!



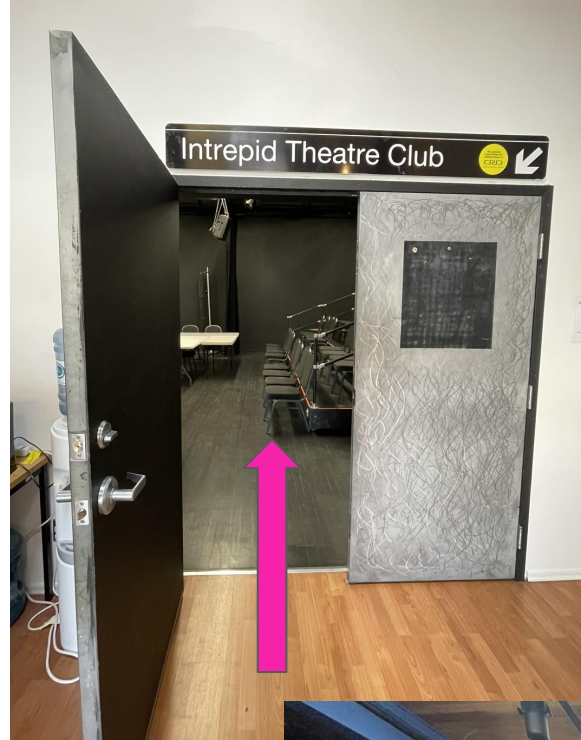
FRINGE BUTTON

ENTERING THE THEATRE

Inside the theatre is where the main Fringe Cabaret event will take place. If you are at the Hub to visit the box office, the following pages will be irrelevant to you.

A stage will be set up in the far corner of the performance space from the entrance.

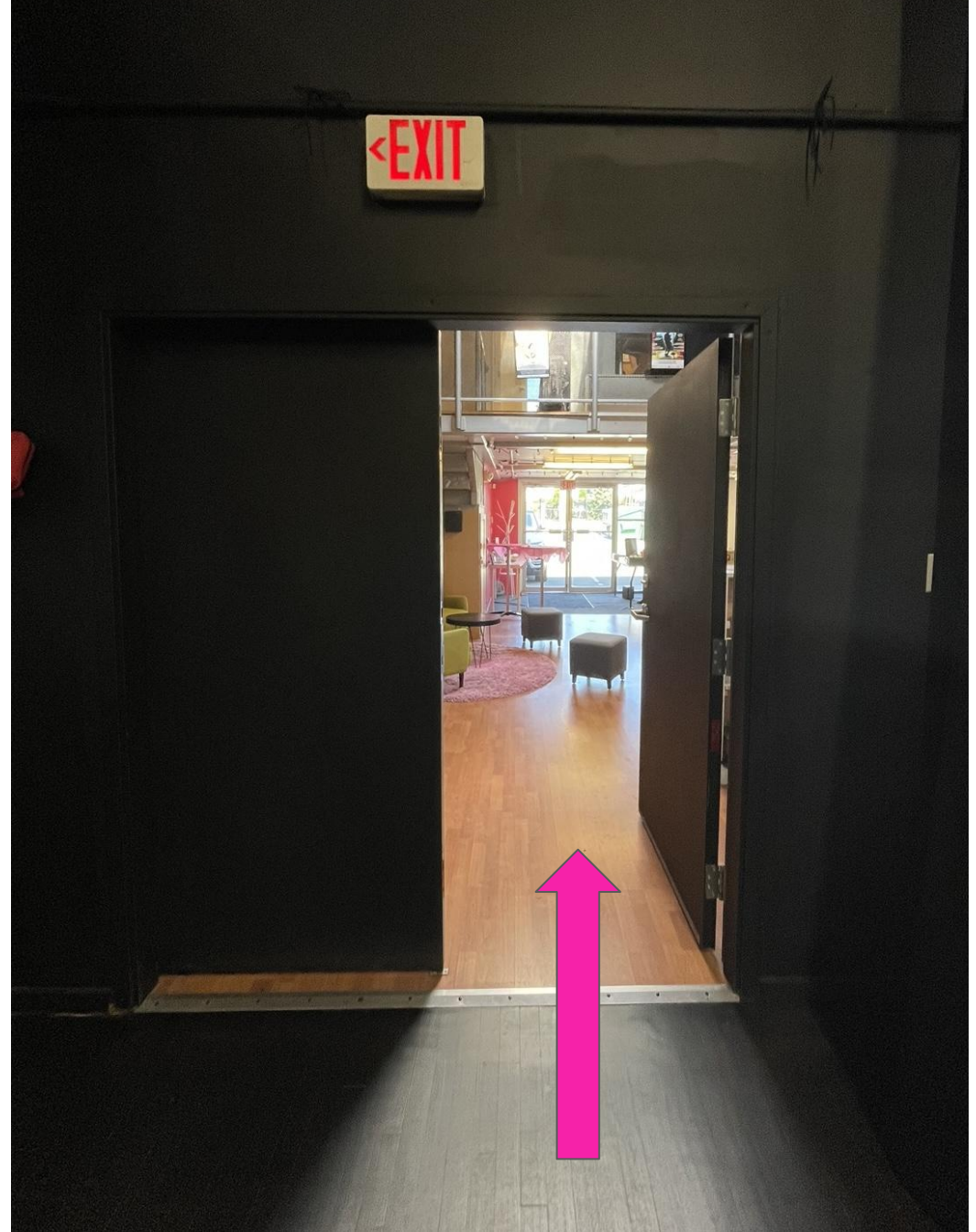
Cabaret tables (small round tables) will be set up around the space and on the risers to sit down at.



EXITING THE THEATRE

You are free to exit the theatre whenever you'd like, however alcohol cannot exit the front doors. Any kind of smoking or vaping must also happen outside the building on the sidewalk.

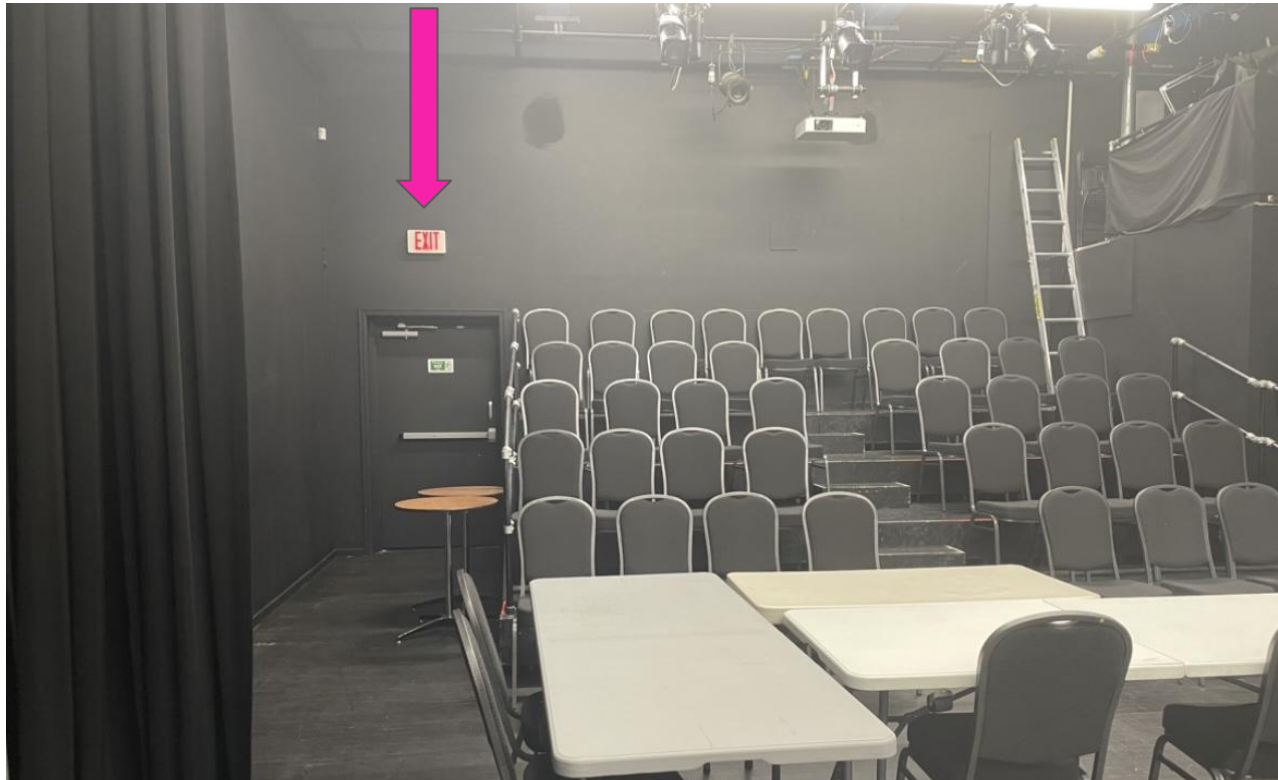
To exit the theatre, return the exact same way you came in. If the lobby is busy or you need assistance, a volunteer or staff will be there to assist.



EMERGENCY EXITS

There are **TWO** emergency exits. Through the front doors, and behind the audience on the opposite side of the theatre space as the entrance doors.

In an emergency situation, staff & volunteers will be able to indicate an exit. The official muster point is the parking lot outside the front entrance.



WASHROOMS

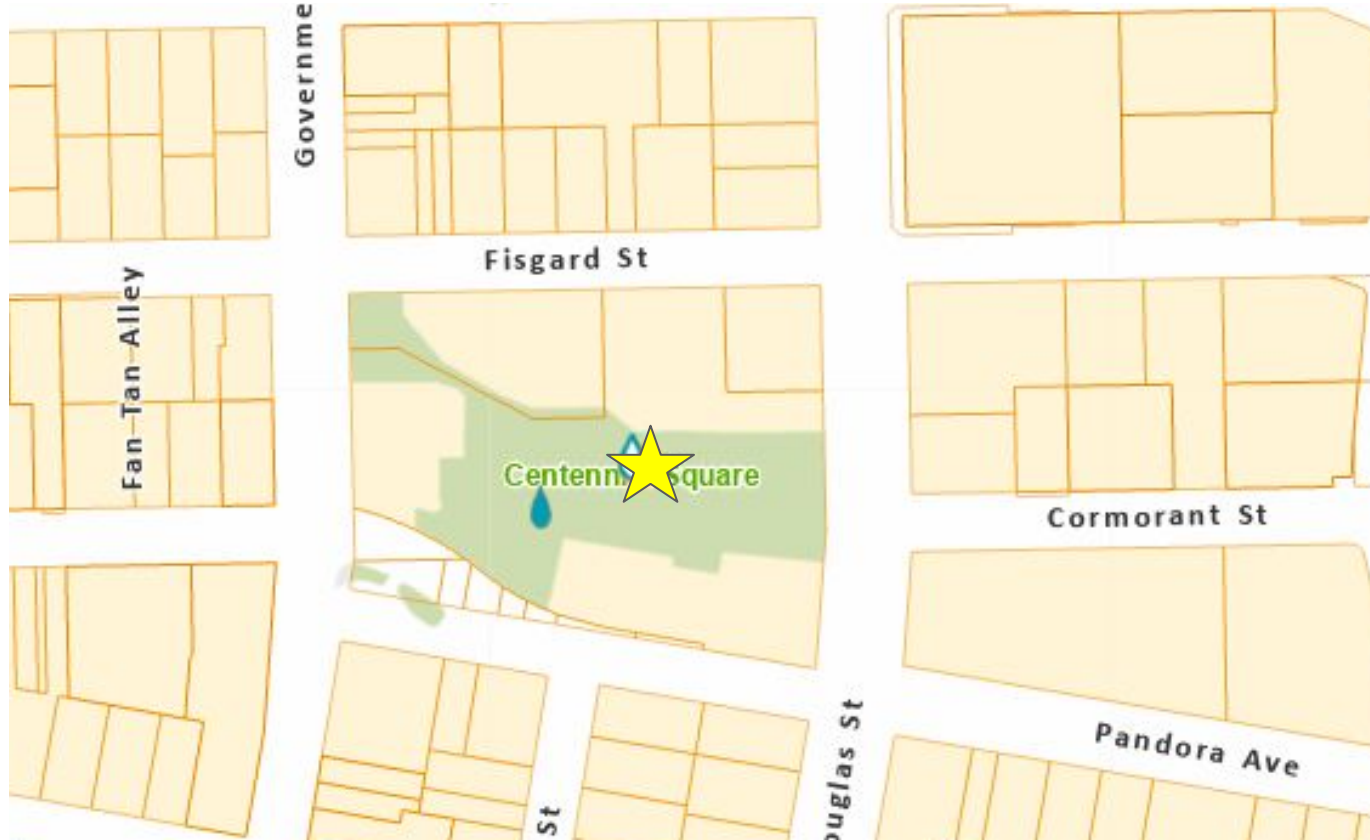
There are two accessible washrooms outside the theatre. One is larger and has a grab bar.



MISTING STATIONS

In case of extreme heat, Victoria has 13 misting stations for public use. The nearest station is at Centennial Square.

All misting stations can be found [here on this list](#).



DURING THE SHOW

At the show start time, the Front-of-House manager, an Intrepid staff member, or someone from the show will talk for a few minutes to welcome the audience and give some information about the show. They will mention any and all elements of the show that audience members could be sensitive to, like haze, strobe lighting, loud noises, etc. and any content warnings about material in the show that could be triggering or upsetting.

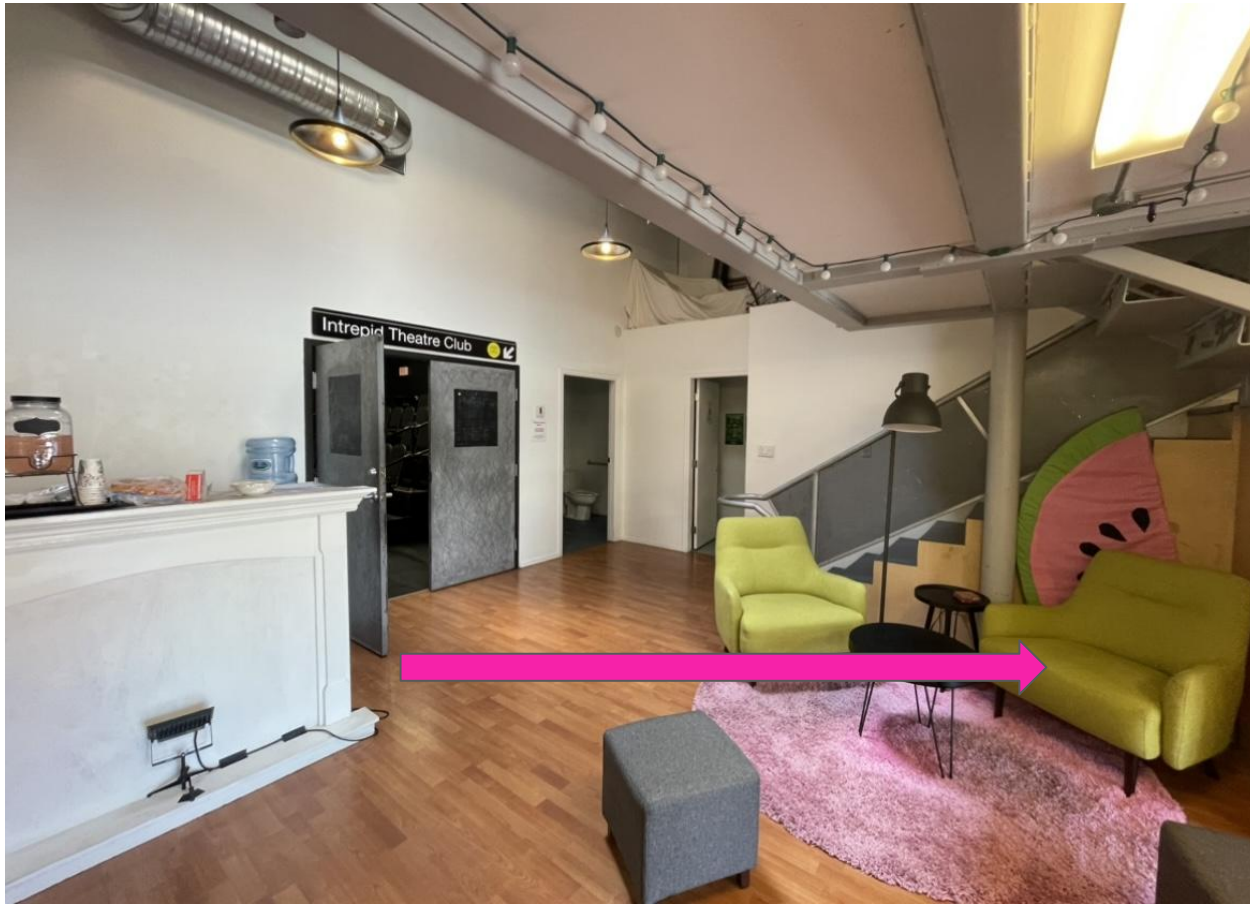
During the show, the performers will usually be on the stage, but may be in the audience area too. Any interaction with audience members will be prefaced in the front of house speech, and performers will seek consent before any interaction takes place.

During the show, the audience claps. Some patrons choose to wave their hands in the air should they not want to clap due to noise, and some choose to cover their ears if needed.



AFTER THE SHOW

When the show is over, you will exit the theatre into the lobby through the same doors you came through. The aisles may be busy while everyone is leaving their seats. From the lobby, exit through the main front doors (push to open), and you'll be back on Fisgard Street.



COVID SAFETY

Masks are strongly recommended for audiences, volunteers, Fringe staff and artists.

Artists are not required to wear masks during their performance.

Should you have any questions regarding this COVID-19 Safety & Communicable Disease Prevention Plan, please contact: Emmett MacMillen, Producer, Intrepid Theatre
(emmett@intrepidtheatre.com / 250-383-2663)

FRINGE ACCESSIBILITY PAGE

For information about accessibility measures at Victoria Fringe, such as relaxed performances, American Sign Language interpretation, and visual stories, visit our website <https://bit.ly/fringeaccess>.

WE HOPE YOU ENJOY YOUR VISIT!

If you have attended a show at this venue and have further suggestions to include or correct in this guide, please take a moment to fill out our brief [feedback form](#).

You can also share your thoughts with us through email at pa@intrepidtheatre.com or by phone at 250-383-2633.

We are committed to continuously improving our accessibility resources and appreciate your help.