

The Roxy Theatre Visual Guide



This venue guide is to help you prepare for your visit to The Roxy Theatre. It includes information about the theatre's location, a visual guide to the space, and what you can expect when you come to see a show.

TERRITORY ACKNOWLEDGEMENT

The Roxy Theatre is located in Victoria, BC, on the territories of the ləkʷəŋən people, now known as the Songhees and Esquimalt Nations.

For further information, please visit

<https://intrepidtheatre.com/land-acknowledgement-resources/>



MAP

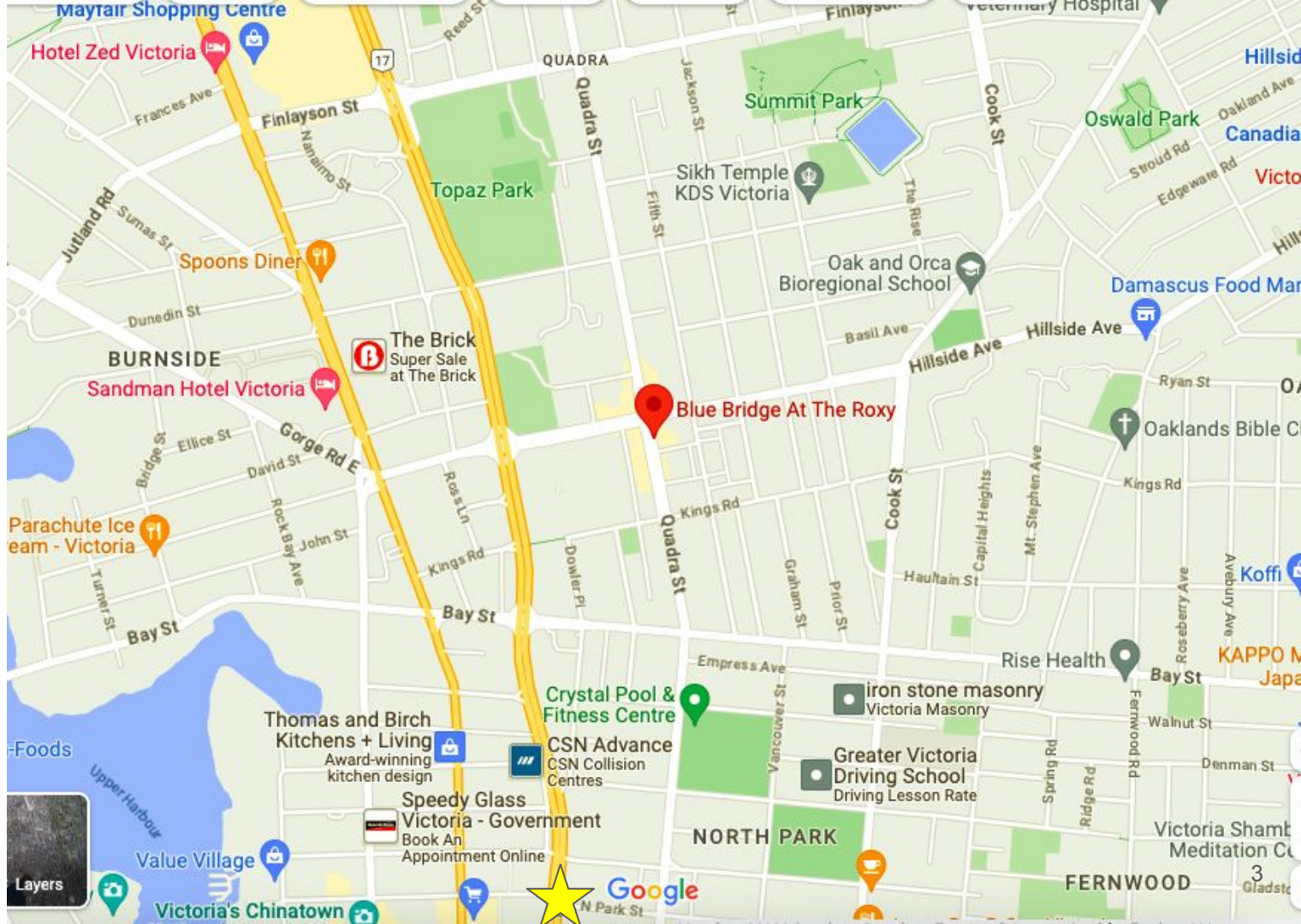
[Click on this link to view on Google Maps.](#)



=

INTREPID
THEATRE BOX
OFFICE
(2-1609 Blanshard St)

Although not entirely pictured on this map, the Intrepid box office is a 20 min walk South down Quadra St.



PERFORMANCES AT THE ROXY THEATRE 2023

★ ALL ACCESSIBILITY MATERIAL AVAILABLE FROM FRONT-OF-HOUSE AT THE VENUE AND VICTORIAFRINGE.COM

- ***The Big Wail*** - Jayne Walling

Shows: Saturday August 26th 12:00pm, Wednesday August 30th 6:00pm, Thursday August 31st 6:00pm, Friday September 1st 5:45pm, Sunday September 3rd 12:00pm.

- ***Pico and the Golden Lagoon*** - Pico's Puppet Palace

Shows: Friday August 25th 6:00pm, Saturday August 26th 1:45pm, Friday September 1st 7:30pm, Saturday September 2nd 12:00pm (relaxed performance), Sunday September 3rd 1:45pm.

- ***Carpet*** - Timetheft Theatre Company

Shows: Thursday August 24th 8:00pm, Saturday August 26th 3:45pm, Sunday August 27th 12:00pm, Tuesday August 29th 6:00pm, Saturday September 2nd 3:45pm

- ***Celexia*** - Citizen Theatre

Shows: Thursday August 24th 6:15pm, Sunday August 27th 2:00pm, Thursday August 31st 7:45pm, Saturday September 2nd 1:45pm, Sunday September 3rd 3:45pm.

- ***Renfield or, Dining at the Bug House*** - Not Kansas

Shows: Friday August 25th 8:00pm, Sunday August 27th 4:00pm, Tuesday August 29th 8:00pm, Wednesday August 30th 7:45pm, Friday September 1st 9:30pm.

PARKING

There is **no** designated parking for the Roxy Theatre. There is metered street parking along Quadra Street, which is free after 6 PM.

Take a note of which spot you park at, there's a number on a stanchion and make sure that you have your license plate number ready.

The parking can also be paid for with the ParkVictoria app (Credit only). Cash is an option at the paystation.



TRANSIT

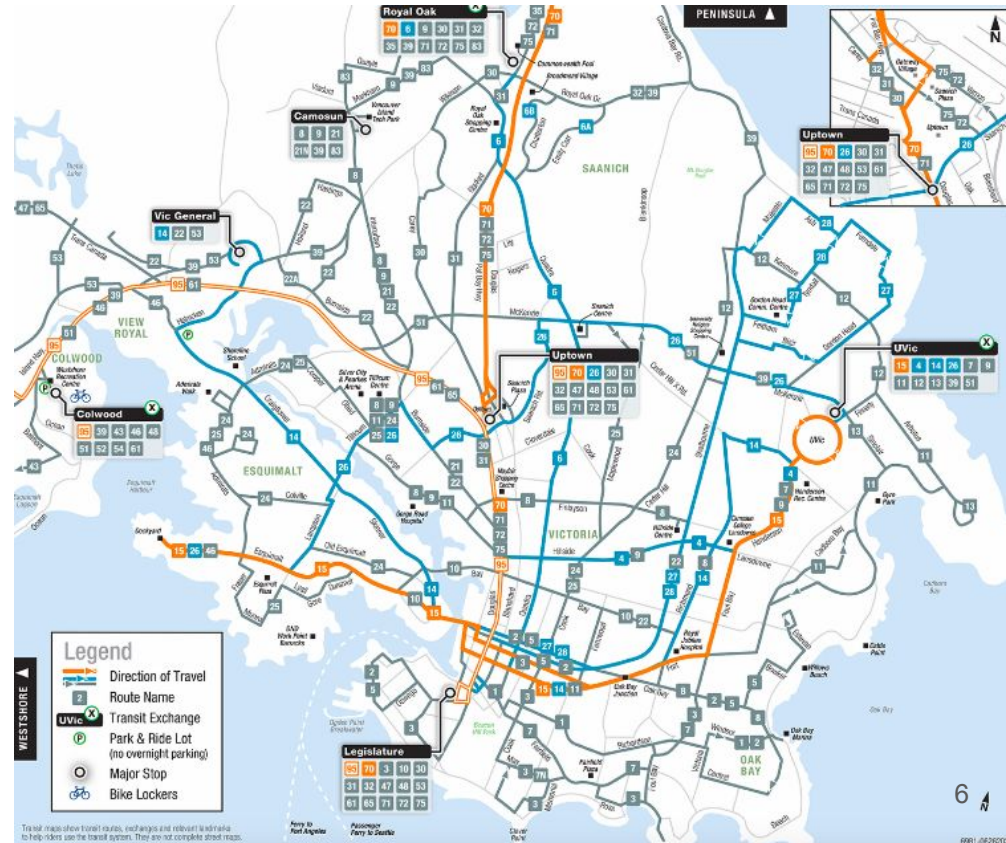
The BC transit bus routes that run near the Roxy Theatre are:

#6 along Quadra St.

#4, 9 along Hillside Ave.

[Click this link](#) to see nearby bus stops and their accompanying routes.

[Click this link](#) for the BC Transit website, complete with schedules, routes, and image descriptions including the one to the right.



CYCLING



It can be busy to bike along Quadra St., and there is no bike lane, but sidewalks are always available, though not recommended for high-speed.

There are two bicycle racks in front of the theatre (pictured). One on either side of the entrance.

[Click this link](#) to find your safest cycling route to the Metro Studio theatre from your location.



THE 'FRINGE ON THE HOUSE' PROGRAM

Free tickets are available to all companions to patrons who identify as a part of the d/Disability community. Just call our box office at 250-383-2663 and ask for a companion ticket when booking.

We are also offering a new 'Fringe on the House' program this year. If for any reason the cost of a ticket is beyond your means, we have a select number of tickets per show available for free, no questions asked. Just call our box office at 250-383-2663 to book.

Fringe on the House tickets are limited to one ticket per person, per show, up to a maximum of 5 shows.

All tickets need to be booked in advance. To guarantee a Fringe on the House or companion ticket, tickets must be booked before 3pm for weekday shows, and 12pm for weekend shows.

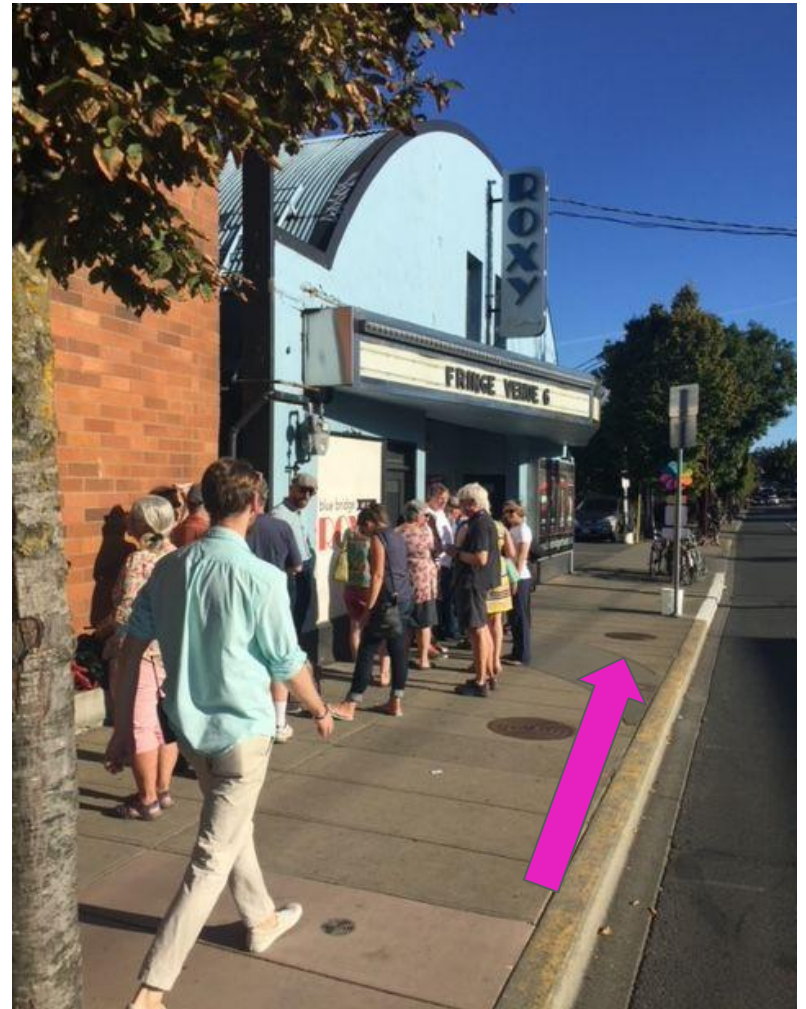
There are two ways to book these tickets:

1. **In person.** The in person box office is located at 2-1609 Blanshard Street.
 - a. Box Office is open 12:30pm-5pm starting August 1st, and then everyday from Monday, August 21st to Sunday, September 3 from 12:30-6:30pm. Wren and other festival staff members will be there to offer support.
2. **By phone.** If you prefer, you can call the box office at 250 383 2663 during the above Box Office hours.

WHEN YOU ARRIVE

Line-ups for shows at the Roxy will run alongside the left of the building.

This is where you will wait to enter the theatre.



TICKETS AND FRINGE BUTTONS

All tickets are online and in advance at www.VictoriaFringe.com. You will receive an email with a QR code that has ALL your purchased tickets for the Fringe (this QR code will update if you purchase more tickets later).

Once you've lined up, a Fringe line concierge will come and check you are in line for the correct show and that you have your Fringe button.

If you purchased your Fringe button online, you can show proof of purchase and the volunteer will give you a button. If you have not purchased a button, you will be able to do so at the venue without losing your spot in line.

Your ticket will be scanned by a volunteer when the doors to the venue open.



FRINGE BUTTON

WHEN YOU ARRIVE

Once the venue opens, you will enter through the doors and the Box Office will be inside on the right.

There will be Fringe staff and volunteers there to greet you.



WHEN YOU ARRIVE



There is a small wooden lip at the entrance doors, a low profile rubber mat outdoors and the inside lobby flooring is carpet.



FRONT OF HOUSE STAFF & VOLUNTEERS



Front of House Manager
Kim Plough

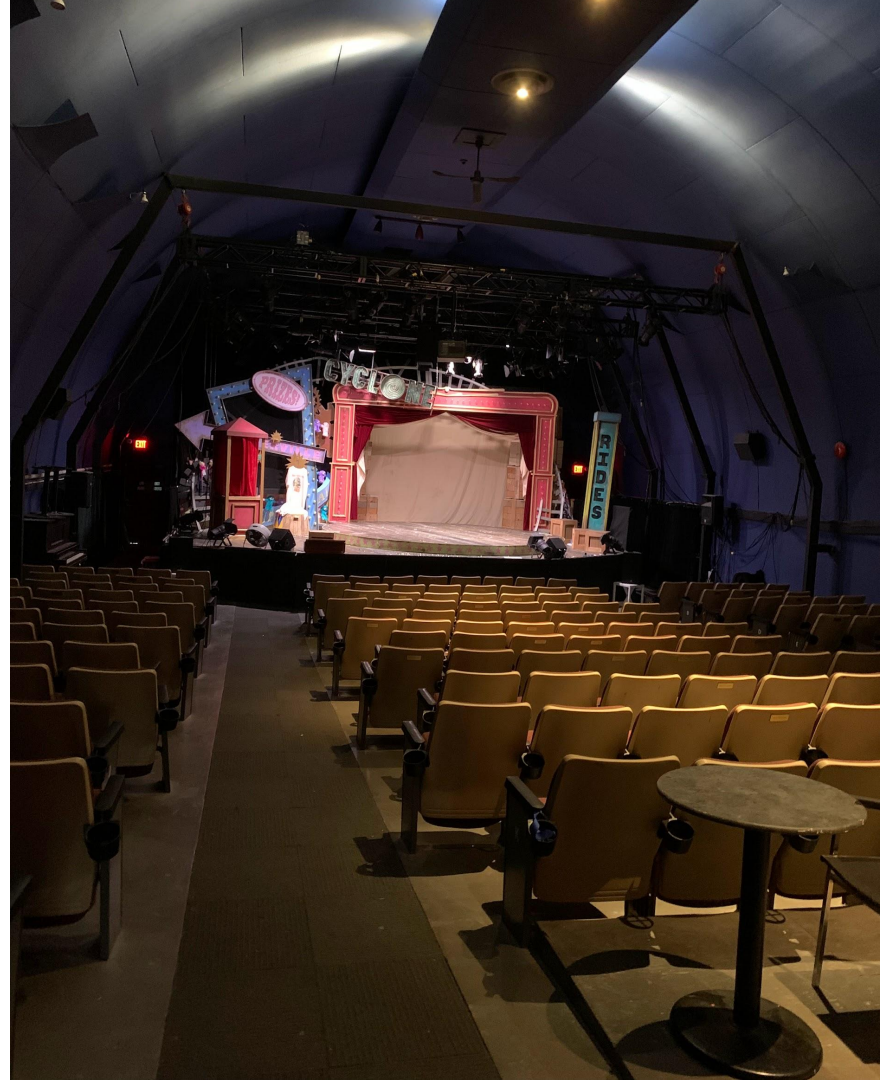
At the Box Office, you will meet Kim (she/her) the front of house manager, and Fringe volunteers, who are responsible for showing you to the theatre and answering any questions you have.

THEATRE SPACE AND PRIORITY SEATING

- The Roxy Theatre space can seat 221 people.
- An area is reserved near the left entrance for audience members using wheelchairs or other mobility devices.
- We recommend arriving 25 minutes early if you need an accessible seat so our Front of House staff can support you.

ENTERING THE THEATRE

There are 2 aisles in the audience with 3 seating areas: left, centre, and right.



ENTERING THE THEATRE

The flooring changes as you enter the performance space.

The lobby carpet ends and a low profile black carpet runs the length of the theatre aisles.



ENTERING THE THEATRE

There is priority seating for patrons using wheelchairs or mobility aids near the left entrance to the theatre.

A Fringe volunteer can help you find this.



WASHROOMS



There are 2 washrooms in the lobby, one on the left and one on the right.

Each of them are all gender for the Festival.

The washroom on the left side (pictured) will be propped open, and has multiple stalls, including an accessible stall with a grab bar.



WASHROOMS

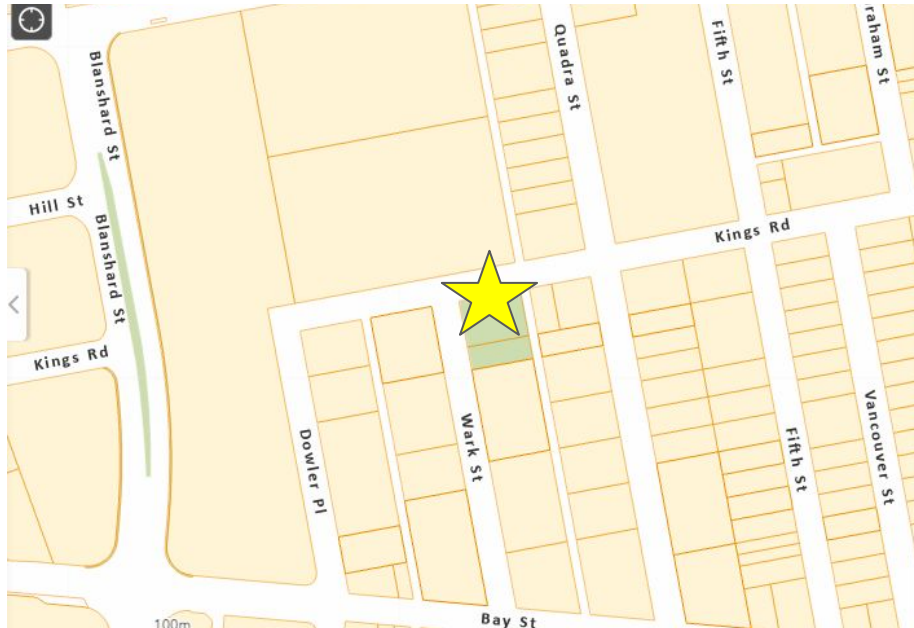
The washroom on the right side (as you walk in) has urinals and an individual stall with a grab bar.



MISTING STATIONS

In case of extreme heat, Victoria has 13 misting stations for public use. The nearest station is on the corner of Wark St and Kings Rd, at the community park hub.

All misting stations can be found [here on this list.](#)



EMERGENCY EXITS

The main emergency exit is straight back into the main lobby and out the front doors. The doors behind the stage are NOT an emergency exit for audience.

The front-of-house Manager and/or a Fringe volunteer will be able to direct you out of the building in the case of emergency.

DURING THE SHOW

At the show start time, the Front-of-House manager, an Intrepid staff member, or someone from the show will talk for a few minutes to welcome the audience and give some information about the show. They will mention any and all elements of the show that audience members could be sensitive to, like haze, strobe lighting, loud noises, etc. and any content warnings about material in the show that could be triggering or upsetting.

Fringe festival performances will start promptly on time. Some shows may allow latecomers, some may allow audiences to come and go throughout the show, and some may not admit latecomers at all—it varies from show to show. See individual show details at victoriafringe.com

During the show, the performers will usually be on the stage, but may be in the audience area too. Any interaction with audience members will be prefaced in the front of house speech, and performers will seek consent before any interaction takes place.

At the end of the show, the performers will bow while the audience claps. Some patrons choose to wave their hands in the air should they not want to clap due to noise, and some choose to cover their ears if needed.



COVID SAFETY

Masks are strongly recommended for audiences, volunteers, Fringe staff and artists.

Artists are not required to wear masks during their performance.

Should you have any questions regarding this COVID-19 Safety & Communicable Disease Prevention Plan, please contact: Emmett MacMillen, Producer, Intrepid Theatre (emmett@intrepidtheatre.com / 250-383-2663)

AFTER THE SHOW

If there is an event after the show, like a reception or a discussion with the artists, it will be in the theatre, and there will usually be an announcement to inform the audience either in the front of house speech or directly after the show.

At Fringe, people sometimes thank the artist or ask them questions afterward. The artist will let audiences know if they want to chat outside the theatre or inside depending on how much they have to pack up. They might share further info about their show or how to get in touch with them in the future.

Artists also sometimes have merchandise for sale on the stage or in the lobby.

When the show is over, you will exit the theatre into the lobby through the same door you came through. The area may be busy while everyone is leaving their seats. From the lobby, exit through the main front door (push to open), and you'll be back on Quadra St.

FRINGE ACCESSIBILITY PAGE + FEEDBACK

For information about accessibility measures at Victoria Fringe, such as relaxed performances, American Sign Language interpretation, and visual stories, visit our website <https://bit.ly/fringeaccess>.

WE HOPE YOU ENJOY YOUR VISIT!

If you have attended a show at this venue and have further suggestions to include or correct in this guide, please take a moment to fill out our brief [feedback form](#).

You can also share your thoughts with us through email at pa@intrepidtheatre.com or by phone at 250-383-2633.

We are committed to continuously improving our accessibility resources and appreciate your help.