

The VCM Wood Hall Visual Guide



VICTORIA
FRINGE
FESTIVAL

This venue guide is to help you prepare for your visit to the VCM Wood Hall Auditorium. It includes information about the theatre's location, a visual guide to the space, and what you can expect when you come to see a show.

TERRITORY ACKNOWLEDGEMENT

The Victoria Conservatory of Music including the Wood Hall is located in Downtown Victoria, BC, on the territories of the lək̓ʷəŋən people, now known as the Songhees and Esquimalt Nations.

For further information, please visit

<https://intrepidtheatre.com/land-acknowledgement-resources/>



ABOUT

The 100-seat Robin and Winifred Wood Recital Hall, formerly the Spencer Chapel, provides space for small-scale music performances, solo recitals, lectures, and rehearsals. It hosts a unique set-up on its stage for Fringe shows every year.

LOCATION

The VCM Wood Hall is located at **900 Johnson St, Victoria, BC V8V 3N4 ləkʷəŋən territory.**

Information on bus routes on page 8.

PERFORMANCES AT THE VCM WOOD HALL 2023

★ ALL ACCESSIBILITY MATERIAL AVAILABLE FROM FRONT-OF-HOUSE AT THE VENUE AND VICTORIAFRINGE.COM

- ***Sadec 1965: A Love Story*** - From Ego to Soul

Shows: Thursday August 24th 7:00pm, Friday August 25th 6:00pm, Saturday August 26th 4:15pm, Sunday August 27th 1:30pm.

- ***Dave and John's Mixtape*** - Dave Dutkewich and Jon Jeffery

Shows: Thursday August 24th 5:00pm, Friday August 25th 8:15pm, Saturday, August 26th 2:15pm, Sunday August 27th 3:45pm, Saturday September 2nd 4:30pm.

- ***Jimmy Hogg: The Potato King*** - Jimmy Hogg

Shows: Tuesday August 29th 6:30pm, Thursday August 31st 6:30pm, Friday September 1st 6:00pm, Saturday September 2nd 12:15pm, Sunday September 3rd 1:00pm.

- ***Aliya Kanani: Where You From, From?*** - Spoon Fulla Sugar

Shows: Thursday August 24th 8:00pm, Friday August 25th 6:30pm, Saturday August 26th 1:15pm, Sunday August 27th 12:15pm, Wednesday August 30th 9:15pm.

VICTORIA
FR!NGE
FESTIVAL

THE 'FRINGE ON THE HOUSE' PROGRAM

Free tickets are available to all companions to patrons who identify as a part of the d/Disability community. Just call our box office at 250-383-2663 and ask for a companion ticket when booking.

We are also offering a new 'Fringe on the House' program this year. If for any reason the cost of a ticket is beyond your means, we have a select number of tickets per show available for free, no questions asked. Just call our box office at 250-383-2663 to book.

Fringe on the House tickets are limited to one ticket per person, per show, up to a maximum of 5 shows.

All tickets need to be booked in advance. To guarantee a Fringe on the House or companion ticket, tickets must be booked before 3pm for weekday shows, and 12pm for weekend shows.

There are two ways to book these tickets:

1. **In person.** The in person box office is located at 2-1609 Blanshard Street.
 - a. Box Office is open 12:30pm-5pm starting August 1st, and then everyday from Monday, August 21st to Sunday, September 3 from 12:30-6:30pm. Wren and other festival staff members will be there to offer support.
2. **By phone.** If you prefer, you can call the box office at 250 383 2663 during the above Box Office hours.

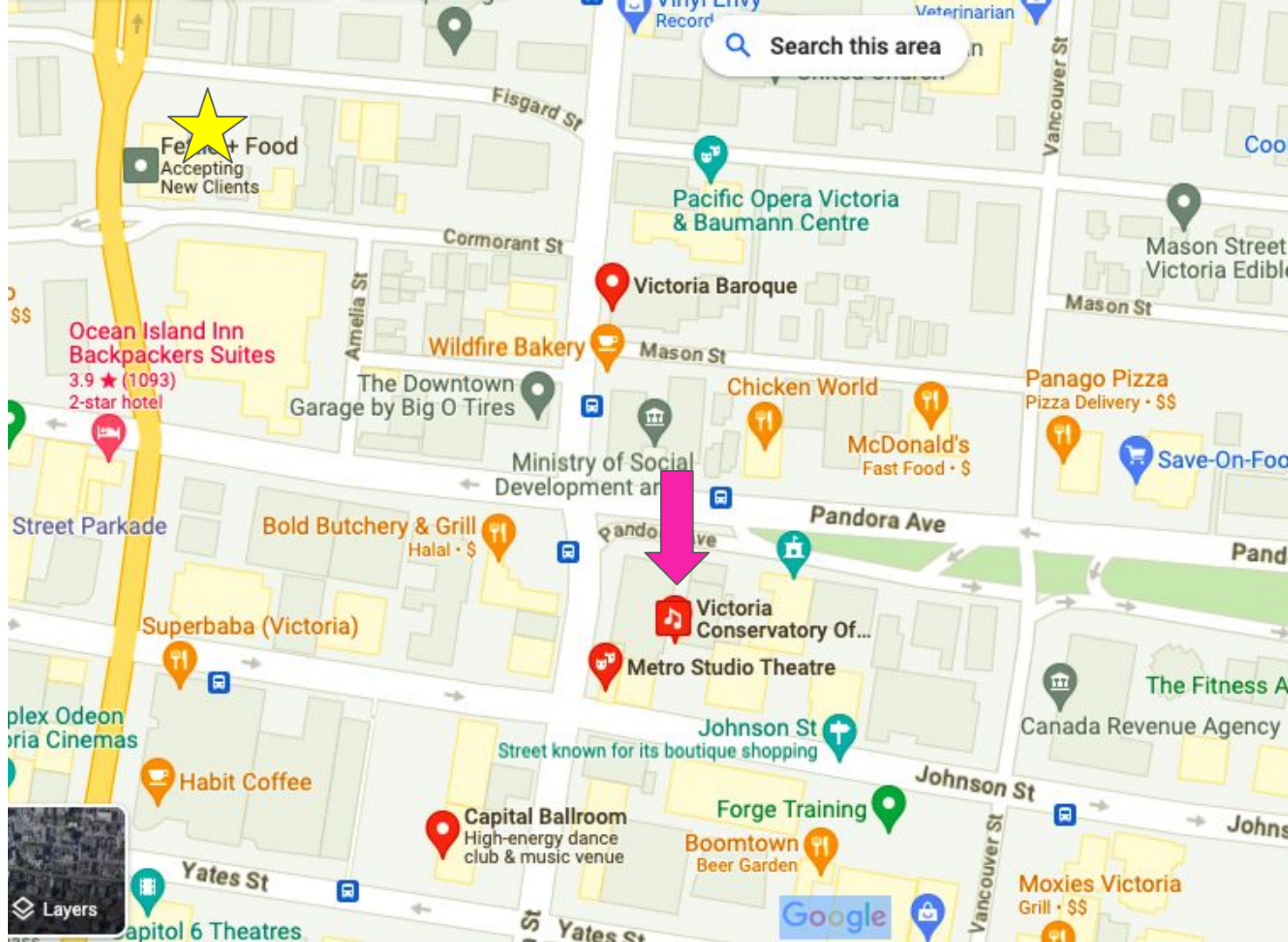
SITE MAP

[Click on this link to view on Google Maps.](#)



=

INTREPID THEATRE
BOX OFFICE
(2-1609 Blanshard
St)



PARKING



There is **no** designated parking for the VCM Wood Hall.

There is **street parking** along Johnson Street as it runs down both sides of Quadra St, which is free after 6pm.

There is also a paid parking lot on the opposite corner of Quadra & Johnson.

The nearest **parkade** is the Johnson St. Parkade (entrance at 750 Johnson St.).



TRANSIT

The BC transit bus routes that run near the VCM are:

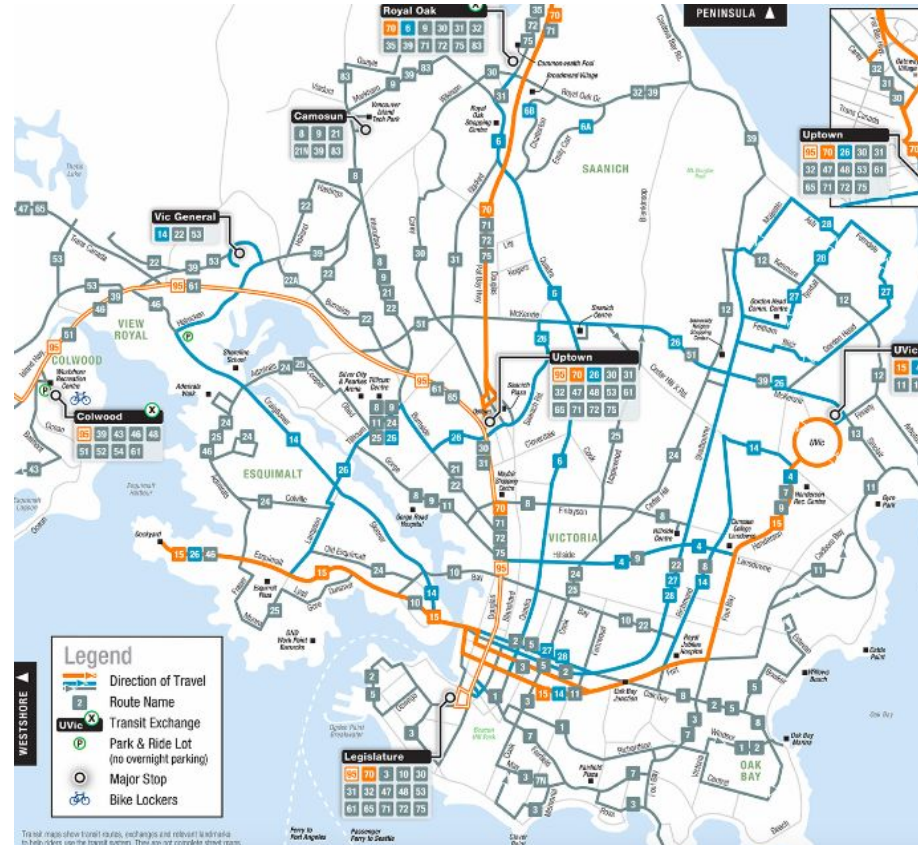
#6 along Quadra St.

#2, 24, 25, 27, 28 along Johnson St.
(Johnson is a one-way street going away from downtown. In the opposite direction, these routes run on Yates or Pandora.)

Many other routes also stop within walking distance of the Metro along Pandora, Yates, Fort and Douglas Streets.

[Click this link](#) to see nearby bus stops and their accompanying routes.

[Click this link](#) for the BC Transit website, complete with schedules, routes, and image descriptions including the one to the right.



CYCLING

There are protected bike lanes along Pandora Ave., one block North from the VCM Wood Hall. It can be busy to bike along Quadra St., and there is no bike lane, but sidewalks are always available, though not recommended for high-speed.

There are bike racks available outside the entrance to the VCM, although the gate locks overnight and all bikes must be removed after the show.

[Click this link](#) to find your safest cycling route from your location.



THEATRE SPACE AND PRIORITY SEATING

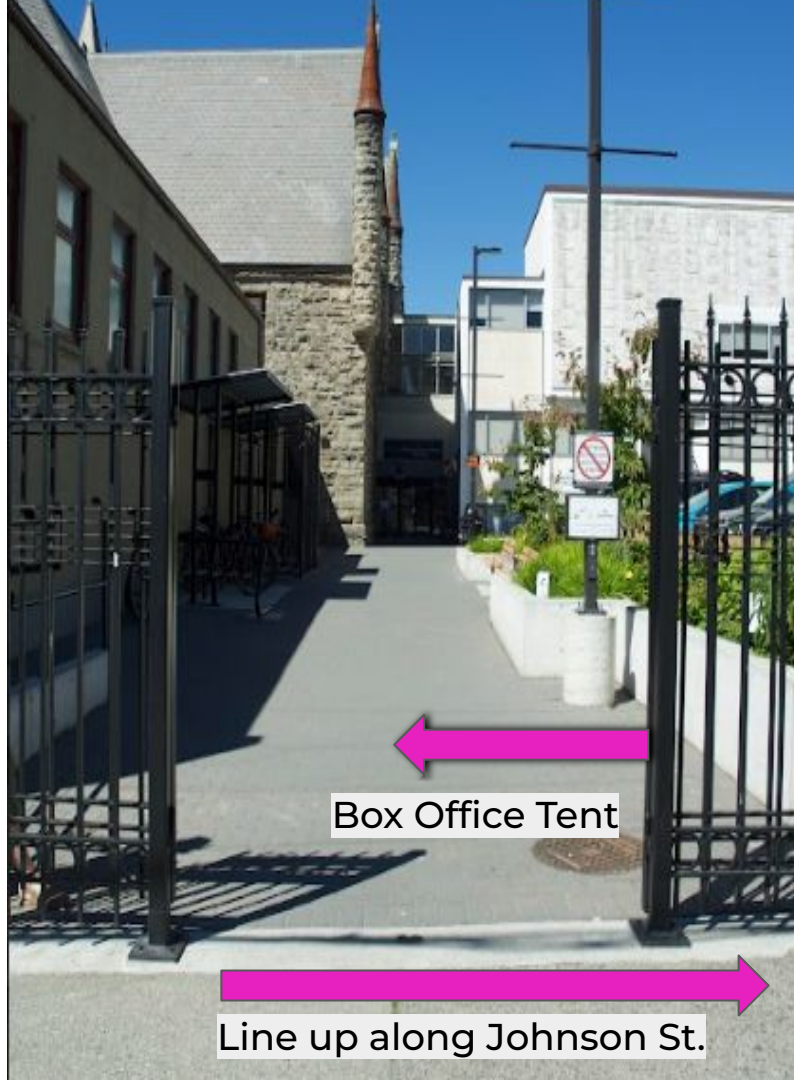
- The VCM Wood Hall space can seat 90 people.
- We recommend arriving 25 minutes early if you need an accessible seat so our Front of House staff can support you.

WHEN YOU ARRIVE

The entrance to Wood Hall is on Johnson street, at the black gates.

You will see a Fringe tent on your left when you face the Victoria Conservatory of Music building.

Audiences will line up along Johnson Street where a Fringe volunteer will come to greet you.



TICKETS AND FRINGE BUTTONS

All tickets are online and in advance at www.VictoriaFringe.com. You will receive an email with a QR code that has ALL your purchased tickets for the Fringe (this QR code will update if you purchase more tickets later).

Once you've lined up, a Fringe line concierge will come and check you are in line for the correct show and that you have your Fringe button.

If you purchased your Fringe button online, you can show proof of purchase and the volunteer will give you a button. If you have not purchased a button, you will be able to do so at the venue without losing your spot in line.

Your ticket will be scanned by a volunteer when the doors to the venue open.



FRINGE BUTTON

ENTERING THE THEATRE

A volunteer will help guide you to the theatre.

Once you pass through the automatic doors, you will see a courtyard.

On the right is a ramp and on the left are four steps up to the entrance to the theatre.



FRONT OF HOUSE STAFF & VOLUNTEERS



Front of House Manager
Madi Collins

In the Box Office, you will meet Madi (she/her) the front of house manager, and Fringe volunteers, who are responsible for showing you to the theatre and answering any questions you have.

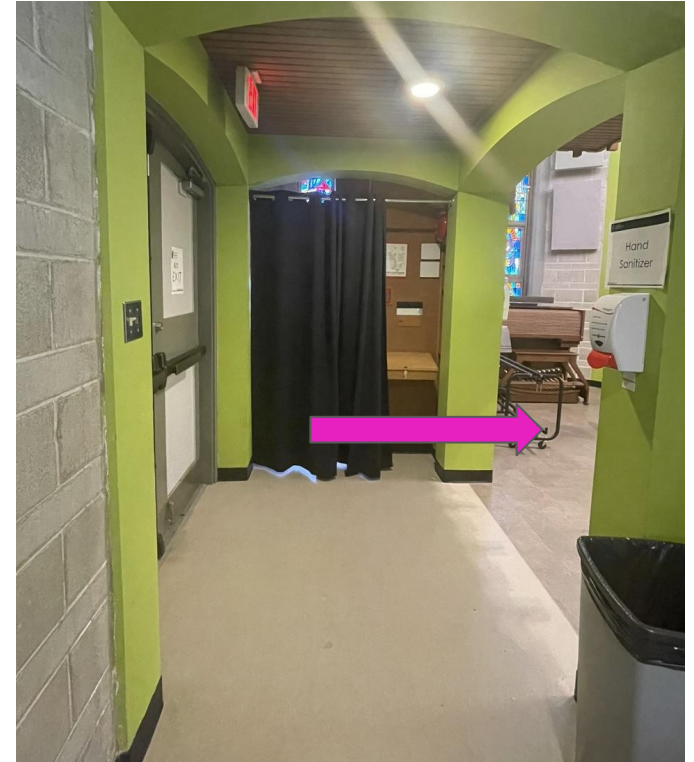
ENTERING THE THEATRE

The entrance to the theatre is through 2 double doors which will be open.

There is then one single door directly to the left with a small lip leading into a green hallway.



At the end of the hallway on the right is the entrance to the theatre space



INSIDE THE THEATRE

There are 2 sections of seating- on either side with a centre aisle.

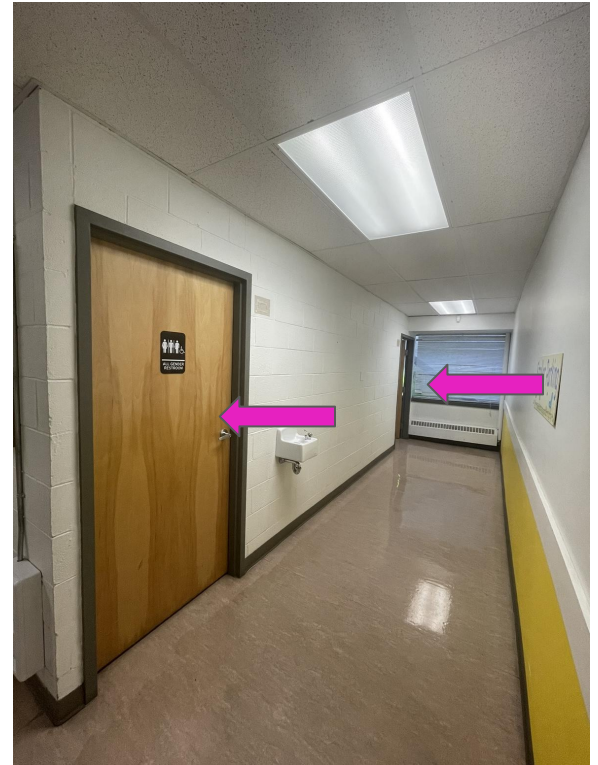
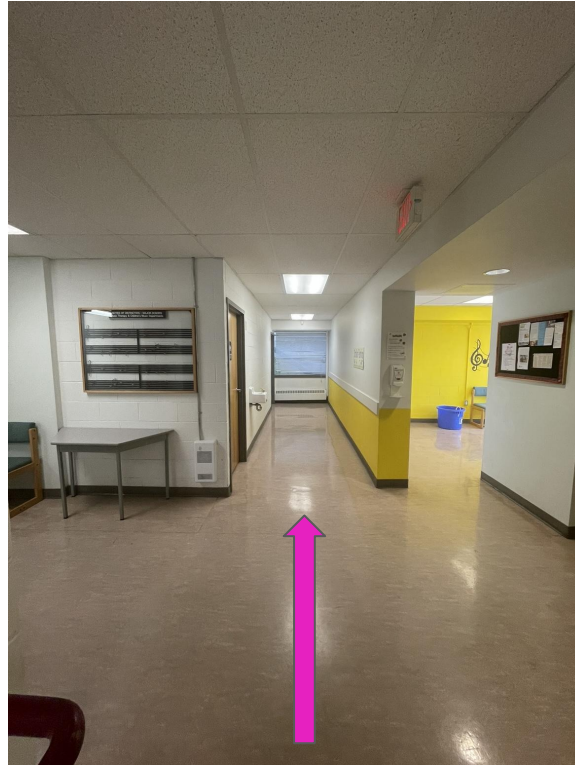
The stage may look different depending on the show, however there will be black curtains and lights hanging.

For seating for audiences using mobility devices, chairs will be removed in the first row.



ACCESSIBLE WASHROOMS

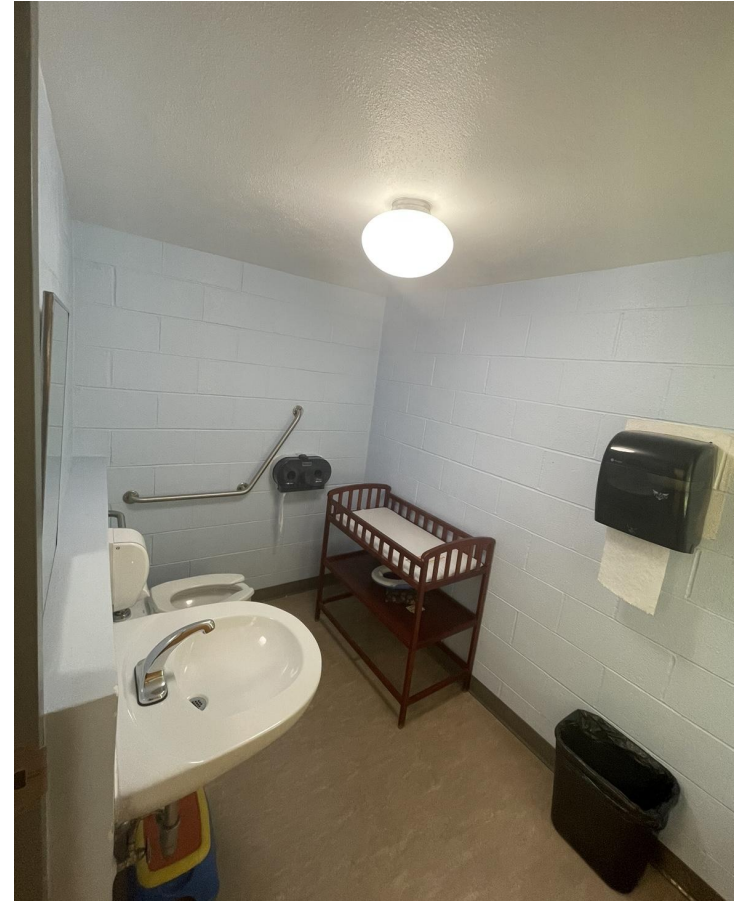
The accessible washrooms are located back in the lobby, down a ramp on the right-hand side as you enter from the street. One is large enough to be wheelchair accessible, and the other is only ground floor.



ACCESSIBLE WASHROOMS



Both washrooms have grab bars and single toilets. The smaller bathroom (right) also has a changing table.

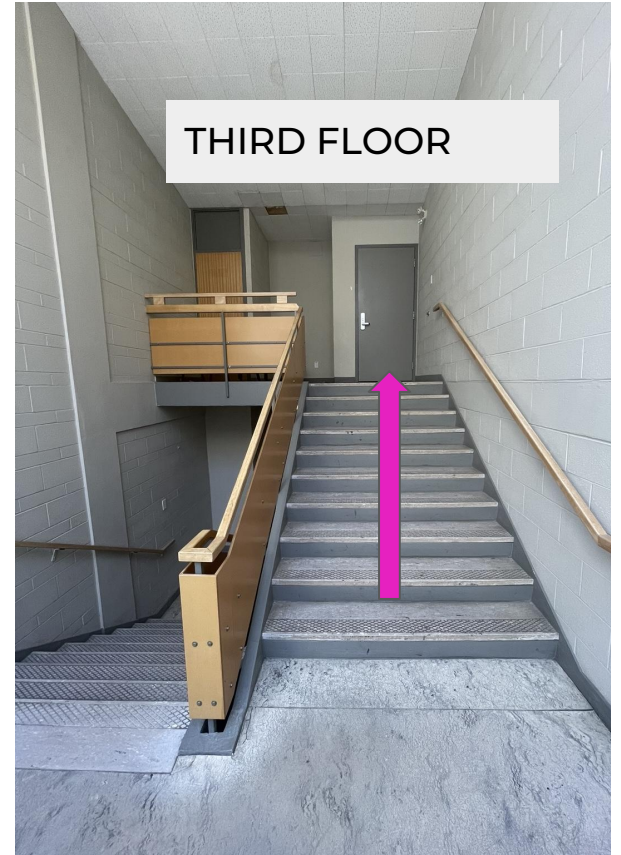


NON-ACCESSIBLE WASHROOMS

When you approach the theatre entrance, there are two flights of stairs leading upstairs to the 3rd floor.

On the left side of the 3rd floor are the two washrooms.

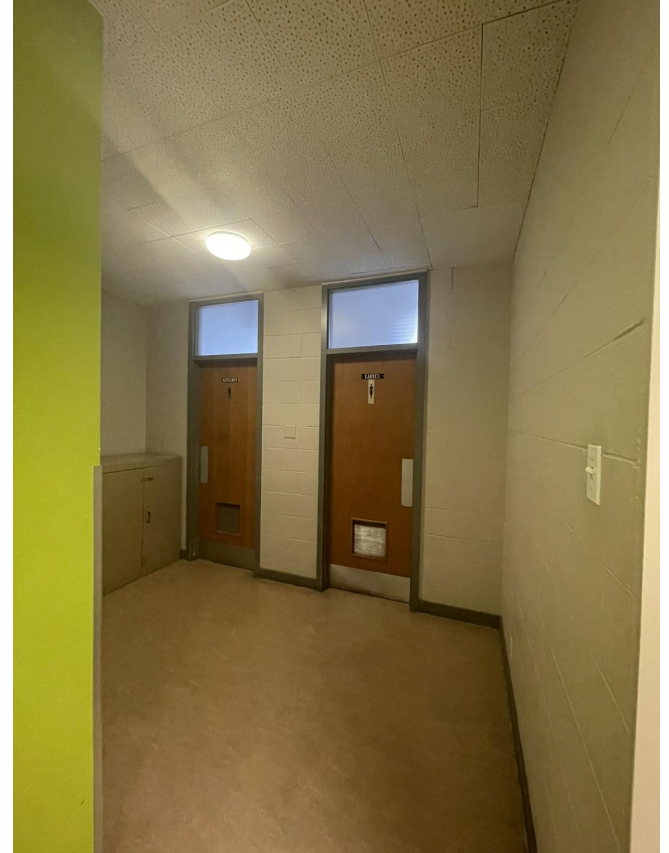
Washrooms are all genders for Fringe.



NON-ACCESSIBLE WASHROOMS



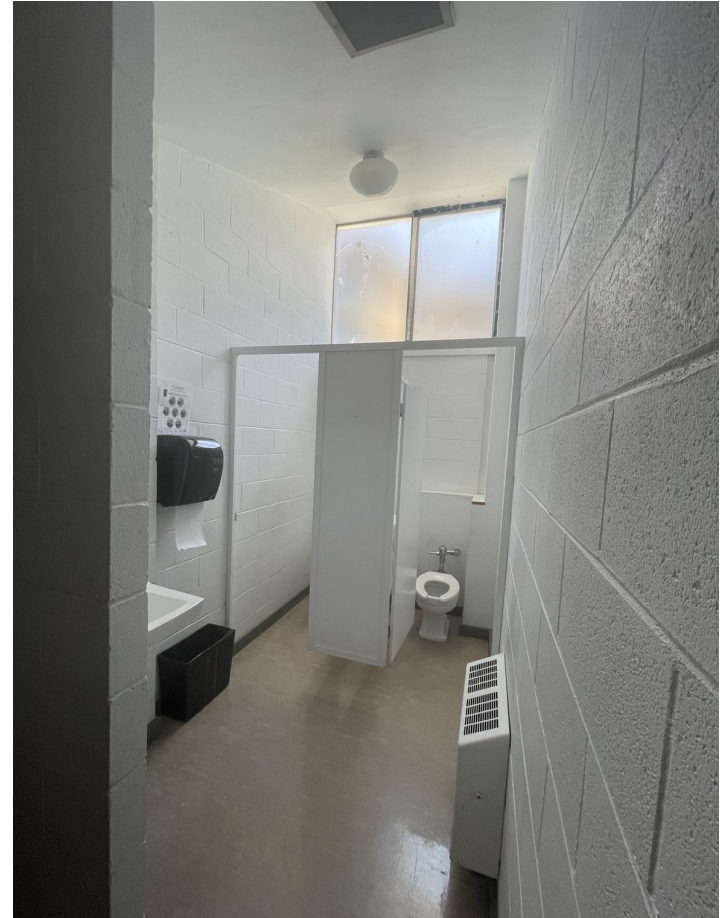
A small wall divides the bathrooms from the rest of the floor, where music classes often take place. Washrooms are gendered, yet trans-inclusive. Signage will reflect this on the day.



NON-ACCESSIBLE WASHROOMS



Both washrooms have two stalls and two individual toilets. Neither washrooms have any urinals.



MISTING STATIONS

In case of extreme heat, Victoria has 13 misting stations for public use. The nearest station is at Victoria Fire Hall No. 1

All misting stations can be found [here on this list.](#)



DURING THE SHOW

At the show start time, the Front-of-House manager, an Intrepid staff member, or someone from the show will talk for a few minutes to welcome the audience and give some information about the show. They will mention any and all elements of the show that audience members could be sensitive to, like haze, strobe lighting, loud noises, etc. and any content warnings about material in the show that could be triggering or upsetting.

Fringe festival performances will start promptly on time. Some shows may allow latecomers, some may allow audiences to come and go throughout the show, and some may not admit latecomers at all—it varies from show to show. See individual show details at intrepidtheatre.com/fringe

During the show, the performers will usually be on the stage, but may be in the audience area too. Any interaction with audience members will be prefaced in the front of house speech, and performers will seek consent before any interaction takes place.

At the end of the show, the performers will bow while the audience claps. Some patrons choose to wave their hands in the air should they not want to clap due to noise, and some choose to cover their ears if needed.



COVID SAFETY

Masks are strongly recommended for audiences, volunteers, Fringe staff and artists.

Artists are not required to wear masks during their performance.

Should you have any questions regarding this COVID-19 Safety & Communicable Disease Prevention Plan, please contact: Emmett MacMillen, Producer, Intrepid Theatre
(emmett@intrepidtheatre.com / 250-383-2663)

AFTER THE SHOW

If there is an event after the show, like a reception or a discussion with the artists, it will be in the theatre, and there will usually be an announcement to inform the audience either in the front of house speech or directly after the show.

At Fringe, people sometimes thank the artist or ask them questions afterward. The artist will let audiences know if they want to chat outside the theatre or inside depending on how much they have to pack up. They might share further info about their show or how to get in touch with them in the future.

Artists also sometimes have merchandise for sale on the stage or in the lobby.

When the show is over, you will exit the theatre into the lobby through the same doors you came through. The aisles may be busy while everyone is leaving their seats. From the lobby, exit through the main front doors, and you'll be back on Johnson Street.

FRINGE ACCESSIBILITY PAGE

For information about accessibility measures at Victoria Fringe, such as relaxed performances, American Sign Language interpretation, and visual stories, visit our website <https://bit.ly/fringeaccess>.

WE HOPE YOU ENJOY YOUR VISIT!

If you have attended a show at this venue and have further suggestions to include or correct in this guide, please take a moment to fill out our brief [feedback form](#).

You can also share your thoughts with us through email at pa@intrepidtheatre.com or by phone at 250-383-2633.

We are committed to continuously improving our accessibility resources and appreciate your help.