



NEW EARTH BANDITS

Venue Visual Story

Table Of Contents

Venue Information - Pg. 3

- Entrance
- Path & Terrain
- Tunnel
- Washrooms
- Water
- First Aid
- Waste Management

Venue Map A: Main Site Map - Pg. 7

Venue Map B: Extended Site Map - Pg. 8

How To Get There - Pg. 9

- Parking
- Bussing
- HandyDart, Cabs and Other Drop Offs

Venue Sensory Notes and Recommendations - Pg. 11

Venue Information

Entrance

The entrance to the show is at **304 Clifton Terrace**.

There will be a tent to check in at and staff there to greet you.



Path & Terrain

The primary show path is **550 m** in distance. It is a mix of paved path, as well as packed dirt and rock.

The first half of the loop is level ground. The second half of the loop has a moderate incline.

To help protect the wildlife, we ask that you stay on the path and do not walk in the grass and bushes.



Tunnel

While moving around the site, there is an optional 75m walk up through a tunnel to the highest battlement area.

Note: This tunnel has a two steps up and a quite a steep grade of incline. It also has a low ceiling and is quite narrow. Additionally it will have flashing lights and echoing sounds.

As this tunnel presents a variety of access barriers, no key plot points will be taking place in the tunnel.

Additionally, any action taking place at the top of battlement will be visible and audible from on the main path.



The bottom of the tunnel



The top of the tunnel

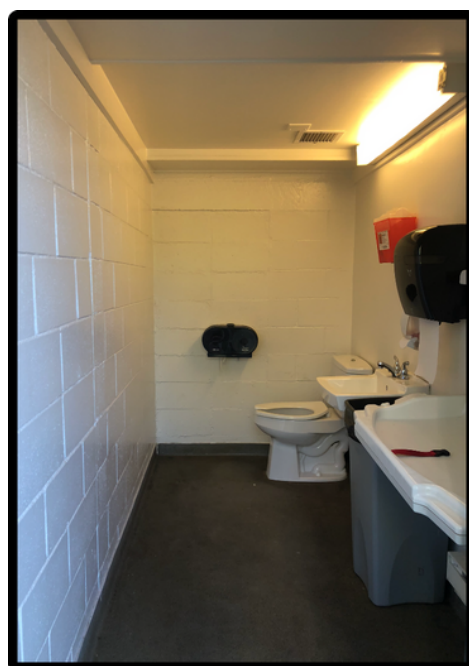
Washrooms

The nearest washrooms at this venue are located in the parking lot of at 1101 Munro St. This is 400m from the main performance.



The washrooms have level access entry points.

Note: The washrooms do not have grab bars. They also have quite heavy doors without automatic door buttons.



Water

There will be two water refill stations at the venue, as marked on the venue map on the following page.

First Aid

There are two key points at the venue for first aid, should you require it. They are also marked on the venue map on the following page.

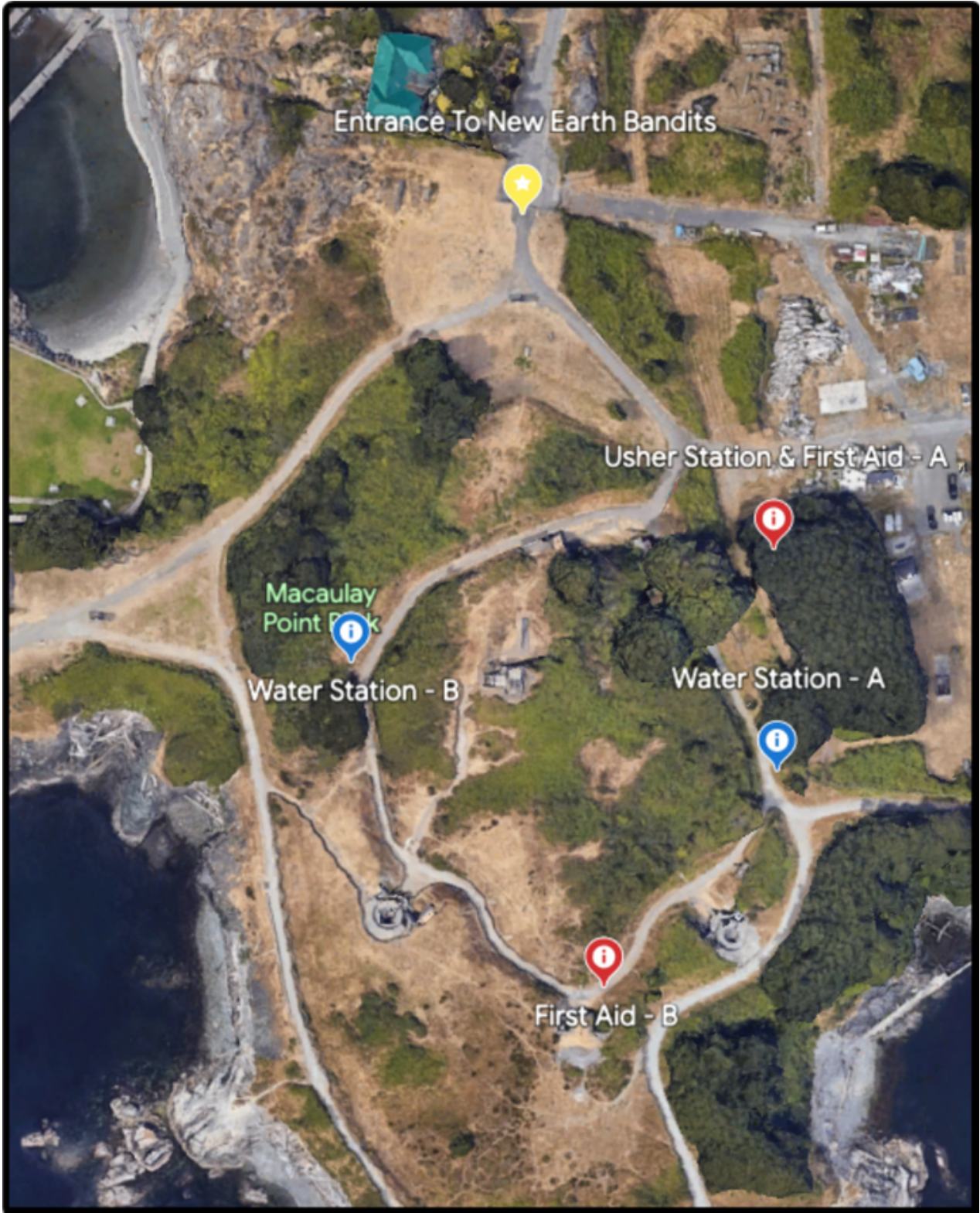
Waste Management

This is a minimal waste show with inclusive waste management. If you are wanting to dispose of any waste, there will be multiple points of disposal. There will also be a character moving around the site collecting and educating about waste.



Venue Map

Map A: Main Site Map



Map B: Extended Site Map



How To Get There

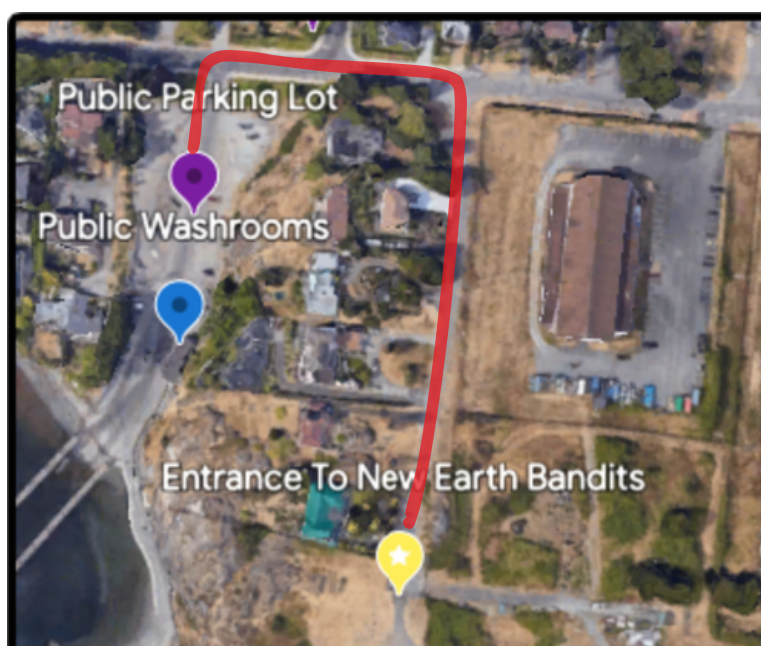
Parking

There is parking available in the main lot at 1101 Munro St.

If you are biking there is a small spot to lock up bikes in the parking lot.



It is a 400m from the parking lot to the show entrance.

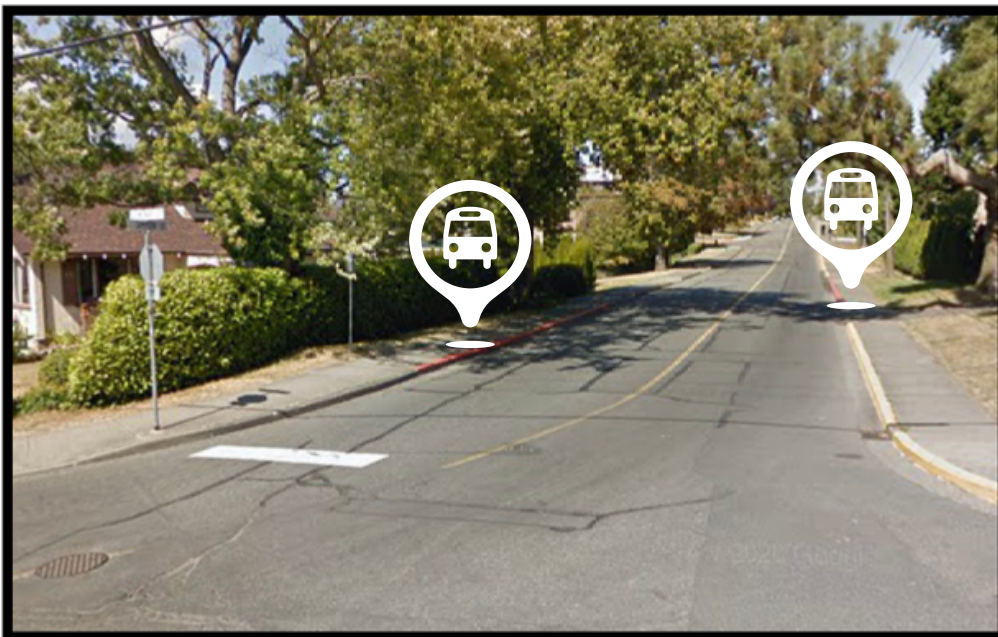


HandyDart, Cabs and Other Drop Offs

If you are using HandyDART, a cab, or being dropped off, please use **304 Clifton Terrace** as your drop off point.

Bussing

If you are bussing to the park, you can take the 25 bus from downtown. It will let you off at Lampson and Munro. It is a 275m to the main entry from the bus stop.



Venue Sensory Notes

This outdoor venue is in a park by the ocean. It can get quite windy.



It can also get quite dusty at the park.

This show will be running rain or shine (excluding storms or other forms of extreme weather)



Recommendations

In the span of the show it may be hot, cool, windy, and/or damp. We recommend you come in wearing layers so you can adjust your temperature as needed as the weather can change quickly.



You may also want to consider wearing sunglasses as the sun will begin to set during the show and get lower in the sky. They will also be helpful if it gets dusty.



Finally, you may also want to consider wearing sunscreen and/or a hat to avoid getting sunburns.

