

Intrepid Studio Visual Guide



This venue guide is to help you prepare for your visit to the Intrepid Studio. It includes information about the theatre's location, a visual guide to the space, and what you can expect when you come for a visit.

TERRITORY ACKNOWLEDGEMENT

The Intrepid Studio is located in Downtown Victoria, BC, on the territories of the ləkʷəŋən people, now known as the Songhees and Esquimalt Nations.

For further information, please visit

<https://intrepidtheatre.com/land-acknowledgement-resources/>

ABOUT

The Intrepid Studio is Intrepid Theatre's main operational building during the year. It is also a studio space for our residency artists, and a rental theatre.

LOCATION

The Intrepid Studio is located at **2-1609 Blanshard St, Victoria, BC, ləkʷəŋən territory.**

Information on bus routes on page 6.

SITE MAP

[Click on this link to view on Google Maps.](#)



PARKING

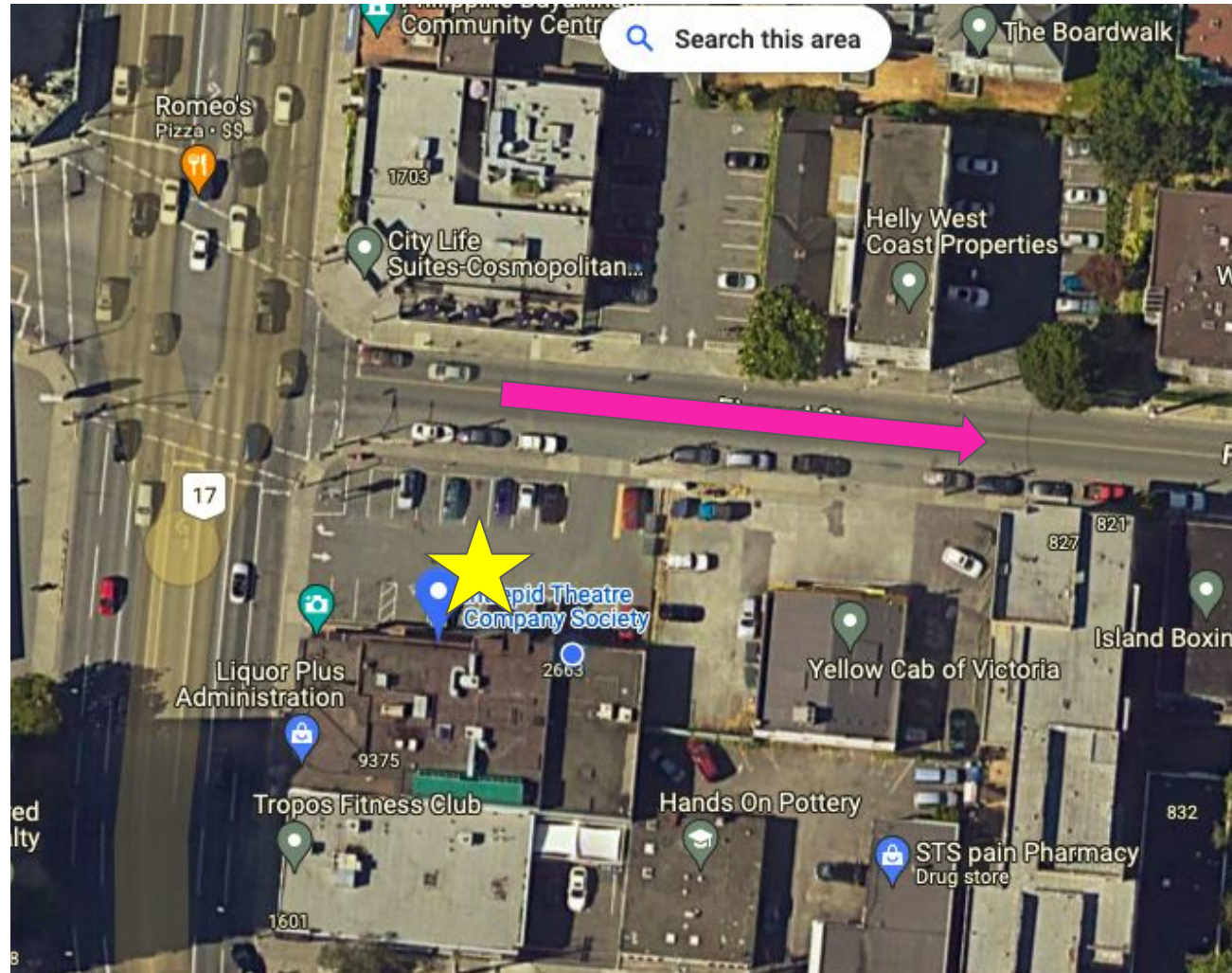


There is **no** designated parking for Intrepid Hub.

There is a parking lot outside the hub usually with spaces available however other businesses in the building will also be using them.

There is also **street parking** along Fisgard Street.

The nearest parkade is the Johnson St parkade.



TRANSIT



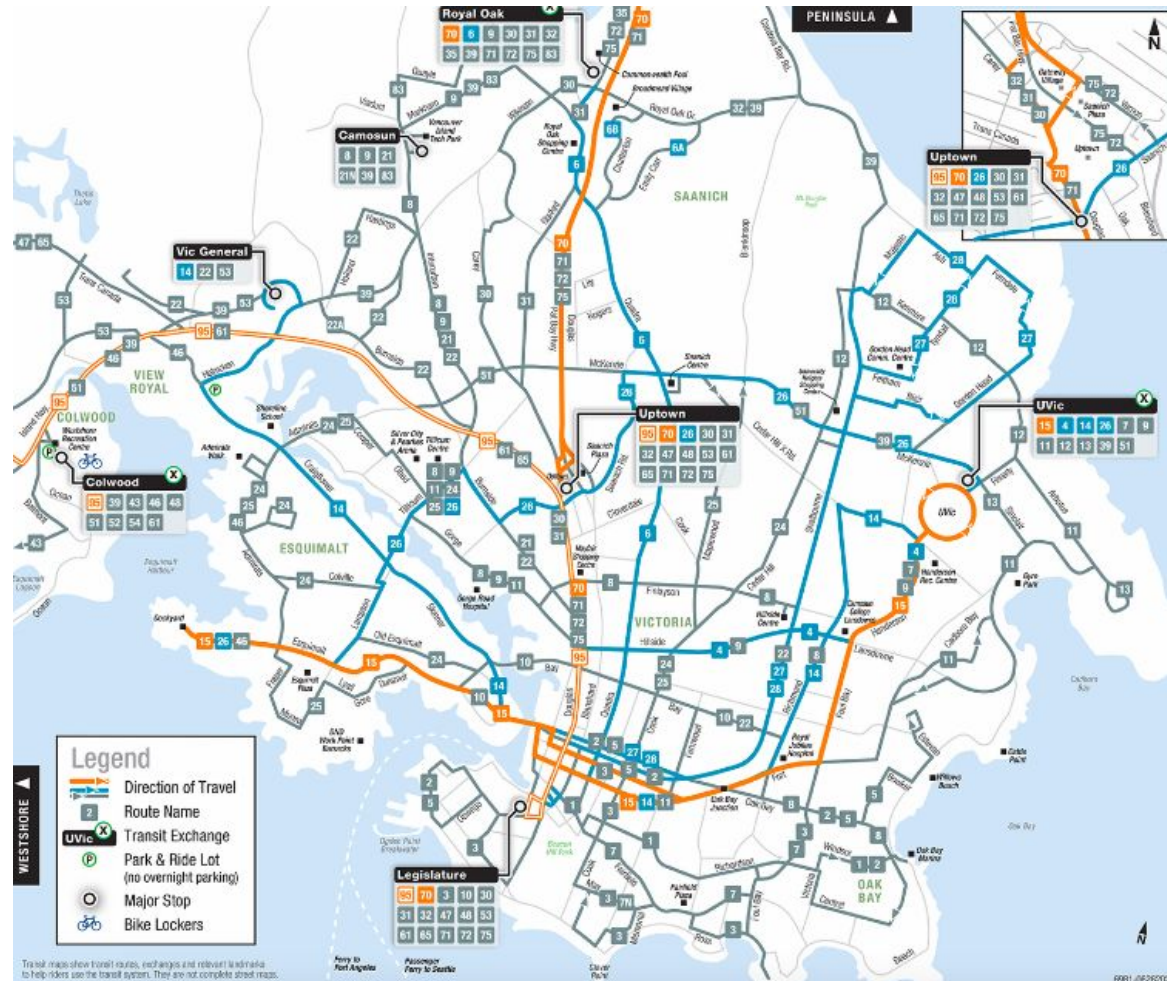
The BC transit bus routes that run near the Intrepid Hub are:

#6 along Quadra St.

#2, 5, 27, 28 along Pandora Street, one block away.

[Click this link](#) to see nearby bus stops and their accompanying routes.

[Click this link](#) for the BC Transit website, complete with schedules, routes, and image descriptions including the one to the right.



CYCLING



There are protected bike lanes along Pandora Ave., one block South from the Intrepid hub.

It can be busy to bike along Balmoral/Fisgard and Quadra St., and there is no bike lane, but sidewalks are available, though not recommended for high-speed.

There are **NO** bike locks near the building, although some choose to lock their bikes to nearby infrastructure. There are bike racks located on Fisgard.

There is **VERY** limited indoor bike storage, please see an Intrepid staff member for assistance.

WHEN YOU ARRIVE

When you arrive, you'll enter the building through the two front doors (pull doors) and you'll be in the lobby.

Please have your ticket email ready (on your phone or printed).

This is where you would purchase tickets if you have not already done so, or have your ticket scanned.



FRONT OF HOUSE STAFF & VOLUNTEERS

At Intrepid shows, you'll be greeted by an Intrepid Front of House Manager and Intrepid volunteers.

For rental events, you'll be greeted by a representative from the performing company. During rental events, there are no Intrepid staff members present.

THE LOBBY

The lobby is the general mingle zone prior to the doors to the theatre opening. There may be a concession available with alcoholic and non-alcoholic beverages. For rental events, there is not usually a concession.



ENTERING THE THEATRE

Inside the theatre is where the show will take place

Seating will be on the risers to the right hand side as you enter the theatre.

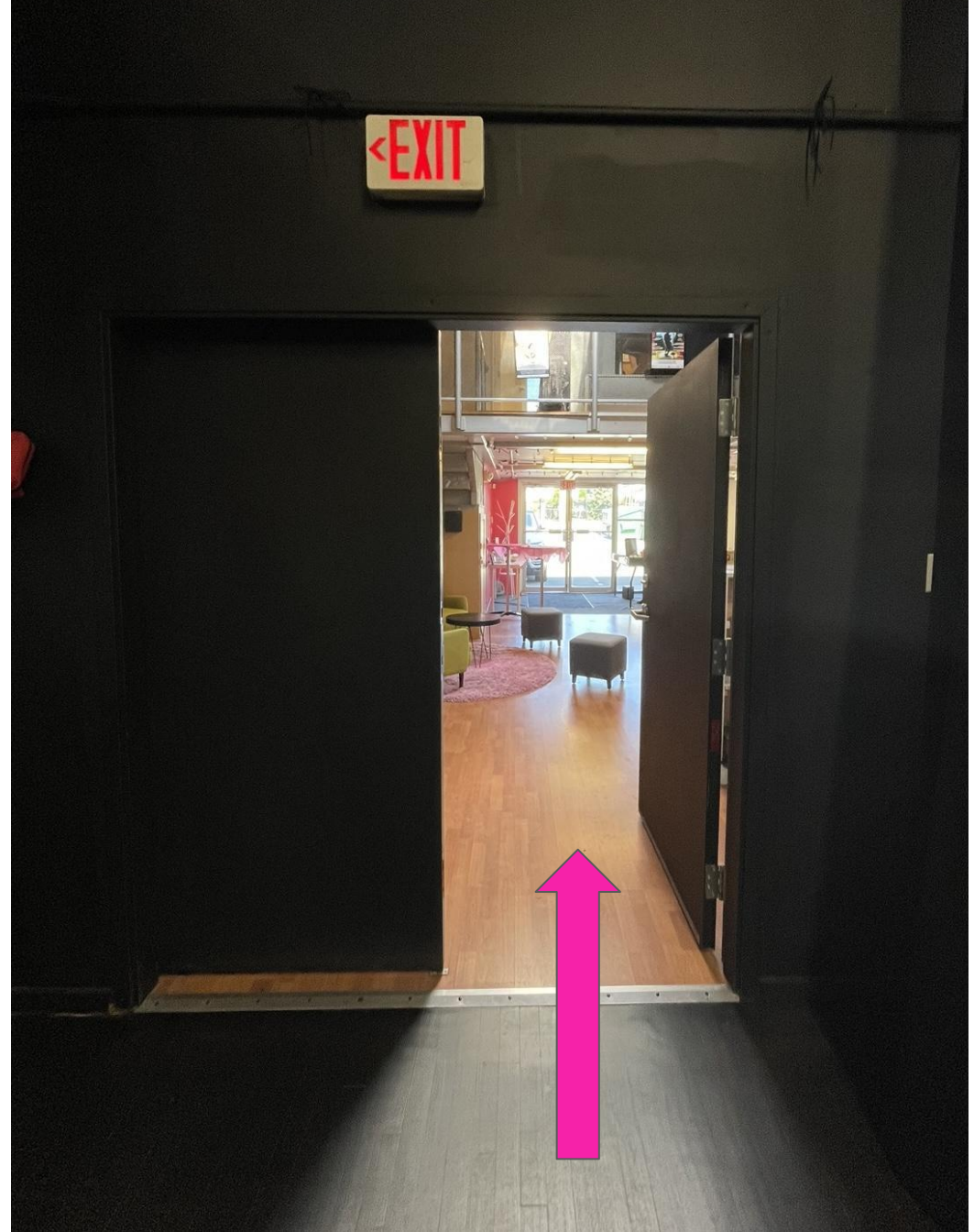
All shows try to start on time. Some artists are alright with latecomers, while others are not. Please check intrepidtheatre.com/shows for more information.



EXITING THE THEATRE

As the studio is an intimate space, please only leave the theatre if you must during a performance. The Front of House Manager or performance company representative will re-seat you at an appropriate time.

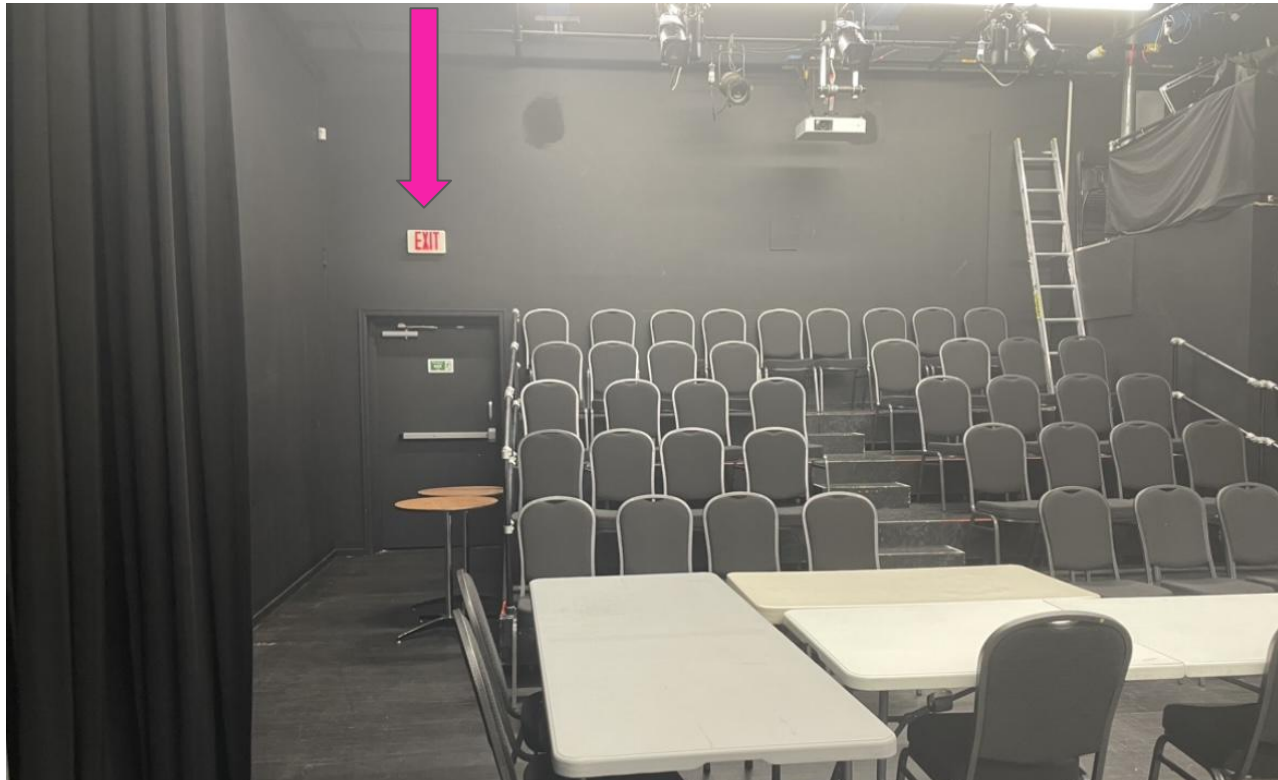
To exit the theatre, return the exact same way you came in. If the lobby is busy or you need assistance, a volunteer or staff will be there to assist.



EMERGENCY EXITS

There are **TWO** emergency exits. Through the front doors, and behind the audience on the opposite side of the theatre space as the entrance doors.

In an emergency situation, staff & volunteers will be able to indicate an exit. The official muster point is the parking lot outside the front entrance.



WASHROOMS

There are two accessible washrooms outside the theatre. One is larger and has a grab bar.



DURING THE SHOW

At the show start time, and Intrepid staff member will talk for a few minutes to welcome the audience and give some information about the show. They will mention any and all elements of the show that audience members could be sensitive to, like haze, strobe lighting, loud noises, etc. and any content warnings about material in the show that could be triggering or upsetting.



During the show, the performers will usually be on the stage, but may be in the audience area too. Any interaction with audience members will be prefaced in the front of house speech, and performers will seek consent before any interaction takes place.

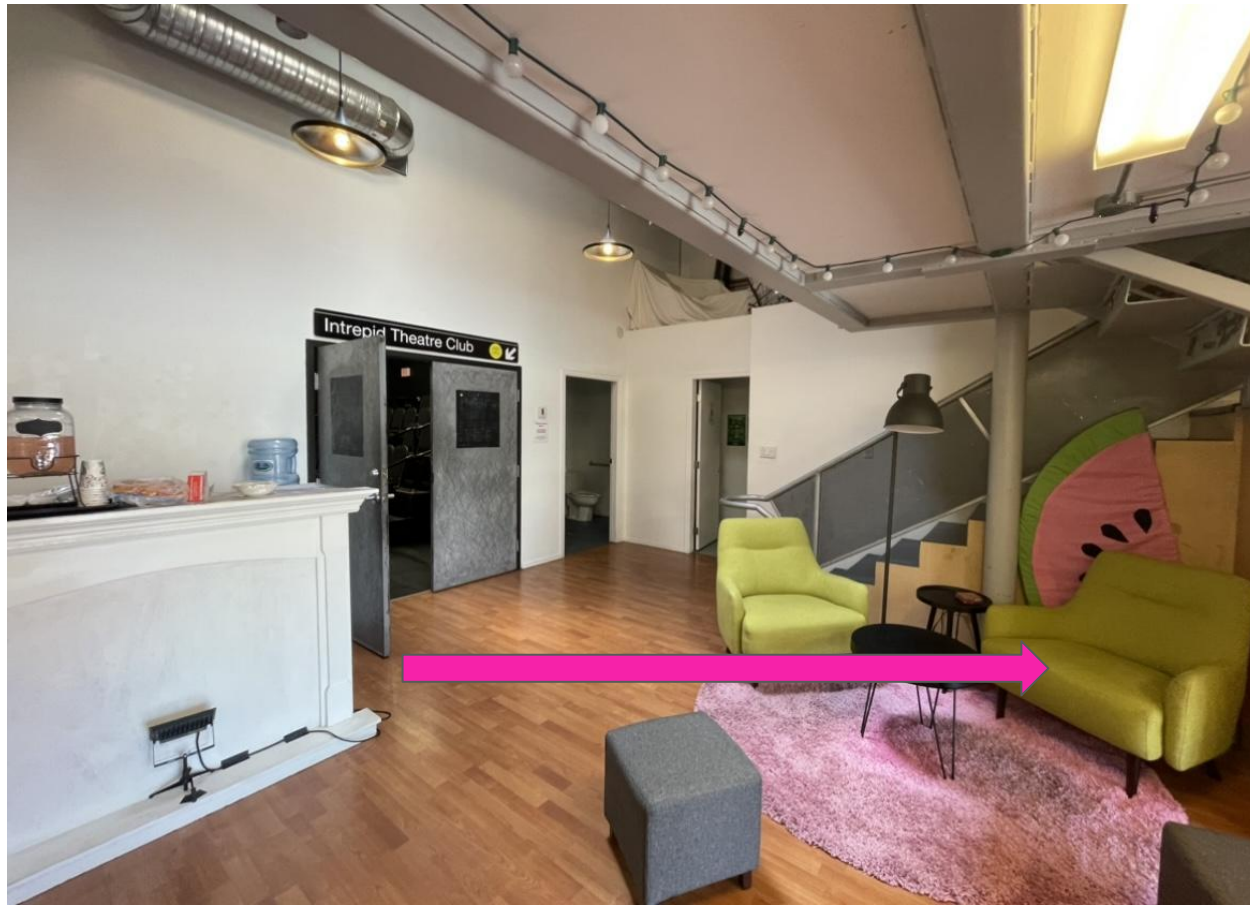


During the show, the audience claps. Some patrons choose to wave their hands in the air should they not want to clap due to noise, and some choose to cover their ears if needed.



AFTER THE SHOW

When the show is over, you will exit the theatre into the lobby through the same doors you came through. The aisles may be busy while everyone is leaving their seats. From the lobby, exit through the main front doors (push to open), and you'll be back on Fisgard Street.



Communicable Disease Prevention Plan

Intrepid Theatre has a Communicable Disease Prevention Plan in place, and can be read in full at intrepidtheatre.com/about/cdpp

Masks are not required, however, we support the wearing of masks by audiences, artists, and volunteers while indoors if they wish to do so. Masks and hand sanitizer are available with Front of House.

Arriving at the theatre will be considered a declaration of good health. If you are feeling unwell, we recommend you stay home and contact tickets@intrepidtheatre.com in advance of the performance. We cannot issue refunds following a performance.

WE HOPE YOU ENJOY YOUR VISIT!

If you have attended a show at this venue and have further suggestions to include or correct in this guide, please contact Emmett at emmett@intrepidtheatre.com

We are committed to continuously improving our accessibility resources and appreciate your help.