



Baumann Centre Venue Guide



This venue guide is to help you prepare for your visit to the Baumann Centre. It includes information about the theatre's location, a visual guide to the space, and what you can expect when you come to see a show.

Table of Contents

Page 1 ... Territory Acknowledgment

Page 2 ... About & Location

Page 3 ... Map

Page 4 ... Performances at this Venue

Page 5 ... Tickets and Fringe Buttons

Page 6 ... “Fringe On The House” Program

Page 7 ... Parking

Page 8 ... Transit

Page 9 ... Cycling

Page 10 ... When You Arrive

Page 11 ... Priority Seating

Page 12 ... Communicable Disease
Prevention Plan

Page 13 ... The Lobby

Page 14 ... Front of House Staff &
Volunteers

Page 15 ... Entering the Theatre

Page 18 ... Exiting the Theatre

Page 21 ... The Stage

Page 22 ... Washrooms

Page 24 ... During the Show

Page 25 ... After the Show

Territory Acknowledgement

The Baumann Centre is located in downtown Victoria, BC, on the territories of the ləkʷəŋən people, now known as the Songhees and Esquimalt Nations.

One action that Intrepid Theatre is taking is that 50% of all donations at the concession at our events are donated to Victoria Orange Shirt Day. The other 50% go to supporting our BIPOC residency programs.

For further information, please visit

<https://intrepidtheatre.com/land-acknowledgement-resources/>

About

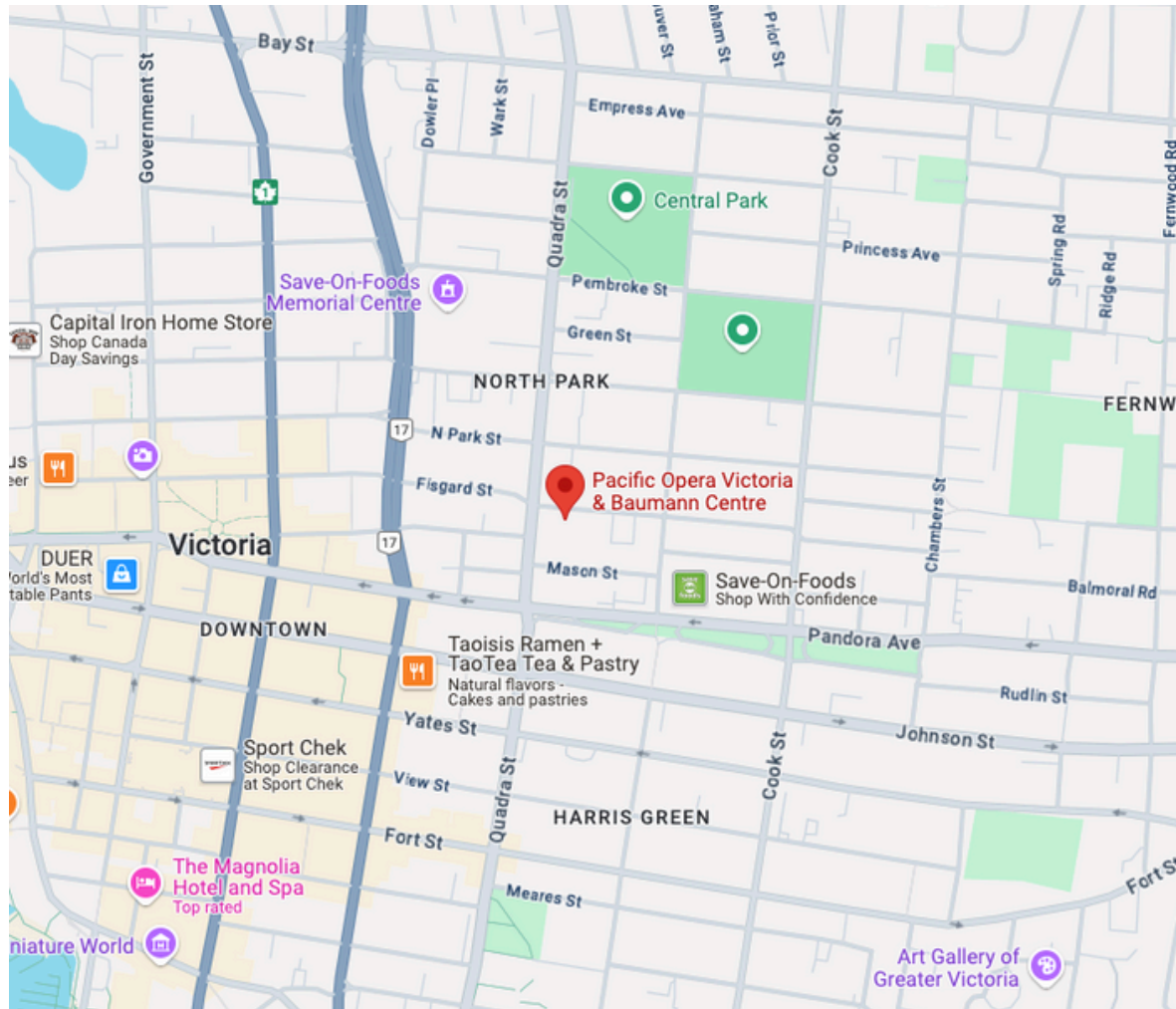
The Baumann Centre is a community, music and administrative facility and a catalyst for regional arts collaboration, music creation, and performances. It seats up to 90 people.

The Wingate Studio is home for chamber performances, opera rehearsals, artist training programs, and an array of initiatives to nurture artists, engage the community, and educate and delight families and youth.

Location

The Baumann Centre is located at 925 Balmoral Road, Victoria, BC, ləkʷəŋən territory.

Map



[Click here to view the Baumann on Google Maps](#)

Performances at Baumann Centre 2025

All accessibility material is available from Front-of-House Staff at the venue and at VictoriaFringe.com

The Lady in the Fountain

Side One

Thursday August 21st 9:00PM
Friday, August 22nd 6:45PM
Saturday, August 23rd 6:00PM
Sunday, August 24th 1:30PM
Thursday, August 28th 9:15PM

The Last 5.5 Years (not to be confused with the musical)

hartofsilver Productions

Friday, August 22nd 5:00PM
Saturday, August 23rd 3:15PM
Sunday, August 24th 3:30PM
Friday, August 29th 9:45PM
Saturday, August 30th 6:15PM

1ForUOne4Me

Leslie Cserepy

Thursday August 21st 6:45PM
Saturday, August 23rd 8:00PM
Sunday, August 24th 5:45PM
Thursday, August 28th 5:00PM
Saturday, August 30th 1:30PM

Evie and Alfie: A Very British Love Story

James Gangl

Tuesday, August 26th 6:15PM
Wednesday, August 27th 8:15PM
Friday, August 29th 7:30PM
Saturday, August 30th 3:30PM
Sunday, August 31st 2:15PM

I AM OK

Amit Solanki

Thursday, August 21st 5:00PM
Friday, August 22nd 9:00PM
Saturday, August 23rd 1:15PM
Tuesday, August 26th 8:15PM
Sunday, August 31st 12:15PM

Enrichment Hour

Three Cheese

Wednesday, August 27th 6:15PM
Thursday, August 28th 7:00PM
Friday, August 29th 5:30PM
Saturday, August 30th 8:15PM
Sunday, August 31st 5:00PM

Tickets and Fringe Buttons

All tickets are online and in advance at www.VictoriaFringe.com. You will receive an email with a QR code that has ALL your purchased tickets for the Fringe (this QR code will update if you purchase more tickets later).

Once you've lined up, a Fringe line concierge will come and check you are in line for the correct show and that you have your Fringe button.

If you purchased your Fringe button online, you can show proof of purchase and the volunteer will give you a button. If you have not purchased a button, you will be able to do so at the venue without losing your spot in line.

Your ticket will be scanned by a volunteer when the doors to the venue open.



Fringe Button

The “Fringe On The House” Program

Free tickets are available to all companions to patrons who identify as a part of the d/Disability community. Just call our box office at 250-383-2663 and ask for a companion ticket when booking.

We are also offering the ‘Fringe on the House’ program this year. If for any reason the cost of a ticket is beyond your means, we have a select number of tickets per show available for free, no questions asked. Just call our box office at 250-383-2663 to book.

Fringe on the House tickets are limited to one ticket per person, per show, up to a maximum of 5 shows.

All tickets need to be booked in advance. To guarantee a Fringe on the House or companion ticket, tickets must be booked before 3pm for weekday shows, and 12pm for weekend shows.

There are two ways to book these tickets:

1. In person. The in person box office is located at 2-1609 Blanshard Street.
 - a. Box Office is open 12pm-5:30pm, Monday to Friday starting August 1st, and then everyday from Monday, August 18th to Sunday, August 31st from 12-5pm. Parker and other festival staff members will be there to offer support.
2. By phone. If you prefer, you can call the box office at 250-383-2663 during the above Box Office hours.

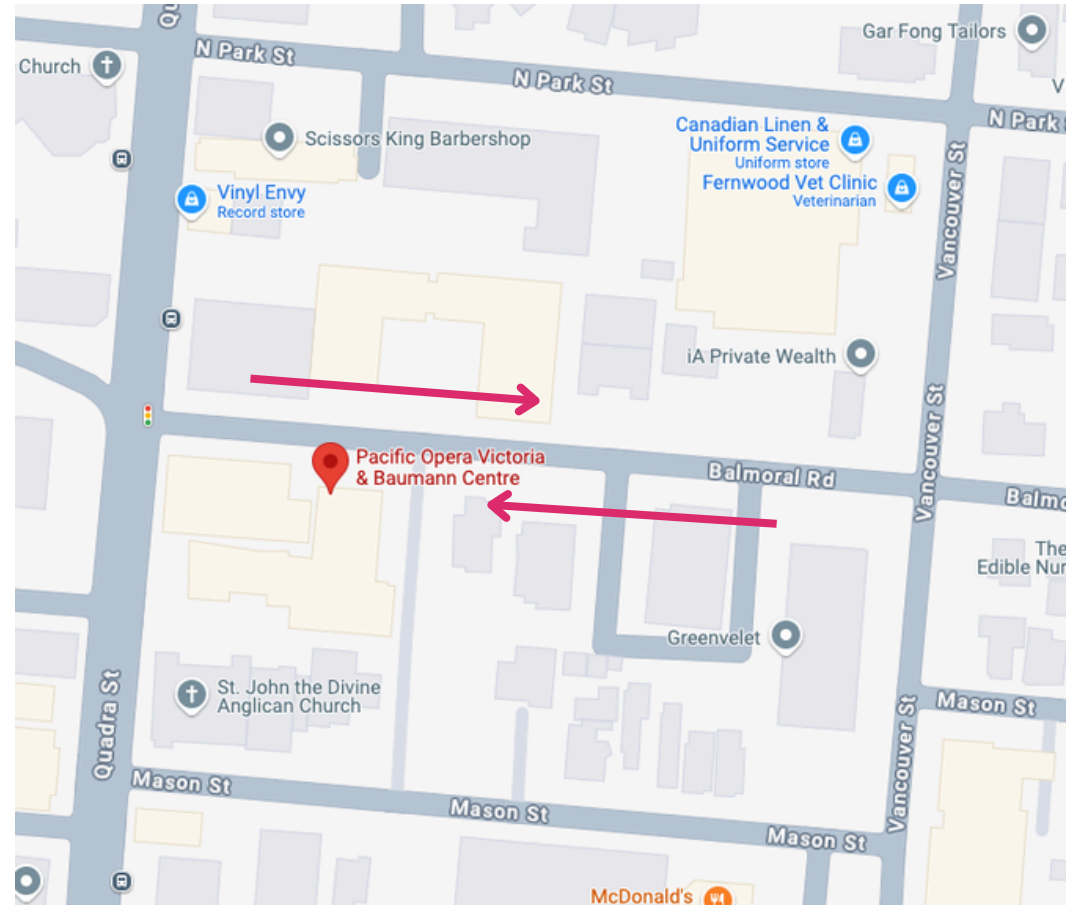
Parking



There is no designated parking for the Baumann Centre.

There is street parking along Balmoral Street running both sides, East of Quadra St. (indicated by the arrows)

There are also a few parking spots along Quadra St.



Transit



The BC transit bus routes that run near the Baumann Centre are:

#6 along Quadra St.

#2, 5, 27, 28 along Pandora St., two blocks away

[Click this link](#) to see nearby bus stops and their accompanying routes.

[Click this link](#) for the BC Transit website, complete with schedules, routes, and image descriptions.

Cycling



There are protected bike lanes along Pandora Ave., two blocks South from the Baumann Centre. It can be busy to bike along Balmoral and Quadra St., and there is no bike lane, but sidewalks are always available, though not recommended for high-speed.

[Click this link](#) to find your safest cycling route to the Baumann Centre from your location.

There are four large metal-ring bike racks outside the venue.



When You Arrive

When you arrive, you will line up on the sidewalk to the left of the entrance.

There will be a fringe poster and signage to guide you.

A Fringe volunteer will also be present to instruct you where to go if you need help.



Priority Seating

Seats may be reserved for accessibility needs if we have been notified in advance. You can do so by leaving a note when you purchase tickets, or contacting our box office at tickets@intrepidtheatre.com

We recommend arriving 25 minutes early if you need an accessible seat so our Front of House Manager can support you.

Communicable Disease Prevention Plan

Intrepid Theatre has a Communicable Disease Prevention Plan in place, and can be read in full at intrepidtheatre.com/about/policies

Masks are not required, however, we support the wearing of masks by audiences, artists, and volunteers while indoors if they wish to do so. Masks and hand sanitizer are available with Front of House.

Arriving at the theatre will be considered a declaration of good health. If you are feeling unwell, we recommend you stay home and contact tickets@intrepidtheatre.com in advance of the performance. We cannot issue refunds following a performance.

The Lobby

Once you enter, you will be in the lobby. This is where you may purchase a button from a Fringe Volunteer if you have not already.

To your immediate right is the box office table where you will meet the Front-of-House manager.

They are a Fringe staff member who supervises the audience areas. Their job is to help the audience.

If you need to use the washrooms before the doors open, you will be escorted by a volunteer or FOH Manager



Front of House Staff & Volunteers

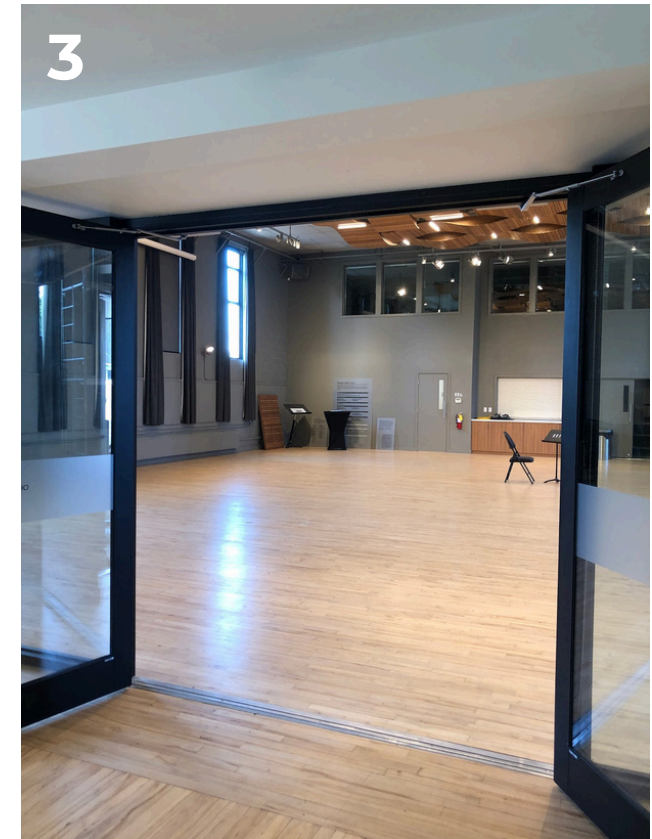
In the Box Office, you will meet Keira Nolting (she/her), the front of house manager, and Fringe volunteers, who are responsible for showing you to the theatre and answering any questions you have.

Volunteers can be spotted by looking for purple t-shirts and friendly faces!



Entering the Theatre

The entrance to the theatre is at the top of the stairs or accessible by lift.
If you are using the stairs, you will go directly up 2 flights of stairs which are 8 steps each with railings on both sides.



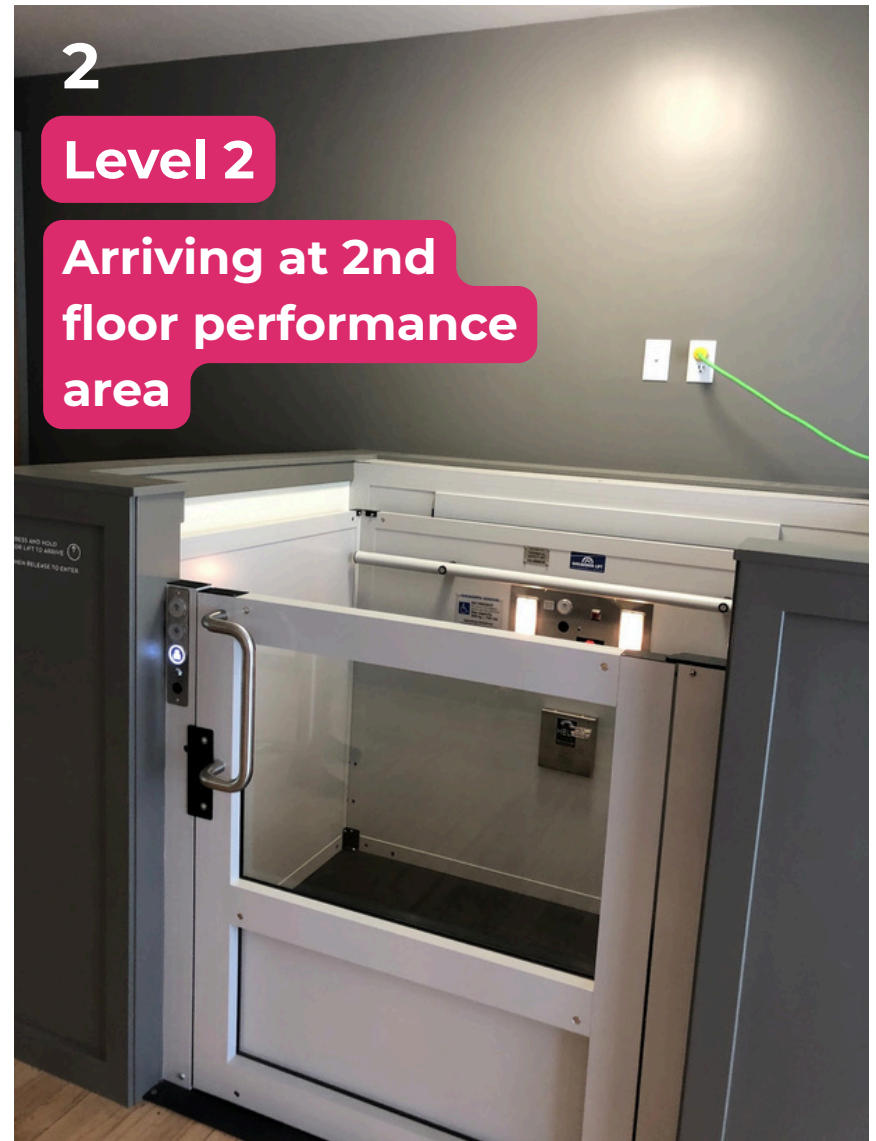
Entering the Theatre (con't)

The lift has a pull door that opens outwards. To call the lift you need to press and hold the “down” button for the lift to arrive, then release the button to open the door and enter.

A Fringe volunteer will be available to support patrons in using the lift.



Entering the Theatre (con't)



Exiting the Theatre

When you exit the space, you will turn left to go down the stairs.
If you are using the lift, a Fringe volunteer or staff member will assist you.

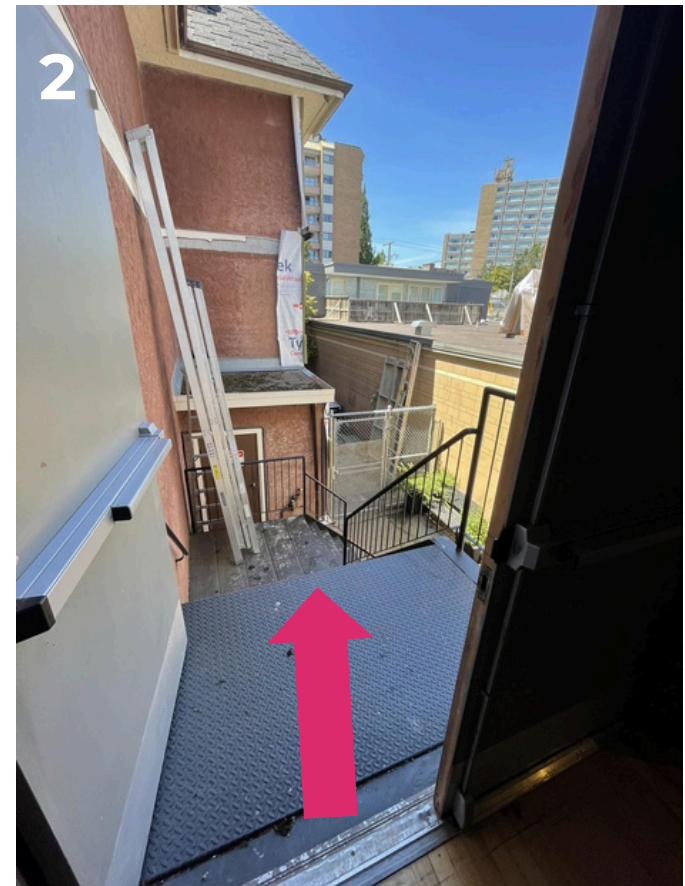
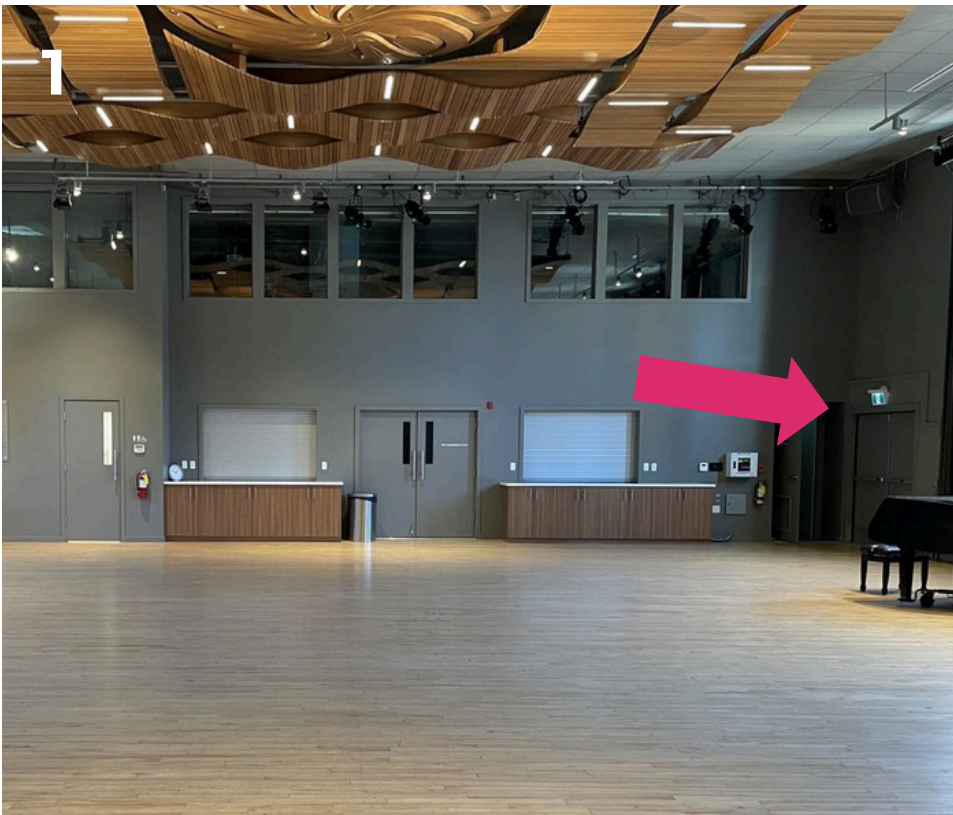


Exiting the Theatre (con't)

There are TWO emergency exits. Both exits involve stairs, and the only accessible exit is to return down the lift.

Along the same wall as the washroom entrance is the first emergency exit.

Descend two flights of stairs and follow the path out the front gate.



Exiting the Theatre (con't)

The SECOND emergency exit is on the first landing of the main staircase (you would have passed it if you took the stairs). This exit also leads directly to the exit gate at the front of the building.



The Stage

The stage is subject to change per show, however audience seating will be clearly visible.

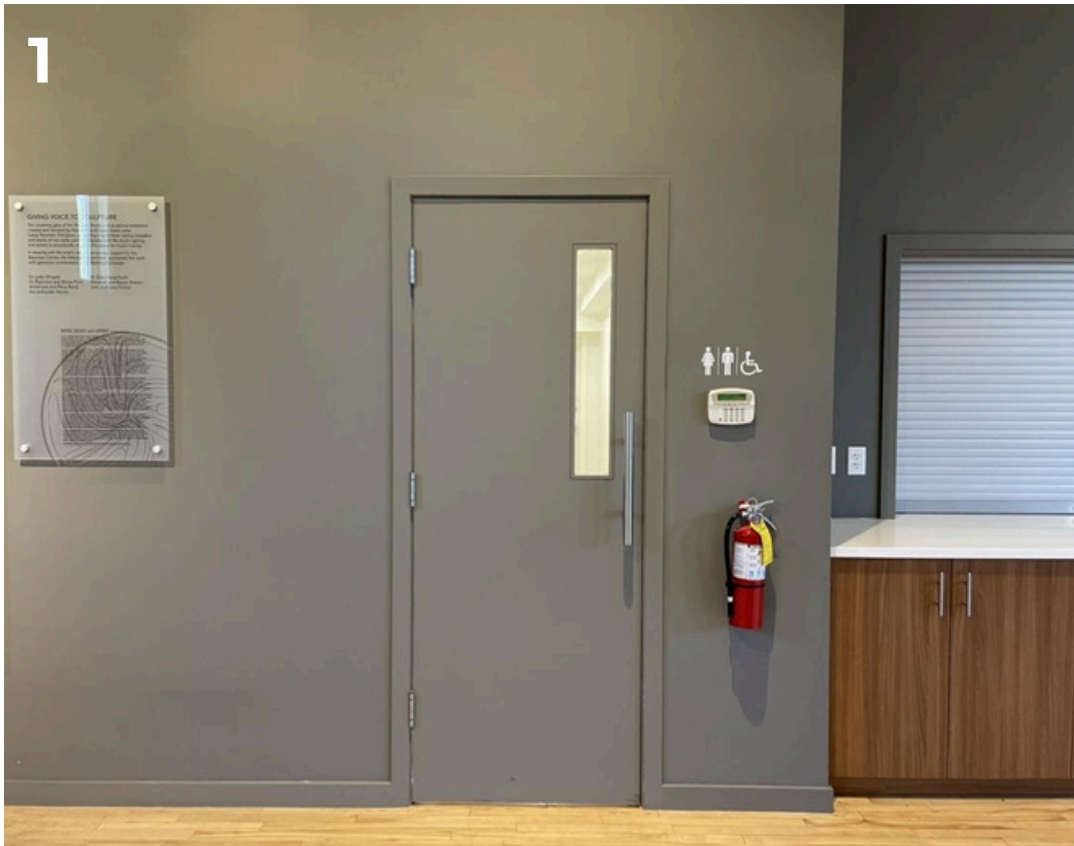
Unless specified otherwise, the show will take place entirely in front of the audience.

There may be set pieces, props, technical equipment, or even performers onstage prior to the show.



Washrooms

At the back of the space is the door to the washrooms, which will be propped open. There are 2 accessible, all-gender washrooms on site.



Washrooms (con't)

The doors to each washroom are heavy and you may require a Fringe volunteer to help when entering/exiting the general area. Each washroom has an accessible stall with a grab bar.



During the Show

At the show start time, a Fringe staff member will talk for a few minutes to welcome the audience (called the front of house speech) and give some information about the show. They will mention any and all elements of the show that audience members could be sensitive to, like haze, strobe lighting, loud noises, etc. and any content warnings about material in the show that could be triggering or upsetting.

We try to start all shows on time. Some shows may allow latecomers, some may allow audiences to come and go throughout the show, and some may not admit latecomers at all—it varies from show to show. See individual show details at intrepidtheatre.com/shows.

During the show, the performers will usually be on the stage, but may be in the audience area too. Any interaction with audience members will be prefaced in the front of house speech, and performers will seek consent before any interaction takes place.

At the end of the show, the performers will bow while the audience claps. Some patrons choose to wave their hands in the air should they not want to clap due to noise, and some choose to cover their ears if needed.

After the Show

People sometimes thank the artist or ask them questions afterward. The artist will let audiences know if they want to chat outside the theatre or inside depending on how much they have to pack up. They might share further info about their show or how to get in touch with them in the future.

Artists also sometimes have merchandise for sale on the stage.

When the show is over, you will exit the theatre into the lobby through the same doors you came through. The aisles may be busy while everyone is leaving their seats. From the lobby, exit through the main front doors (push to open), and you'll be back on Balmoral Street.

We hope you enjoy your visit!

If you have attended a show at this venue and have further suggestions to include or correct in this guide, please contact Emmett at

emmett@intrepidtheatre.com

We are committed to continuously improving our accessibility resources and appreciate your help.