



Metro Studio Theatre Venue Guide



This venue guide is to help you prepare for your visit to the Metro Studio Theatre. It includes information about the theatre's location, a visual guide to the space, and what you can expect when you come to see a show.

Table of Contents

Page 1 ... Territory Acknowledgment

Page 2 ... About & Location

Page 3 ... Map

Page 4 ... Performances at this Venue

Page 5 ... Tickets and Fringe Buttons

Page 6 ... “Fringe On The House” Program

Page 7 ... Parking

Page 8 ... Transit

Page 9 ... Cycling

Page 10 ... When You Arrive

Page 11 ... Priority Seating

Page 12 ... Communicable Disease
Prevention Plan

Page 13 ... The Lobby

Page 14 ... Front of House Staff &
Volunteers

Page 15 ... Entering the Theatre

Page 18 ... Exiting the Theatre

Page 19 ... The Stage

Page 20 ... Washrooms

Page 26 ... During the Show

Page 27 ... After the Show

Territory Acknowledgement

The Metro Studio Theatre is located in downtown Victoria, BC, on the territories of the lək'wəŋən people, now known as the Songhees and Esquimalt Nations.

One action that Intrepid Theatre is taking is that 50% of all donations at the concession at our events are donated to Victoria Orange Shirt Day. The other 50% go to supporting our BIPOC residency programs.

For further information, please visit

<https://intrepidtheatre.com/land-acknowledgement-resources/>

About

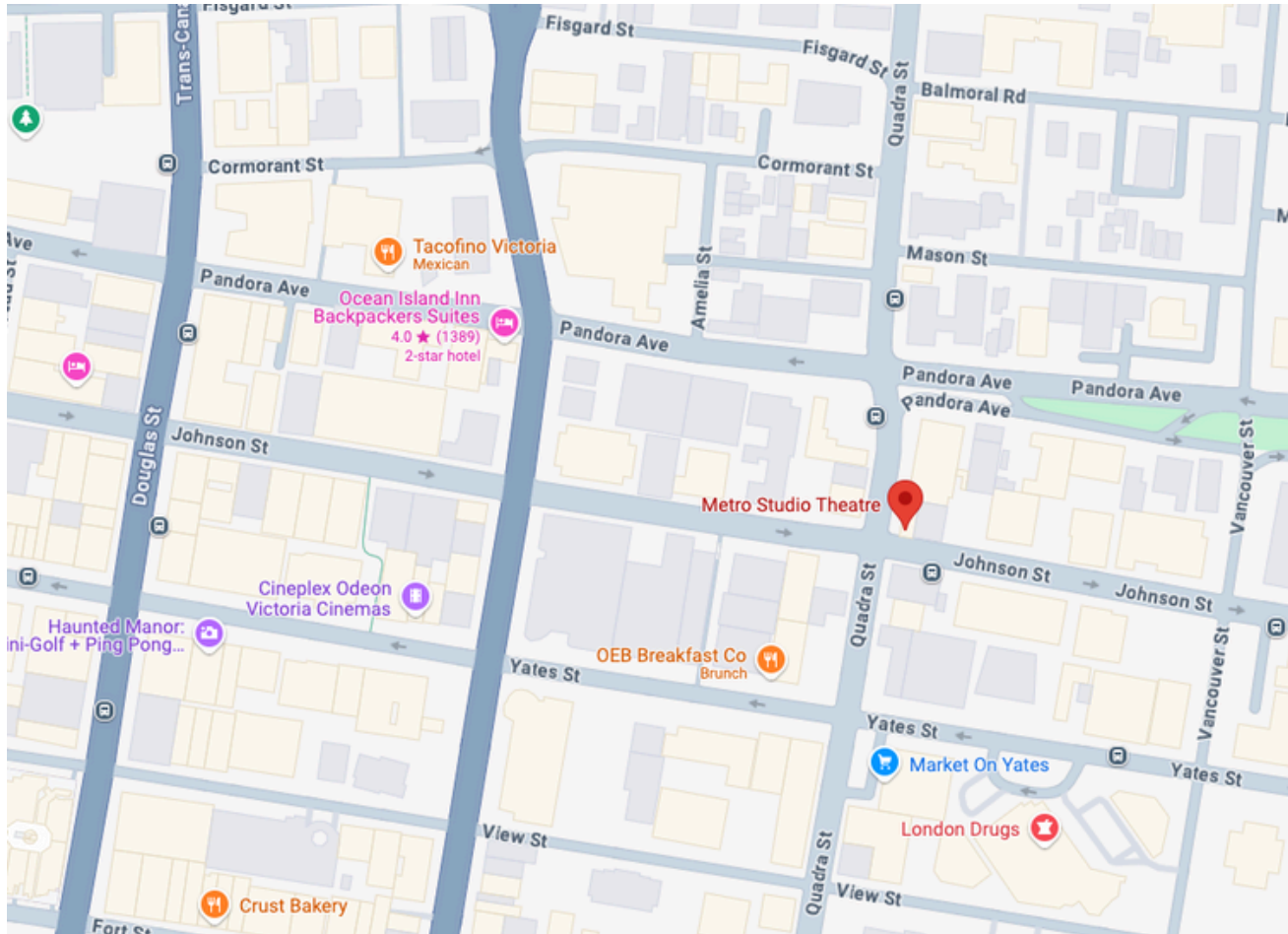
Intrepid Theatre runs the Metro Studio. Throughout the year, we use it for our festivals: OUTstages, Incoming, and the Victoria Fringe Festival, as well as presentations of shows by touring artists. It seats up to 170 people.

We also rent the theatre to various companies and groups who do their own shows, including theatre, comedy, and dance. Sometimes there are other events at the Metro, such as conferences or other gatherings.

Location

The Metro Studio is located at 1411 Quadra Street, Victoria, BC, ləkʷəŋən territory, at the corner of Johnson Street and Quadra street, and is attached to the Victoria Conservatory of Music (VCM).

Map



[Click here to view the Metro on Google Maps](#)

Performances at Metro Studio Theatre 2025

All accessibility material is available from Front-of-House Staff at the venue and at VictoriaFringe.com

Outstanding!

Ballen Works

Friday, August 22nd 5:30PM
Saturday, August 23rd 7:00PM
Sunday, August 24th 2:45PM
Saturday, August 30th 8:00PM
Sunday, August 31st 3:45PM

Tragedy or Triumph:

An Improvised Shakespearean Epic

The Spontaneous Shakespeare Company

Friday, August 22nd 9:30PM
Saturday, August 23rd 2:15PM
Sunday, August 24th 7:15PM
Friday, August 29th 6:15PM
Saturday, August 30th 6:00PM

Voices of Every Woman

Producciones Luna Escarlatta

Thursday, August 21st 9:00PM
Friday, August 22nd 7:15PM
Saturday, August 23rd 4:15PM
Sunday, August 24th 5:15PM
Tuesday, August 26th 8:30PM

Candy ROBERTS is LARRY

Candy Bones Theatre

Tuesday, August 26th 6:30PM
Wednesday, August 27th 8:30PM
Friday, August 29th 10:30PM
Saturday, August 30th 3:15PM
Sunday, August 31st 6:00PM

Joan Bessie Cabaret

Playa

Thursday, August 21st 7:00PM
Saturday, August 23rd 8:45PM
Sunday, August 24th 12:45PM
Thursday, August 28th 8:00PM
Saturday, August 30th 10:00PM

Escape from Victoria

Tamlynn Bryson

Wednesday, August 27th 6:30PM
Thursday, August 28th 8:30PM
Friday, August 29th 8:15PM
Saturday, August 30th 1:15PM
Sunday, August 31st 1:45PM

Tickets and Fringe Buttons

All tickets are online and in advance at www.VictoriaFringe.com. You will receive an email with a QR code that has ALL your purchased tickets for the Fringe (this QR code will update if you purchase more tickets later).

Once you've lined up, a Fringe line concierge will come and check you are in line for the correct show and that you have your Fringe button.

If you purchased your Fringe button online, you can show proof of purchase and the volunteer will give you a button. If you have not purchased a button, you will be able to do so at the venue without losing your spot in line.

Your ticket will be scanned by a volunteer when the doors to the venue open.



Fringe Button

The “Fringe On The House” Program

Free tickets are available to all companions to patrons who identify as a part of the d/Disability community. Just call our box office at 250-383-2663 and ask for a companion ticket when booking.

We are also offering the ‘Fringe on the House’ program this year. If for any reason the cost of a ticket is beyond your means, we have a select number of tickets per show available for free, no questions asked. Just call our box office at 250-383-2663 to book.

Fringe on the House tickets are limited to one ticket per person, per show, up to a maximum of 5 shows.

All tickets need to be booked in advance. To guarantee a Fringe on the House or companion ticket, tickets must be booked before 3pm for weekday shows, and 12pm for weekend shows.

There are two ways to book these tickets:

1. In person. The in person box office is located at 2-1609 Blanshard Street.
 - a. Box Office is open 12pm-5:30pm, Monday to Friday starting August 1st, and then everyday from Monday, August 18th to Sunday, August 31st from 12-5pm. Parker and other festival staff members will be there to offer support.
2. By phone. If you prefer, you can call the box office at 250-383-2663 during the above Box Office hours.

Parking



There is no designated parking for the Metro. (The parking lot behind the Metro is reserved for the Victoria Conservatory of Music.)

There is street parking along Johnson Street as it runs down both sides of Quadra St, which is free after 6pm. There is also a paid parking lot on the opposite corner of Quadra & Johnson (kitty corner).

The nearest parkade is the Johnson St. Parkade (entrance at 750 Johnson St.).



Transit



The BC transit bus routes that run near the Metro are:

#6 along Quadra St.

#2, 24, 25, 27, 28 along Johnson St. (Johnson is a one-way street going away from downtown. In the opposite direction, these routes run on Yates or Pandora.)

Many other routes also stop within walking distance of the Metro along Pandora, Yates, Fort and Douglas Streets.

[Click this link](#) to see nearby bus stops and their accompanying routes.

[Click this link](#) for the BC Transit website, complete with schedules, routes, and image descriptions including the one to the right.

Cycling



There are protected bike lanes along Pandora Ave., one block North from the Metro. It can be busy to bike along Quadra St., and there is no bike lane, but sidewalks are always available, though not recommended for high-speed.

[Click this link](#) to find your safest cycling route to the Metro Studio theatre from your location.

There is NO designated bike rack outside of the Metro. There is a bike rack inside the gates of the Victoria Conservatory of Music, but the gates are locked at 8pm daily.

We cannot store your bike inside the Metro.

When You Arrive

You will line up along the sidewalk around the corner. You will enter through the red doors on Quadra Street, as pictured to the right.

When you are coming from outside, the doors open toward you (pull to open). They are quite heavy. There is no automatic push button. The entrance is level to the ground and wheelchair accessible, though there is a small metal lip.

Please bring your confirmation email (on a phone or printed) to the show for entry.

If you forget your confirmation email, we can look your tickets up by last name.



Line up this way

Priority Seating

Seats may be reserved for accessibility needs if we have been notified in advance. You can do so by leaving a note when you purchase tickets, or contacting our box office at tickets@intrepidtheatre.com

We recommend arriving 25 minutes early if you need an accessible seat so our Front of House Manager can support you.

Communicable Disease Prevention Plan

Intrepid Theatre has a Communicable Disease Prevention Plan in place, and can be read in full at intrepidtheatre.com/about/policies

Masks are not required, however, we support the wearing of masks by audiences, artists, and volunteers while indoors if they wish to do so. Masks and hand sanitizer are available with Front of House.

Arriving at the theatre will be considered a declaration of good health. If you are feeling unwell, we recommend you stay home and contact tickets@intrepidtheatre.com in advance of the performance. We cannot issue refunds following a performance.

The Lobby

Once you enter, you will be in the lobby. This is where you may purchase a ticket if you have not already.

The lobby floor is on an incline. There is a handrail on the left-hand side only.

There is always a Front of House Manager at the Metro for Fringe shows. They are a Fringe staff member who supervises the audience areas. Their job is to help the audience, and they'll usually be in or near the lobby when you arrive.

If you need help or have any questions, you can ask the Front of House Manager or volunteers.



Front of House Staff & Volunteers

In the Box Office, you will meet Amanda Lynne Ballard (she/her), the front of house manager, and Fringe volunteers, who are responsible for showing you to the theatre and answering any questions you have.

Volunteers can be spotted by looking for purple t-shirts and friendly faces!

There will be a picture of the FOH Manager here soon!



Entering the Theatre

The theatre is through the doors at the end of the lobby. They usually open 15-30 minutes prior to the start of the show.



Entering the Theatre (con't)

When you enter into the theatre, you'll be in a corridor. To the left leads to the theatre. When you turn left, the corridor looks like this. During a show, the lights will be dimmed.



Entering the Theatre (con't)

When you reach the end of the hall, you have entered the theatre! The seats are red and fold upward. Seats with signage or other forms of blockage will indicate not to sit in them.

The rows of seats are tiered. There are three aisles with stairs: one on each side, and one in the centre. The aisle on the right if you are facing the audience area has a railing, the aisle on house left has a ledge you can lean on but not a railing, and the centre aisle doesn't have any railing or support.



Exiting the Theatre

There is an emergency exit located on the opposite side of the theatre from where you entered, at the top of the stairs (the back corner of the theatre). This is an emergency exit only and should not be used to regularly exit the theatre.

If you need to leave the theatre during the performance for a non-emergency, exit through the same doors you entered through. Front of House will re-seat you at an appropriate time if you have left during the performance.

*this exit is for emergency use only



The Stage

The stage is proscenium, meaning the audience sits on one side, and the stage faces directly towards them.

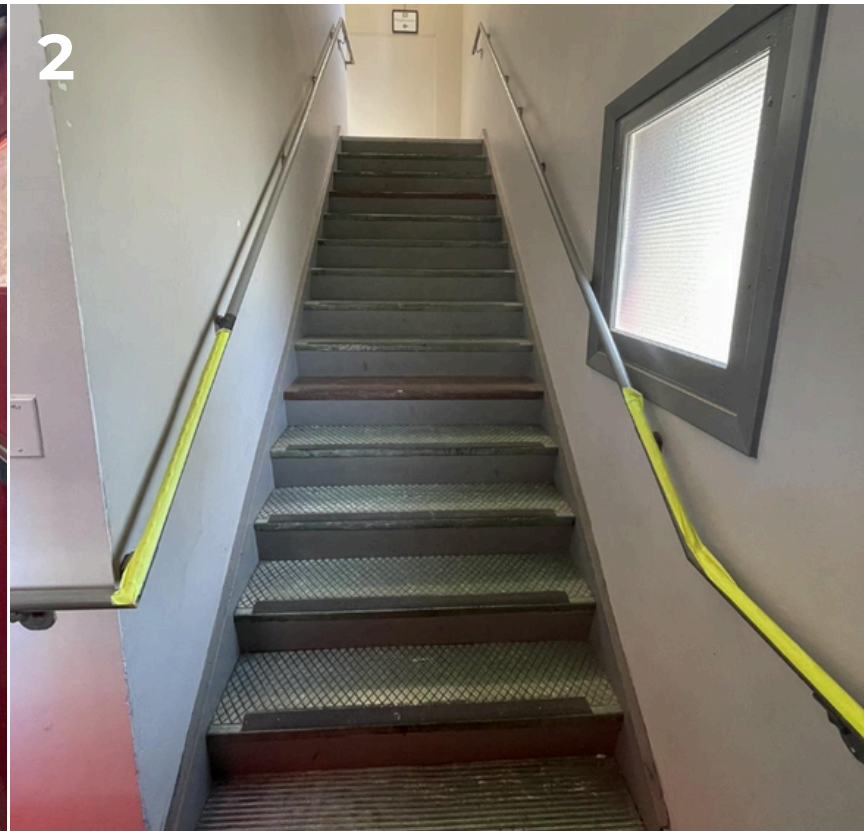
Unless specified otherwise, the show will take place entirely in front of the audience.

There may be set pieces, props, technical equipment, or even performers onstage prior to the show.



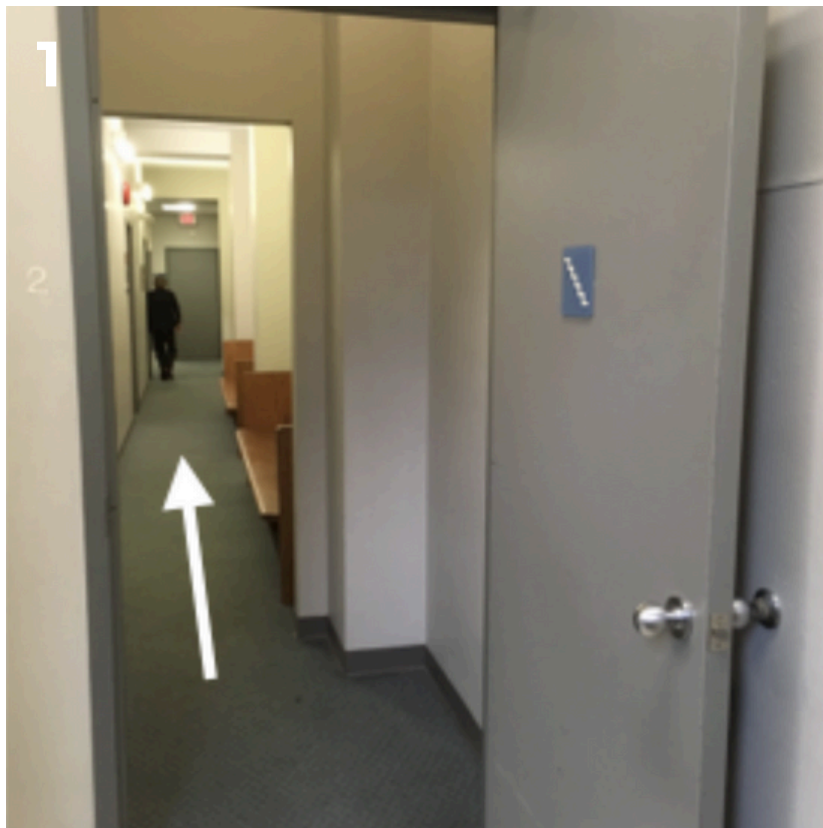
Washrooms

Two washrooms are upstairs. In the entrance to the lobby. You will see a flight of stairs on your right which lead to these washrooms. There are railings on both sides.



Washrooms (con't)

Below are pictures of what it looks like at the top of the stairs. Follow this hall to get to the washrooms. The lights in this hall are fluorescent.



Washrooms (con't)

You'll then arrive at the two washrooms. There is a water fountain and hand sanitizer on the wall in between.



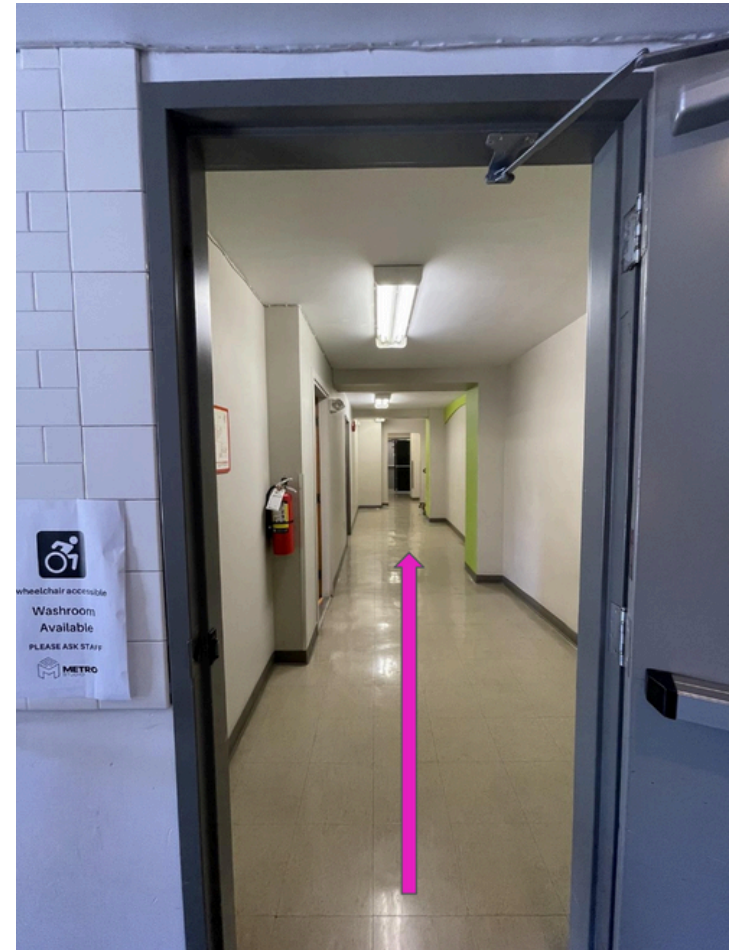
Washrooms (con't)

The wheelchair accessible & single-user gender-neutral washroom is on the main floor. It is through a door in the lobby to the left of the theatre doors. This door is usually closed because it also leads to backstage. Please let a volunteer or the Front of House Manager know you need to access the main floor washroom, and they'll be happy to show you through.



Washrooms (con't)

Once you go through the door, you will be in a long hallway. It takes you past the dressing room on the left (where there may be performers) and the entrance to the stage on the right.



Washrooms (con't)

At the end of the hall on the left of the staircase and through a green doorway is a grey door. This is the accessible washroom. It has one sink, one toilet, and a grab bar.



During the Show

At the show start time, a Fringe staff member will talk for a few minutes to welcome the audience (called the front of house speech) and give some information about the show. They will mention any and all elements of the show that audience members could be sensitive to, like haze, strobe lighting, loud noises, etc. and any content warnings about material in the show that could be triggering or upsetting.

We try to start all shows on time. Some shows may allow latecomers, some may allow audiences to come and go throughout the show, and some may not admit latecomers at all—it varies from show to show. See individual show details at intrepidtheatre.com/shows.

During the show, the performers will usually be on the stage, but may be in the audience area too. Any interaction with audience members will be prefaced in the front of house speech, and performers will seek consent before any interaction takes place.

At the end of the show, the performers will bow while the audience claps. Some patrons choose to wave their hands in the air should they not want to clap due to noise, and some choose to cover their ears if needed.

After the Show

People sometimes thank the artist or ask them questions afterward. The artist will let audiences know if they want to chat outside the theatre or inside depending on how much they have to pack up. They might share further info about their show or how to get in touch with them in the future.

Artists also sometimes have merchandise for sale on the stage.

When the show is over, you will exit the theatre into the lobby through the same doors you came through. The aisles may be busy while everyone is leaving their seats. From the lobby, exit through the main front doors (push to open), and you'll be back on the corner of Quadra and Johnson Street.

We hope you enjoy your visit!

If you have attended a show at this venue and have further suggestions to include or correct in this guide, please contact Emmett at

emmett@intrepidtheatre.com

We are committed to continuously improving our accessibility resources and appreciate your help.