



VCM Wood Hall Venue Guide



This venue guide is to help you prepare for your visit to the VCM Wood Hall Auditorium. It includes information about the theatre's location, a visual guide to the space, and what you can expect when you come to see a show.

Table of Contents

Page 1 ... Territory Acknowledgment

Page 2 ... About & Location

Page 3 ... Map

Page 4 ... Performances at this Venue

Page 5 ... Tickets and Fringe Buttons

Page 6 ... “Fringe On The House” Program

Page 7 ... Parking

Page 8 ... Transit

Page 9 ... Cycling

Page 10 ... When You Arrive

Page 11 ... Priority Seating

Page 12 ... Communicable Disease
Prevention Plan

Page 13 ... The Lobby

Page 14 ... Front of House Staff &
Volunteers

Page 15 ... Entering the Theatre

Page 17 ... Exiting the Theatre

Page 19 ... The Stage

Page 20 ... Washrooms

Page 25 ... During the Show

Page 26 ... After the Show

Territory Acknowledgement

The Victoria Conservatory of Music including the Wood Hall is located in Downtown Victoria, BC, on the territories of the ləkʷəŋən people, now known as the Songhees and Esquimalt Nations.

One action that Intrepid Theatre is taking is that 50% of all donations at the concession at our events are donated to Victoria Orange Shirt Day. The other 50% go to supporting our BIPOC residency programs.

For further information, please visit

<https://intrepidtheatre.com/land-acknowledgement-resources/>

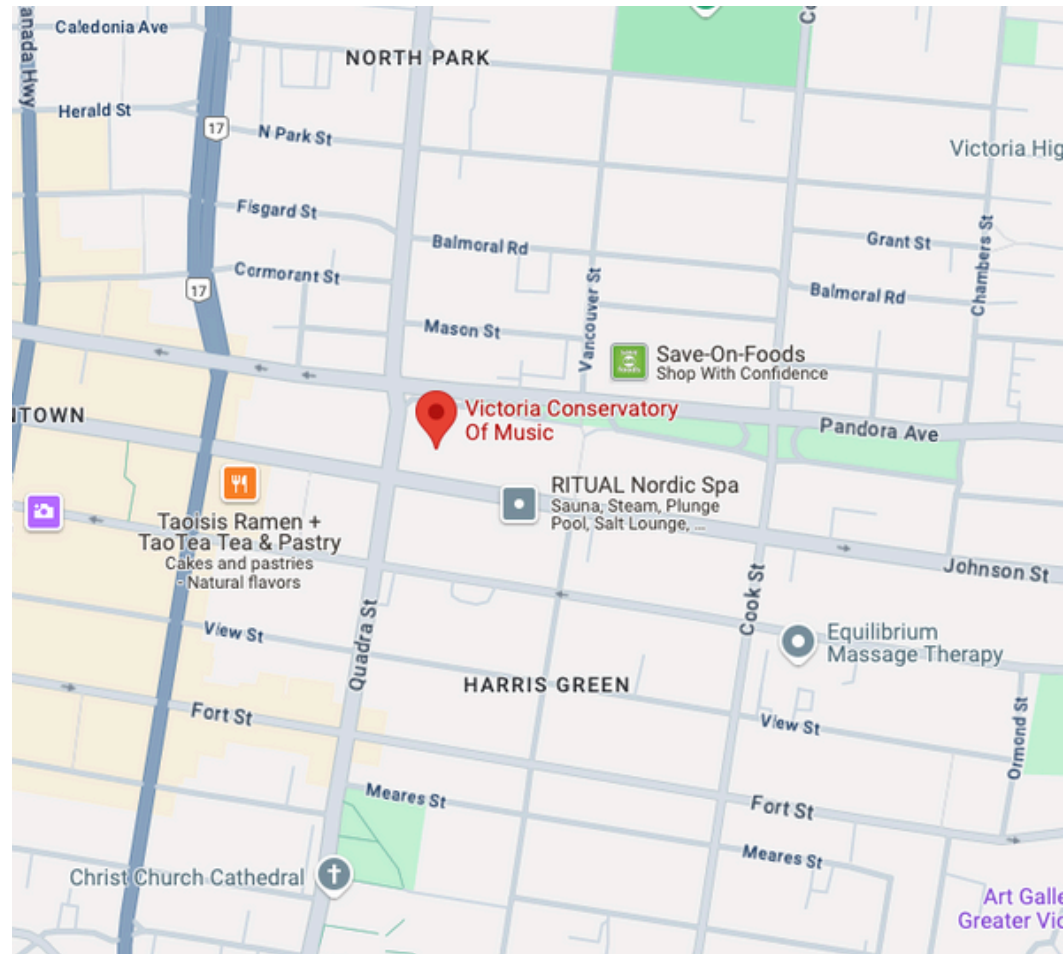
About

The Robin and Winifred Wood Recital Hall, formerly the Spencer Chapel, provides space for small-scale music performances, solo recitals, lectures and rehearsals. It seats up to 90 people.

Location

The VCM Wood Hall is located at 900 Johnson St, Victoria, BC V8V 3N4 ləkʷəŋən territory.

Map



[Click here to view the Wood Hall on Google Maps](#)

Performances at VCM Wood Hall 2025

All accessibility material is available from Front-of-House Staff at the venue and at VictoriaFringe.com

Juicy Woo-Woo!

SOBOLTALK

Thursday, August 21st 7:45PM
Friday, August 22nd 6:00PM
Saturday, August 23rd 3:15PM
Sunday, August 24th 2:00PM
Tuesday, August 26th 8:00PM

SEX GODDESS

R&R Productions

Saturday, August 23rd 7:45PM
Sunday, August 24th 6:30PM
Thursday, August 28th 9:30PM
Saturday, August 30th 2:00PM
Sunday, August 31st 12:00PM

Shade Apparel

Imbroglia Theatre

Thursday, August 21st 6:00PM
Saturday, August 23rd 6:00PM
Sunday, August 24th 4:45PM
Friday, August 29th 7:15PM
Saturday, August 30th 4:45PM

The Magical World of Ventriloquism- One Man's Journey

Dave Dixon

Friday, August 22nd 8:00PM
Saturday, August 23rd 1:15PM
Sunday, August 24th 12:00PM
Thursday, August 28th 5:30PM
Saturday, August 30th 8:45PM

Beth & Josie EXPOSED

Beth Marshall Presents

Tuesday, August 26th 6:00PM
Wednesday, August 27th 8:00PM
Friday, August 29th 9:15PM
Saturday, August 30th 6:30PM
Sunday, August 31st 2:00PM

The Disney Delusion

Leif Oleson-Cormack

Wednesday, August 27th 6:00PM
Thursday, August 28th 7:15PM
Friday, August 29th 5:30PM
Saturday, August 30th 12:00PM
Sunday, August 31st 4:15PM

Tickets and Fringe Buttons

All tickets are online and in advance at www.VictoriaFringe.com. You will receive an email with a QR code that has ALL your purchased tickets for the Fringe (this QR code will update if you purchase more tickets later).

Once you've lined up, a Fringe line concierge will come and check you are in line for the correct show and that you have your Fringe button.

If you purchased your Fringe button online, you can show proof of purchase and the volunteer will give you a button. If you have not purchased a button, you will be able to do so at the venue without losing your spot in line.

Your ticket will be scanned by a volunteer when the doors to the venue open.



Fringe Button

The “Fringe On The House” Program

Free tickets are available to all companions to patrons who identify as a part of the d/Disability community. Just call our box office at 250-383-2663 and ask for a companion ticket when booking.

We are also offering the ‘Fringe on the House’ program this year. If for any reason the cost of a ticket is beyond your means, we have a select number of tickets per show available for free, no questions asked. Just call our box office at 250-383-2663 to book.

Fringe on the House tickets are limited to one ticket per person, per show, up to a maximum of 5 shows.

All tickets need to be booked in advance. To guarantee a Fringe on the House or companion ticket, tickets must be booked before 3pm for weekday shows, and 12pm for weekend shows.

There are two ways to book these tickets:

1. In person. The in person box office is located at 2-1609 Blanshard Street.
 - a. Box Office is open 12pm-5:30pm, Monday to Friday starting August 1st, and then everyday from Monday, August 18th to Sunday, August 31st from 12-5pm. Parker and other festival staff members will be there to offer support.
2. By phone. If you prefer, you can call the box office at 250-383-2663 during the above Box Office hours.

Parking



There is no designated parking for the VCM Wood Hall.

There is street parking along Johnson Street as it runs down both sides of Quadra St, which is free after 6pm. There is also a paid parking lot on the opposite corner of Quadra & Johnson (kitty corner).

The nearest parkade is the Johnson St. Parkade (entrance at 750 Johnson St.).

There is a limited amount of availability for accessible parking at VCM using a parking pass, please contact us ahead of time or speak to our Front of House Manager to arrange its use.



Transit



The BC transit bus routes that run near the Wood Hall are:

#6 along Quadra St.

#2, 24, 25, 27, 28 along Johnson St. (Johnson is a one-way street going away from downtown. In the opposite direction, these routes run on Yates or Pandora.)

Many other routes also stop within walking distance of the Metro along Pandora, Yates, Fort and Douglas Streets.

[Click this link](#) to see nearby bus stops and their accompanying routes.

[Click this link](#) for the BC Transit website, complete with schedules, routes, and image descriptions.

Cycling



There are protected bike lanes along Pandora Ave., one block North from the Wood Hall. It can be busy to bike along Quadra St., and there is no bike lane, but sidewalks are always available, though not recommended for high-speed.

[Click this link](#) to find your safest cycling route to the Wood Hall from your location.

There is a bike rack inside the gates of the Victoria Conservatory of Music, but the gates are locked at 8pm daily. All bikes must be removed after the show.

When You Arrive

The entrance to Wood Hall is on Johnson street, at the black gates.

You will see a Fringe tent in front of the Victoria Conservatory of Music building.

Audiences will line up along the right side of the walkway, in front of the benches, where a Fringe volunteer will come to greet you.

Please bring your confirmation email (on a phone or printed) to the show for entry.

If you forget your confirmation email, we can look your tickets up by last name.



Priority Seating

Seats may be reserved for accessibility needs if we have been notified in advance. You can do so by leaving a note when you purchase tickets, or contacting our box office at tickets@intrepidtheatre.com

We recommend arriving 25 minutes early if you need an accessible seat so our Front of House Manager can support you.

Communicable Disease Prevention Plan

Intrepid Theatre has a Communicable Disease Prevention Plan in place, and can be read in full at intrepidtheatre.com/about/policies

Masks are not required, however, we support the wearing of masks by audiences, artists, and volunteers while indoors if they wish to do so. Masks and hand sanitizer are available with Front of House.

Arriving at the theatre will be considered a declaration of good health. If you are feeling unwell, we recommend you stay home and contact tickets@intrepidtheatre.com in advance of the performance. We cannot issue refunds following a performance.

The Lobby

There is no lobby for this venue, after lining up by the box office tent you will be directed through the courtyard and into the space by staff or volunteers.

There is always a Front of House Manager at Fringe shows. They are a staff member who supervises the audience areas. Their job is to help the audience, and they'll usually be nearby when you arrive.

If you need help or have any questions, you can ask the Front of House Manager or volunteers.



Front of House Staff & Volunteers

In the Box Office, you will meet Evelyn Gray (they/them), the front of house manager, and Fringe volunteers, who are responsible for showing you to the theatre and answering any questions you have.

Volunteers can be spotted by looking for purple t-shirts and friendly faces!



Entering the Theatre

A volunteer will help guide you to the theatre. Once you pass through the automatic doors, you will see a courtyard.

On the right is a ramp and on the left are four steps up to the entrance to the theatre.

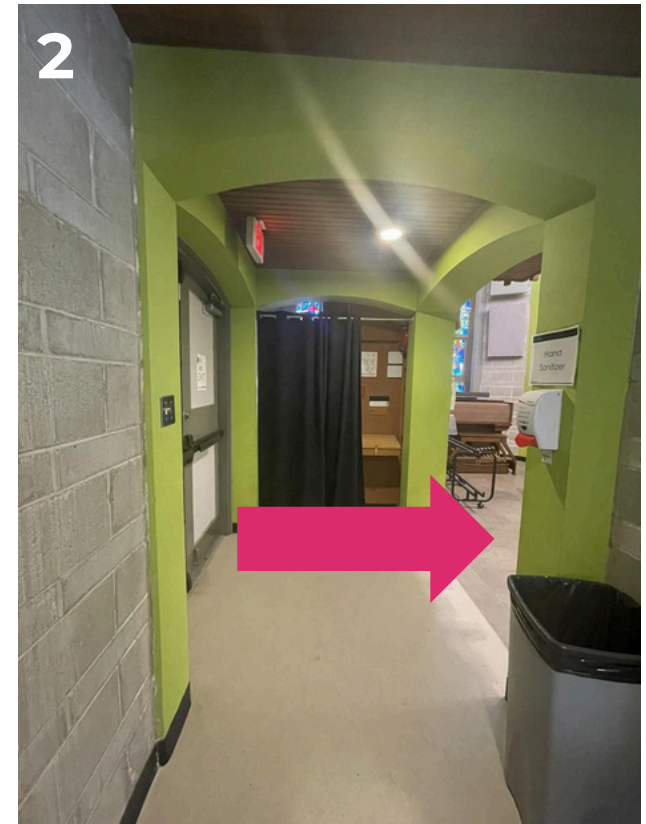


Entering the Theatre (con't)

The entrance to the theatre is through 2 double doors which will be open.

There is then one single door directly to the left with a small lip leading into a green hallway.

At the end of the green hallway on the right is the entrance to the theatre space.



Exiting the Theatre

You can exit the theatre through the same doors you came through.

The front-of-house Manager and/or a Fringe volunteer will be able to direct you out of the building in the case of emergency.



Exiting the Theatre (con't)

There are two emergency exits.

One door is to the left of the stage, once outside walk to the left along the fence and a security officer will be there to unlock and guide people through the gate.

The other door is at the back of the theatre, behind the audience in the hallway you enter through. Outside the door is the courtyard, to the right is a gate to exit through and to the left is the entrance you arrived through.



The Stage

There are 2 sections of seating- on either side with a centre aisle.

The stage may look different depending on the show, however there will be black curtains and lights hanging.

For seating for audiences using mobility devices, chairs will be removed in the first row.

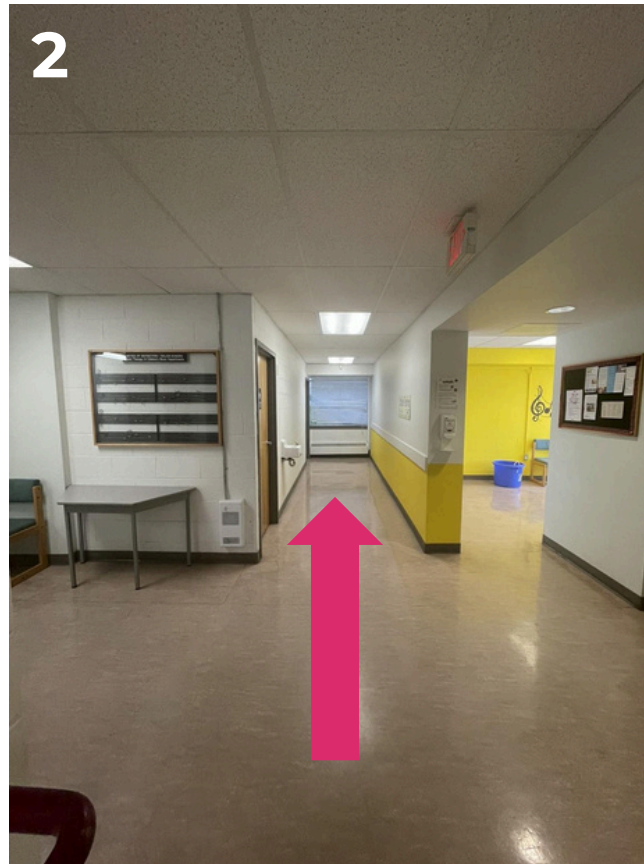
Unless specified otherwise, the show will take place entirely in front of the audience.

There may be set pieces, props, technical equipment, or even performers onstage prior to the show.



Accessible Washrooms

The accessible washrooms are located back in the lobby, down a ramp on the right-hand side as you enter from the street. One is large enough to be wheelchair accessible, and the other is only ground floor.



Accessible Washrooms (con't)

Both washrooms have grab bars and single toilets. The smaller bathroom (right) also has a changing table.

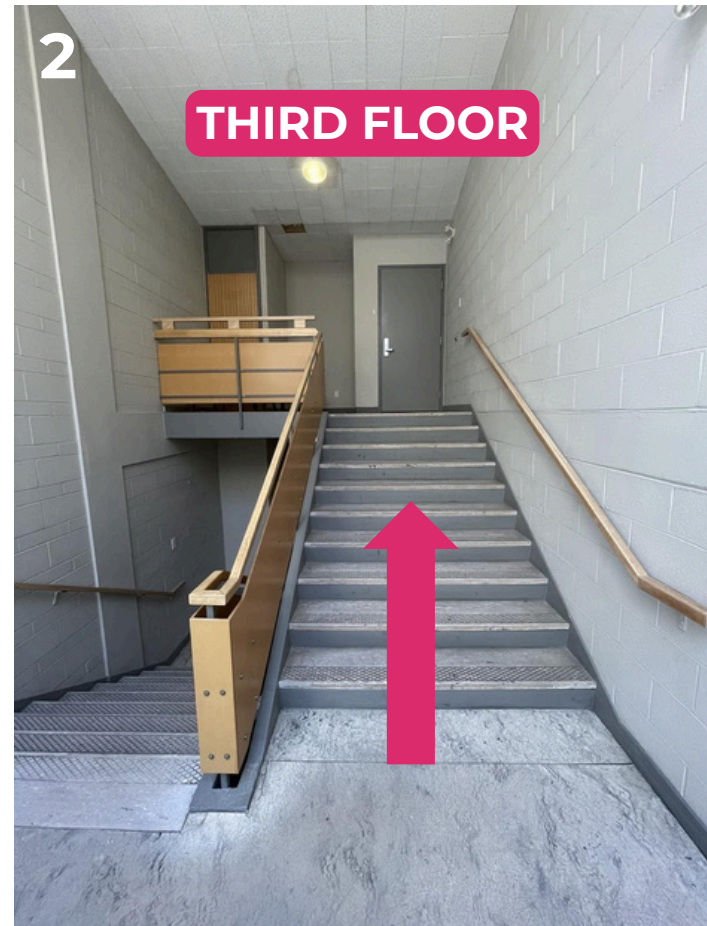


Non-Accessible Washrooms

When you approach the theatre entrance, there are two flights of stairs leading upstairs to the 3rd floor.

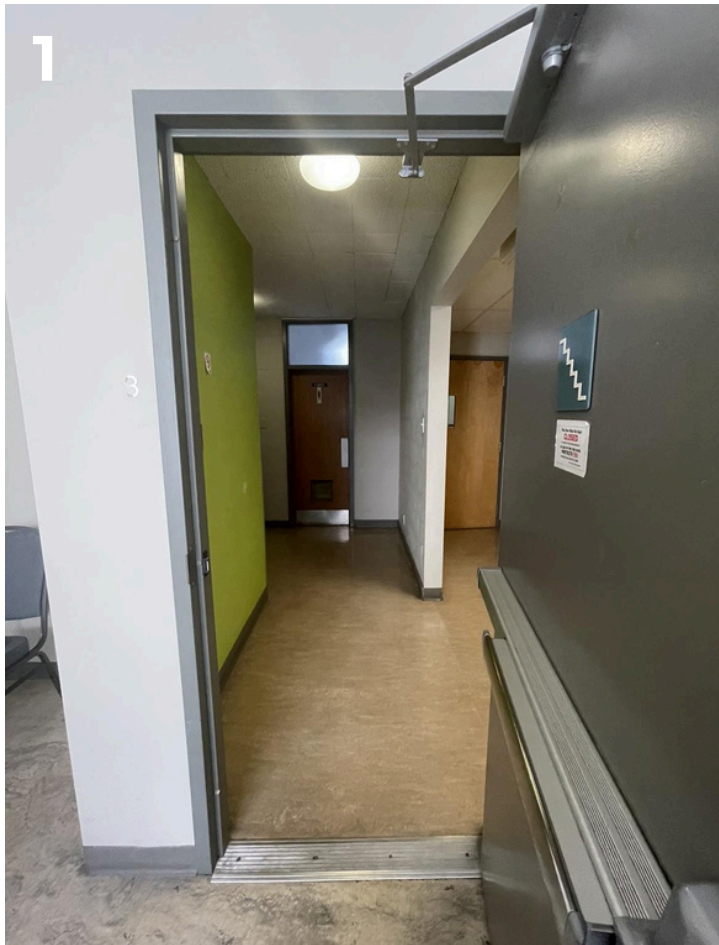
On the left side of the 3rd floor are the two washrooms.

Washrooms are all genders for Fringe.



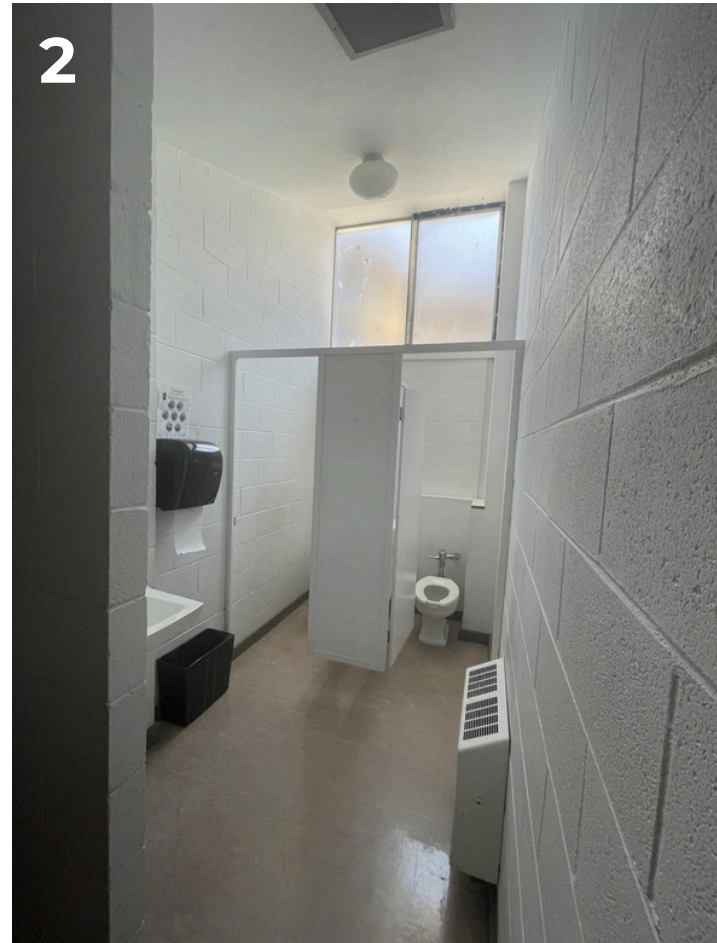
Non-Accessible Washrooms (con't)

A small wall divides the bathrooms from the rest of the floor, where music classes often take place. Washrooms are gendered, yet trans-inclusive. Signage will reflect this on the day.



Non-Accessible Washrooms (con't)

Both washrooms have two stalls and two individual toilets. Neither washrooms have any urinals.



During the Show

At the show start time, a Fringe staff member will talk for a few minutes to welcome the audience (called the front of house speech) and give some information about the show. They will mention any and all elements of the show that audience members could be sensitive to, like haze, strobe lighting, loud noises, etc. and any content warnings about material in the show that could be triggering or upsetting.

We try to start all shows on time. Some shows may allow latecomers, some may allow audiences to come and go throughout the show, and some may not admit latecomers at all—it varies from show to show. See individual show details at intrepidtheatre.com/shows.

During the show, the performers will usually be on the stage, but may be in the audience area too. Any interaction with audience members will be prefaced in the front of house speech, and performers will seek consent before any interaction takes place.

At the end of the show, the performers will bow while the audience claps. Some patrons choose to wave their hands in the air should they not want to clap due to noise, and some choose to cover their ears if needed.

After the Show

People sometimes thank the artist or ask them questions afterward. The artist will let audiences know if they want to chat outside the theatre or inside depending on how much they have to pack up. They might share further info about their show or how to get in touch with them in the future.

Artists also sometimes have merchandise for sale on the stage.

When the show is over, you will exit the theatre into the lobby through the same doors you came through. The aisles may be busy while everyone is leaving their seats. From the lobby, exit through the main front doors (push to open), and you'll be back on Johnson Street.

We hope you enjoy your visit!

If you have attended a show at this venue and have further suggestions to include or correct in this guide, please contact Emmett at

emmett@intrepidtheatre.com

We are committed to continuously improving our accessibility resources and appreciate your help.